

The Museum of Modern Art

The Original Copy: Photography of Sculpture, 1839 to Today

The Museum of Modern Art, New York August 01, 2010-November 01, 2010

6th Floor, Special Exhibitions, North

Kunsthhaus Zürich February 25, 2011-May 15, 2011

Sculpture in the Age of Photography

1.



WILLIAM HENRY FOX TALBOT (British, 1800-1877)

Bust of Patroclus

Before February 7, 1846

Salt print from a calotype negative

7 x 6 5/16" on 8 7/8 x 7 5/16" paper (17.8 x 16 cm on 22.5 x 18.6 cm paper)

The J. Paul Getty Museum, Los Angeles, California, 84.XP.921.2

2.



ADOLPHE BILORDEAUX (French, 1807-1875)

Plaster Hand

1864

Albumen silver print

12 1/16 x 9 3/8" (30.7 x 23.8 cm)

Bibliothèque nationale de France, Paris

3.



LORRAINE O'GRADY (American, born 1934)

Sister IV, L: Devonia's Sister, Lorraine; R: Nefertiti's Sister, Mutnedjmet from Miscegenated Family Album

1980/94

Silver dye bleach print

26 x 37" (66 x 94 cm)

Courtesy the artist and Alexander Gray Associates, New York

4.



CHARLES NÈGRE (French, 1820-1880)

The Mystery of Death, Medallion by Auguste Préault

November 1858

Photogravure

10 1/2 x 10 1/2" (26.6 x 26.7 cm)

National Gallery of Canada, Ottawa

Purchased 1968

5.



KEN DOMON (Japanese, 1909-1990)

Right Hand of the Sitting Image of Buddha Shakyamuni in the Hall of Miroku, Muro-Ji, Nara

1942-43

Gelatin silver print

12 7/8 x 9 1/2" (32.7 x 24.2 cm)

The Museum of Modern Art, New York. Gift of the photographer

6.



KEN DOMON (Japanese, 1909-1990)

Left Hand of the Sitting Image of Buddha Shakyamuni in the Hall of Miroku, Muro-Ji, Nara

1942-43

Gelatin silver print

12 7/8 x 9 1/2" (32.7 x 24.2 cm)

The Museum of Modern Art, New York. Gift of the photographer

7.



ANN HAMILTON (American, born 1956)

phora 8

2005

Inkjet print

33 3/4 x 46 1/4" (85.7 x 117.5 cm)

The Museum of Modern Art, New York. Acquired through the generosity of Stephen Abramson

8.



CLARENCE KENNEDY (American, 1892-1972)

Plate I from *The Tomb by Antonio Rossellino for the Cardinal of Portugal*

1933

Gelatin silver print

10 x 6 1/2" (25.4 x 16.5 cm)

The Museum of Modern Art, New York. Gift of Melinda Norris Kennedy in memory of her father, Clarence Kennedy

9.



CLARENCE KENNEDY (American, 1892-1972)

Plate XXXI from *The Tomb by Antonio Rossellino for the Cardinal of Portugal*

1933

Gelatin silver print

6 1/2 x 10 1/4" (16.5 x 26.1 cm)

The Museum of Modern Art, New York. Gift of Melinda Norris Kennedy in memory of her father, Clarence Kennedy

10.



CLARENCE KENNEDY (American, 1892-1972)

Plate XVIII from *The Tomb by Antonio Rosselino for the Cardinal of Portugal*
1933

Gelatin silver print

9 3/4 x 6 1/2" (24.8 x 16.5 cm)

The Museum of Modern Art, New York. Gift of Melinda Norris Kennedy in memory of her father, Clarence Kennedy

11.



CLARENCE KENNEDY (American, 1892-1972)

Plate XXV from *The Tomb by Antonio Rosselino for the Cardinal of Portugal*
1933

Gelatin silver print

11 x 8 1/2" (28.0 x 21.5 cm)

The Museum of Modern Art, New York. Gift of Melinda Norris Kennedy in memory of her father, Clarence Kennedy

12.



CLARENCE KENNEDY (American, 1892-1972)

Plate XXII from *The Tomb by Antonio Rosselino for the Cardinal of Portugal*
1933

Gelatin silver print

10 x 6 1/2" (25.4 x 16.5 cm)

The Museum of Modern Art, New York. Gift of Melinda Norris Kennedy in memory of her father, Clarence Kennedy

13.



CLARENCE KENNEDY (American, 1892-1972)

Plate XX from *The Tomb by Antonio Rosselino for the Cardinal of Portugal*
1933

Gelatin silver print

6 1/2 x 10 1/2" (16.5 x 26.7 cm)

The Museum of Modern Art, New York. Gift of Melinda Norris Kennedy in memory of her father, Clarence Kennedy

14.



MAXIME DU CAMP (French, 1822-1894)

Westernmost Colossus of the Temple of Re, Abu Simbel

1849-51

Salted paper print from a paper negative

8 15/16 x 6 1/2" (22.6 x 16.6 cm)

The Museum of Modern Art, New York. Gift of Warner Communications, Inc.

15.



ADAM CLARK VROMAN (American, 1856-1916)
Pueblo of Zuni (Sacred Shrine of Taayallona)
1899
Platinum print
6 x 8" (15.3 x 20.3 cm)
The Museum of Modern Art, New York. Exchange

16.



CHARLES NÈGRE (French, 1820-1880)
Angel of the Resurrection on the Roof of Notre Dame
1853
Salted paper print from a paper negative
12 13/16 x 9 1/8" (32.6 x 23.2 cm), mounted on a 23 11/16 x 18 1/4" (60.2 x 46.4 cm)
card
Collection Laure Sudreau-Rippe

17.



WILLIAM JAMES STILLMAN (American, 1828-1901)
Figure of Victory
1869
Autotype
9 7/16 x 7 3/16" (24.0 x 18.2 cm)
The Museum of Modern Art, New York. Gift of Miss Frances Stillman

18.



THÉODULE DEVÉRIA (French, 1831-1872)
Greek Serapeum, Memphis
1859
Albumen silver print from paper negative
8 1/4 x 11 7/16" (21 x 29 cm)
Thomas Walther Collection

19.



STEPHEN THOMPSON (British)
Satyr, British Museum
1869-1872
Albumen silver print from glass negative
11 x 8 9/16" (28 x 21.8 cm)
The Metropolitan Museum of Art, Gilman Collection, Purchase, The Horace W. Goldsmith Foundation Gift, through Joyce and Robert Menschel, 2005 (2005.100.510)

20.



ROGER FENTON (British, 1819-1869)
The Third Graeco-Roman Saloon on Artists' Day
 c. 1857
 Albumen print
 10 5/16 x 11 9/16" (26.2 x 29.3 cm)
 The Royal Photographic Society Collection at the National Media Museum, Bradford.
 Purchased with the assistance of The Art Fund

21.



LOUISE LAWLER (American, born 1947)
Unsentimental
 1999-2000
 Silver dye bleach print
 47 1/2 x 57" (120.6 x 144.8 cm)
 Collection Pamela and Arthur Sanders

22.



ELLIOTT ERWITT (American, born France 1928)
Metropolitan Museum of Art, New York
 1949
 Gelatin silver print, printed 1954
 13 3/8 x 10 1/4" (33.9 x 26.0 cm)
 The Museum of Modern Art, New York. Gift of the photographer

23.



LARRY FINK (American, born 1941)
The Metropolitan Museum of Art, New York, Costume Ball
 December 1995
 Gelatin silver print
 14 1/4 x 14 1/4" (36.2 x 36.2 cm)
 Collection the artist

24.



ANDRÉ KERTÉSZ (American, born Hungary. 1894-1985)
Thomas Jefferson
 1961
 Gelatin silver print
 12 5/8 x 16 5/8" (32.2 x 42.1 cm)
 The Museum of Modern Art, New York. Gift of the photographer

25.



FRANCES BENJAMIN JOHNSTON (American, 1864-1952)

Eastern High School, Washington, D.C.

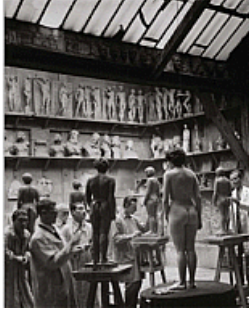
c. 1899

Cyanotype

8 15/16 x 11 5/16" (22.7 x 28.7 cm)

Frances Benjamin Johnston Collection, Prints & Photographs Division, Library of Congress, Washington D.C.

26.



BRASSAÏ (GYULA HALÁSZ) (French, born Transylvania. 1899-1984)

At the Académie Julian

1932

Gelatin silver print

9 1/4 x 7 1/4" (23.5 x 18.4 cm)

Collection Daile Kaplan and Donna Henes, New York

27.



FRANÇOIS-ALPHONSE FORTIER (French, 1825-1882)

Still Life

1839-1840

Daguerreotype

6 5/16 x 8 3/8" (16 x 21.3 cm)

Société française de photographie, Paris

28.



ALPHONSE EUGÈNE HUBERT (French, 1798-1842)

Still Life with the Venus de Milo

1839

Daguerreotype

6 5/16 x 8 1/4" (16 x 21 cm)

Société française de photographie, Paris

29.



BARBARA KRUGER (American, born 1945)

Untitled (Your Gaze Hits the Side of My Face)

1981

Gelatin silver print

66 x 48" (167.6 x 121.9 cm)

The Steven and Alexandra Cohen Collection

30.



CINDY SHERMAN (American, born 1954)

Untitled Film Still #50

1979

Gelatin silver print

6 9/16 x 9 7/16" (16.7 x 24 cm)

The Museum of Modern Art, New York. Horace W. Goldsmith Fund through Robert B. Menschel

31.



AN-MY LÊ (American, born Vietnam 1960)

Milani Workshop, Vicenza, Italy

1991

Gelatin silver print

28 x 22 3/8" (71.1 x 56.9 cm)

Collection the artist

32.



JAN DE COCK (Belgian, born 1976)

Studio Repromotion 1563

2009

Chromogenic color print

5 15/16 x 4" (15.1 x 10.1 cm)

Collection the artist

33.



JAN DE COCK (Belgian, born 1976)

Studio Repromotion 1659

2009

Chromogenic color print

5 15/16 x 4" (15.1 x 10.1 cm)

Collection the artist

34.



ANDRÉ KERTÉSZ (American, born Hungary. 1894-1985)

African Sculptures

1927

Gelatin silver print

3 1/4 by 3 3/8" (8.3 by 8.6 cm)

Collection Brent R. Harris

35.



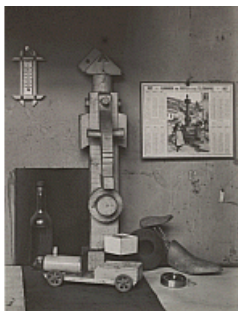
ANDRÉ KERTÉSZ (American, born Hungary. 1894-1985)
"Woman 25,000 Years Ago" in *Vu Journal de la Semaine* no. 15
June 27, 1928
Journal
14 9/16 x 10 13/16" (37 x 27.4 cm)
Collection Jindrich Toman

36.



ANDRÉ KERTÉSZ (American, born Hungary. 1894-1985)
At Zadkine's
1926
Gelatin silver print
4 1/8 x 2 5/8" (10.5 x 6.7 cm)
The Museum of Modern Art, New York. Thomas Walther Collection. Purchase

37.



ANDRÉ KERTÉSZ (American, born Hungary. 1894-1985)
Léger Studio
1927
Gelatin silver print
4 1/8 x 3 1/8" (10.4 x 7.9 cm)
The Museum of Modern Art, New York. Thomas Walther Collection. Gift of Thomas Walther

Eugène Atget: The Marvelous in the Everyday

38.



EUGÈNE ATGET (French, 1857-1927)

Heurtoir, 43 rue Sainte-Anne

1904-05

Albumen silver print

8 7/16 x 7 1/16" (21.5 x 18 cm)

The Museum of Modern Art, New York. Abbott-Levy Collection. Partial gift of Shirley C. Burden

39.



EUGÈNE ATGET (French, 1857-1927)

Door knocker, 120 rue du Faubourg Saint-Honoré

1901

Albumen silver print

8 11/16 x 7 1/16" (22 x 18 cm)

The Museum of Modern Art, New York. Abbott-Levy Collection. Partial gift of Shirley C. Burden

40.



EUGÈNE ATGET (French, 1857-1927)

Door knocker, 43 rue Sainte-Anne

1909

Albumen silver print

8 11/16 x 7 1/16" (22 x 18 cm)

The Museum of Modern Art, New York. Abbott-Levy Collection. Partial gift of Shirley C. Burden

41.



EUGÈNE ATGET (French, 1857-1927)

Versailles, Vase

1906

Albumen silver print

8 3/8 x 7" (21.3 x 17.8 cm)

The Museum of Modern Art, New York. Abbott-Levy Collection. Partial gift of Shirley C. Burden

42.



EUGÈNE ATGET (French, 1857-1927)






Versailles, Vase

1906

Albumen silver print

8 5/8 x 7" (21.9 x 17.8 cm)

The Museum of Modern Art, New York. Abbott-Levy Collection. Partial gift of Shirley C. Burden

43.  EUGÈNE ATGET (French, 1857-1927)
Versailles, Vase
1906
Albumen silver print
8 1/2 x 7" (21.6 x 17.8 cm)
The Museum of Modern Art, New York. Abbott-Levy Collection. Partial gift of Shirley C. Burden
44.  EUGÈNE ATGET (French, 1857-1927)
Cluny—12th century
1921
Albumen silver print
8 7/16 x 7 3/16" (21.4 x 18.2 cm)
The Museum of Modern Art, New York. Abbott-Levy Collection. Partial gift of Shirley C. Burden
45.  EUGÈNE ATGET (French, 1857-1927)
Cluny—Door
1902
Albumen silver print
8 11/16 x 7 1/16" (22 x 18 cm)
The Museum of Modern Art, New York. Abbott-Levy Collection. Partial gift of Shirley C. Burden
46.  EUGÈNE ATGET (French, 1857-1927)
Cluny—Neptune, 18th Century Spanish Art
1911
Albumen silver print
8 11/16 x 7 1/16" (22 x 18 cm)
The Museum of Modern Art, New York. Abbott-Levy Collection. Partial gift of Shirley C. Burden
47.  EUGÈNE ATGET (French, 1857-1927)
Versailles—Hercules and Telephus by Jean-Baptiste Jouvenet
1923-24
Matte albumen silver print
8 3/4 x 7 1/16" (22.3 x 17.9 cm)
The Museum of Modern Art, New York. Abbott-Levy Collection. Partial gift of Shirley C. Burden

48.



EUGÈNE ATGET (French, 1857-1927)

Versailles—Deceit by Louis Le Conte

1923-24

Matte albumen silver print

8 13/16 x 6 15/16" (22.4 x 17.7 cm)

The Museum of Modern Art, New York. Abbott-Levy Collection. Partial gift of Shirley C. Burden

49.



EUGÈNE ATGET (French, 1857-1927)

Versailles—Deceit by Louis Le Conte

1923-24

Matte albumen silver print

8 7/8 x 7 1/16" (22.5 x 18 cm)

The Museum of Modern Art, New York. Abbott-Levy Collection. Partial gift of Shirley C. Burden

50.



EUGÈNE ATGET (French, 1857-1927)

Versailles—Callipygian Venus by Jean-Jacques Clérion

1922-23

Albumen silver print

8 1/4 x 6 3/4" (21 x 17.1 cm)

The Museum of Modern Art, New York. Given anonymously

51.



EUGÈNE ATGET (French, 1857-1927)

Versailles—The Phlegmatic by Matthieu Lespagnandelle

1923-24

Albumen silver print

8 1/2 x 7 1/8" (21.6 x 18.1 cm)

The Museum of Modern Art, New York. Abbott-Levy Collection. Partial gift of Shirley C. Burden

52.



EUGÈNE ATGET (French, 1857-1927)

Versailles—Satirical Poetry by Philippe de Buyster

1923-24

Albumen silver print

8 11/16 x 7 3/16" (22 x 18.3 cm)

The Museum of Modern Art, New York. Abbott-Levy Collection. Partial gift of Shirley C. Burden

53.



EUGÈNE ATGET (French, 1857-1927)
Versailles—Autumn by Thomas Regnaudin
1923-24
Albumen silver print
8 9/16 x 7 1/8" (21.7 x 18.1 cm)

The Museum of Modern Art, New York. Abbott-Levy Collection. Partial gift of Shirley C. Burden

54.



EUGÈNE ATGET (French, 1857-1927)
Versailles—Europe by Pierre Mazeline
1923-24
Albumen silver print
8 9/16 x 7 1/16" (21.8 x 18 cm)

The Museum of Modern Art, New York. Abbott-Levy Collection. Partial gift of Shirley C. Burden

55.



EUGÈNE ATGET (French, 1857-1927)
Versailles—Melancholy by Michel de la Perdix
1923-24
Albumen silver print
8 11/16 x 7 1/16" (22 x 18 cm)

The Museum of Modern Art, New York. Abbott-Levy Collection. Partial gift of Shirley C. Burden

56.



EUGÈNE ATGET (French, 1857-1927)
Saint-Cloud
1922
Albumen silver print
6 15/16 x 8 9/16" (17.6 x 21.7 cm)






The Museum of Modern Art, New York. Abbott-Levy Collection. Partial gift of Shirley C. Burden

57.



EUGÈNE ATGET (French, 1857-1927)
Saint-Cloud
Morning, 7:00, July 1921
Albumen silver print
6 15/16 x 8 3/8" (17.7 x 21.2 cm)

The Museum of Modern Art, New York. Abbott-Levy Collection. Partial gift of Shirley C. Burden

58.  EUGÈNE ATGET (French, 1857-1927)
Saint-Cloud
Evening, 7:00, 1921
Albumen silver print
6 15/16 x 8 11/16" (17.6 x 22 cm)
The Museum of Modern Art, New York. Abbott-Levy Collection. Partial gift of Shirley C. Burden
59.  EUGÈNE ATGET (French, 1857-1927)
Saint-Cloud
1904
Matte albumen silver print
6 3/4 x 9" (17.1 x 22.9 cm)
The Museum of Modern Art, New York. Given anonymously
60.  EUGÈNE ATGET (French, 1857-1927)
Saint-Cloud
1922
Gelatin silver printing-out-paper print
6 7/8 x 8 5/8" (17.5 x 21.9 cm)
The Museum of Modern Art, New York. Given anonymously
61.  EUGÈNE ATGET (French, 1857-1927)
Saint-Cloud
1915-19
Gelatin silver printing-out-paper print
7 x 9 1/16" (17.8 x 23 cm)
The Museum of Modern Art, New York. Abbott-Levy Collection. Partial gift of Shirley C. Burden
62.  EUGÈNE ATGET (French, 1857-1927)
Parc de Sceaux
Morning, 8:00, 1925
Gelatin silver printing-out-paper print
7 1/16 x 8 13/16" (17.9 x 22.4 cm)
The Museum of Modern Art, New York. Abbott-Levy Collection. Partial gift of Shirley C. Burden

63.



EUGÈNE ATGET (French, 1857-1927)

Parc de Sceaux

June 1925

Gelatin silver printing-out-paper print

7 1/16 x 8 7/8" (18 x 22.5 cm)

The Museum of Modern Art, New York. Abbott-Levy Collection. Partial gift of Shirley C. Burden

64.



EUGÈNE ATGET (French, 1857-1927)

Saint-Cloud

1923

Albumen silver print

8 7/16 x 7 1/16" (21.5 x 18 cm)

The Museum of Modern Art, New York. Abbott-Levy Collection. Partial gift of Shirley C. Burden

65.



EUGÈNE ATGET (French, 1857-1927)

Saint-Cloud

1923

Albumen silver print

7 3/16 x 8 11/16" (18.2 x 22 cm)

The Museum of Modern Art, New York. Abbott-Levy Collection. Partial gift of Shirley C. Burden

66.



EUGÈNE ATGET (French, 1857-1927)

Saint-Cloud

1923

Albumen silver print

6 7/8 x 8 3/8" (17.5 x 21.3 cm)

The Museum of Modern Art, New York. Given anonymously

Auguste Rodin: The Sculptor and the Photographic Enterprise

67.



EUGÈNE DRUET (French, 1868-1917)
The Kiss at the Salon of the Société Nationale des Beaux Arts
1898
Gelatin silver print
15 9/16 x 11 3/4" (39.6 x 29.9 cm)
Musée Rodin. Donation Auguste Rodin, 1916
Ph. 3412

68.



JACQUES-ERNEST BULLOZ (French, 1858-1942)
The Kiss
c. 1904
Carbon print
13 7/8 x 10 5/16" (35.2 x 26.2 cm)
Musée Rodin. Donation Auguste Rodin, 1916
Ph. 3465

69.



EUGÈNE DRUET (French, 1868-1917)
The Kiss in Marble in the Studio
c. 1898
Gelatin silver print
15 3/4 x 11 5/8" (40 x 29.6 cm)
Musée Rodin. Donation Auguste Rodin, 1916
Ph. 3402

70.



EUGÈNE DRUET (French, 1868-1917)
The Kiss in Marble in the Studio at the Dépôt des marbres
c. 1898
Gelatin silver print
15 11/16 x 11 11/16" (39.8 x 29.7 cm)
Musée Rodin. Donation Auguste Rodin, 1916
Ph. 374

71.



EUGÈNE DRUET (French, 1868-1917)
Eve in the Studio at the Dépôt des Marbres
c. 1898
Gelatin silver print
15 3/4 x 11 13/16" (40 x 30 cm)
Musée Rodin. Donation Auguste Rodin, 1916
Ph. 2417

72.



EUGÈNE DRUET (French, 1868-1917)
Eve in Marble in the Studio
c. 1898
Gelatin silver print
15 3/4 x 11 13/16" (40 x 30 cm)
Musée Rodin. Donation Auguste Rodin, 1916
Ph. 2825

73.



EDWARD STEICHEN (American, born Luxembourg. 1879-1973)
Balzac, The Silhouette—4 A.M.
1908
Gum bichromate print
14 15/16 x 18 1/8" (37.9 x 46 cm)
The Metropolitan Museum of Art, Alfred Stieglitz Collection, 1933 (33.43.36)

74.



EDWARD STEICHEN (American, born Luxembourg. 1879-1973)
Balzac, the Open Sky—11:00 P.M.
1908, printed 1909
Direct carbon print
19 3/16 x 15 3/16" (48.7 x 38.5 cm)
The Metropolitan Museum of Art, Alfred Stieglitz Collection, 1933 (33.43.46)

75.



EDWARD STEICHEN (American, born Luxembourg. 1879-1973)
Balzac, Towards the Light, Midnight
1908
Direct carbon print
14 3/8 x 19" (36.5 x 48.2 cm)
The Metropolitan Museum of Art, Alfred Stieglitz Collection, 1933 (33.43.38)

76.



EUGÈNE DRUET (French, 1868-1917)
Clenched Hand Emerging from a Blanket
c. 1898
Gelatin silver print
15 5/8 x 11 13/16" (39.7 x 30 cm)
Musée Rodin. Donation Auguste Rodin, 1916
Ph. 1322

77.



EUGÈNE DRUET (French, 1868-1917)

Despair

c. 1898

Gelatin silver print

13 7/16 x 9 5/8" (34.2 x 24.5 cm)

Musée Rodin. Donation Auguste Rodin, 1916

Ph. 1339

78.



EUGÈNE DRUET (French, 1868-1917)

Clenched Hand Emerging from the Folds of a Blanket

c. 1898

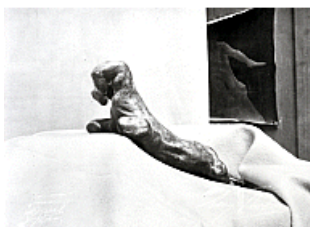
Gelatin silver print

15 3/4 x 11 13/16" (40 x 30 cm)

Musée Rodin. Donation Auguste Rodin, 1916

Ph. 334

79.



EUGÈNE DRUET (French, 1868-1917)

The Clenched Hand

Before 1898

Gelatin silver print

11 3/4 x 15 9/16" (29.9 x 39.5 cm)

The Metropolitan Museum of Art, Gilman Collection, Purchase, Mr. and Mrs. Henry R. Kravis Gift, 2005 (2005.100.115)

80.



EDWARD STEICHEN (American, born Luxembourg. 1879-1973)

Rodin—The Thinker

1902

Gum bichromate print

15 9/16 x 19" (39.6 x 48.3 cm)

The Metropolitan Museum of Art, Gilman Collection, Purchase, Harriette and Noel Levine Gift, 2005 (2005.100.289)

Constantin Brancusi: The Studio as Groupe Mobile

81.



CONSTANTIN BRANCUSI (French, born Romania. 1876-1957)
The Artist's Studio with Eve, Plato, and Golden Bird
1922
Gelatin silver print
15 3/4 x 11 1/2" (40 x 29.2 cm)
The Museum of Modern Art, New York. Gift of Elizabeth Lorentz

82.



CONSTANTIN BRANCUSI (French, born Romania. 1876-1957)
Mademoiselle Pogany II
1920
Gelatin silver print
9 1/16 x 6 3/4" (23 x 17.1 cm)
Private collection

83.



CONSTANTIN BRANCUSI (French, born Romania. 1876-1957)
Bird in Space (polished bronze)
c. 1929
Gelatin silver print
15 11/16 x 11 11/16" (39.8 x 29.7 cm)
Centre Pompidou, Musée national d'art moderne - Centre de création industrielle,
Paris. Brancusi bequest, 1957

84.



CONSTANTIN BRANCUSI (French, born Romania. 1876-1957)
View of the Studio: Newborn II (polished bronze)
c. 1929
Gelatin silver print
9 7/16 x 7" (23.9 x 17.8 cm)
Centre Pompidou, Musée national d'art moderne - Centre de création industrielle,
Paris. Brancusi bequest, 1957

85.



CONSTANTIN BRANCUSI (French, born Romania. 1876-1957)
Golden Bird
c. 1919
Gelatin silver print
9 x 6 11/16" (22.8 x 17 cm)
The Museum of Modern Art, New York. Thomas Walther Collection. Purchase

86.



CONSTANTIN BRANCUSI (French, born Romania. 1876-1957)

Bird in Space (white marble)

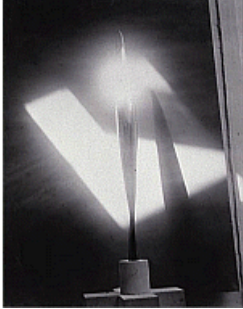
c. 1932

Gelatin silver print

9 7/16 x 7 1/16" (23.9 x 18 cm)

Centre Pompidou, Musée national d'art moderne - Centre de création industrielle, Paris. Brancusi bequest, 1957

87.



CONSTANTIN BRANCUSI (French, born Romania. 1876-1957)

Bird in Space (polished bronze)

c. 1932

Gelatin silver print

10 9/16 x 9 7/16" (26.9 x 23.9 cm)

Centre Pompidou, Musée national d'art moderne - Centre de création industrielle, Paris. Brancusi bequest, 1957

88.



CONSTANTIN BRANCUSI (French, born Romania. 1876-1957)

The Blond Negress Viewed from the Front (polished bronze)

1926

Gelatin silver print

11 1/4 x 7 1/16" (28.6 x 17.9 cm)

Centre Pompidou, Musée national d'art moderne - Centre de création industrielle, Paris. Brancusi bequest, 1957

89.



CONSTANTIN BRANCUSI (French, born Romania. 1876-1957)

Princess X

c. 1930

Gelatin silver print

15 11/16 X 11 5/8" (39.8 x 29.6 cm)

Centre Pompidou, Musée national d'art moderne - Centre de création industrielle, Paris. Brancusi bequest, 1957

90.



CONSTANTIN BRANCUSI (French, born Romania. 1876-1957)
View of the Studio: Mademoiselle Pogany II (veined marble), (polished bronze); The Kiss (pilaster)
 c. 1920
 Gelatin silver print
 9 x 6 11/16" (22.9 x 17 cm)
 Centre Pompidou, Musée national d'art moderne - Centre de création industrielle, Paris. Brancusi bequest, 1957

91.



CONSTANTIN BRANCUSI (French, born Romania. 1876-1957)
View of the Studio: Maiastra, Princess X, an Endless Column, and Sleeping Muse II
 Before December 1917
 Gelatin silver print
 9 7/16 x 7" (23.9 x 17.8 cm)
 Centre Pompidou, Musée national d'art moderne - Centre de création industrielle, Paris. Brancusi bequest, 1957

92.



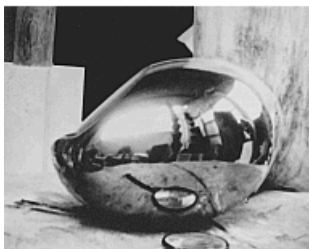
CONSTANTIN BRANCUSI (French, born Romania. 1876-1957)
Head of a Sleeping Child (colored plaster) and Newborn II
 c. 1923
 Gelatin silver print
 7 1/16 x 9 7/16" (18 x 23.9 cm)
 Centre Pompidou, Musée national d'art moderne - Centre de création industrielle, Paris. Brancusi bequest, 1957

93.



CONSTANTIN BRANCUSI (French, born Romania. 1876-1957)
The Beginning of the World
 c. 1920
 Gelatin silver print
 11 3/4 x 9 7/16" (29.8 x 23.9 cm)
 Centre Pompidou, Musée national d'art moderne - Centre de création industrielle, Paris. Brancusi bequest, 1957

94.



CONSTANTIN BRANCUSI (French, born Romania. 1876-1957)
Newborn II (polished bronze)
 c. 1925
 Gelatin silver print
 9 3/8 x 11 13/16" (23.8 x 30 cm)
 Centre Pompidou, Musée national d'art moderne - Centre de création industrielle, Paris. Brancusi bequest, 1957

95.

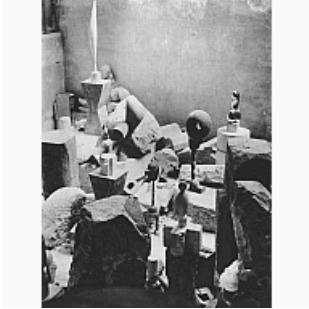


CONSTANTIN BRANCUSI (French, born Romania. 1876-1957)
View of the Back of the Studio: Young Bird, Socrates, Narcissus Fountain, Flying Turtle

c. 1945-46
Gelatin silver print
5 7/8 x 9 7/16" (15 x 23.9 cm)

Centre Pompidou, Musée national d'art moderne - Centre de création industrielle, Paris. Brancusi bequest, 1957

96.



CONSTANTIN BRANCUSI (French, born Romania. 1876-1957)
Overall View of the Studio: Bird in Space (plaster), The Sorceress, Plato, Socrates, Princess X

c. 1923-24
Gelatin silver print
15 11/16 x 11 3/4" (39.9 x 29.8 cm)

Centre Pompidou, Musée national d'art moderne - Centre de création industrielle, Paris. Brancusi bequest, 1957

97.



CONSTANTIN BRANCUSI (French, born Romania. 1876-1957)
Overall View of the Studio: Bird in Space (plaster), Bird in Space (yellow marble), The Sorceress, Plato, Socrates, Princess X

c. 1923-24
Gelatin silver print
11 11/16 x 9 3/8" (29.7 x 23.8 cm)

Centre Pompidou, Musée national d'art moderne - Centre de création industrielle, Paris. Brancusi bequest, 1957

98.



CONSTANTIN BRANCUSI (French, born Romania. 1876-1957)
Architectural Project

1918
Gelatin silver print
11 3/8 x 8 1/4" (28.9 x 20.9 cm)

Centre Pompidou, Musée national d'art moderne - Centre de création industrielle, Paris. Brancusi bequest, 1957

99.

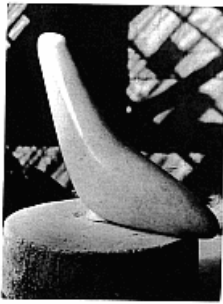


CONSTANTIN BRANCUSI (French, born Romania. 1876-1957)
Shadows

c. 1920
Gelatin silver print
11 3/4 x 9 7/16" (29.8 x 23.9 cm)

Centre Pompidou, Musée national d'art moderne - Centre de création industrielle, Paris. Brancusi bequest, 1957

100.



CONSTANTIN BRANCUSI (French, born Romania. 1876-1957)

Miracle (Seal I)

1937

Gelatin silver print

9 1/8 x 6 15/16" (23.1 x 17.6 cm)

Kunsthaus Zürich, Fotosammlung. Donation Carola Giedion-Welcker

101.



CONSTANTIN BRANCUSI (French, born Romania. 1876-1957)

Self-Portrait in the Studio: Endless Columns I to IV, Fish, Leda

c. 1934

Gelatin silver print

15 5/8 x 11 11/16" (39.7 x 29.7 cm)

Centre Pompidou, Musée national d'art moderne - Centre de création industrielle, Paris. Brancusi bequest, 1957

102.



CONSTANTIN BRANCUSI (French, born Romania. 1876-1957)

View of the Studio: Endless Columns I to III, Fish

c. 1933

Gelatin silver print

11 5/8 x 9 3/8" (29.6 x 23.8 cm)

Centre Pompidou, Musée national d'art moderne - Centre de création industrielle, Paris. Brancusi bequest, 1957

103.



CONSTANTIN BRANCUSI (French, born Romania. 1876-1957)

View of the Studio: Bird in Space (polished bronze), Endless Columns I to III, Fish, Mademoiselle Eugene Meyer, Jr.

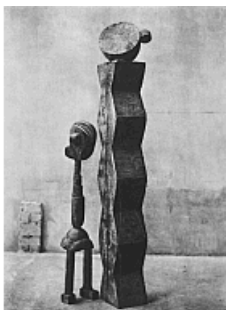
After 1930

Gelatin silver print

11 3/4 x 9 5/16" (29.9 x 23.7 cm)

Centre Pompidou, Musée national d'art moderne - Centre de création industrielle, Paris. Brancusi bequest, 1957

104.



CONSTANTIN BRANCUSI (French, born Romania. 1876-1957)

View of the Studio: The Child in the World, Mobile Group

Before December 27, 1917

Gelatin silver print

11 7/8 x 9 7/16" (30.1 x 23.9 cm)

Centre Pompidou, Musée national d'art moderne - Centre de création industrielle, Paris. Brancusi bequest, 1957

105.



CONSTANTIN BRANCUSI (French, born Romania. 1876-1957)
View of the Studio: The Cock, Bird in Space (white marble), Endless Columns I to IV, Fish

c. 1935
Gelatin silver print
11 3/4 x 9 5/16" (29.8 x 23.7 cm)

Centre Pompidou, Musée national d'art moderne - Centre de création industrielle,
Paris. Brancusi bequest, 1957

106.



CONSTANTIN BRANCUSI (French, born Romania. 1876-1957)
Endless Column at Voulangis

Fall 1927
Gelatin silver print
19 15/16 x 23 3/4" (50.6 x 60.3 cm)

Centre Pompidou, Musée national d'art moderne - Centre de création industrielle,
Paris. Brancusi bequest, 1957

Marcel Duchamp: The Readymade as Reproduction

107.



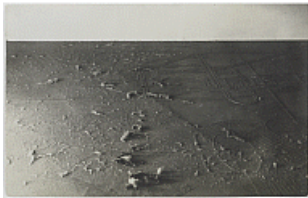
MARCEL DUCHAMP (American, born France. 1887-1968)
Sculpture for Traveling
1918
Gelatin silver print
2 3/4 x 1 15/16" (7 x 5 cm)
Kunsthaus Zürich, Fotosammlung

108.



HENRI-PIERRE ROCHÉ (French, 1879-1959)
33 West 67th Street, New York (Fountain, In Advance of the Broken Arm, Hat Rack)
1917-18
Gelatin silver print
2 7/16 x 1 1/2" (6.2 x 3.8 cm)
Philadelphia Museum of Art. Gift of Jacqueline, Paul, and Peter Matisse in memory of their mother Alexina Duchamp

109.



MAN RAY (American, 1890-1976)
MARCEL DUCHAMP (American, born France. 1887-1968)
Dust Breeding
1920
Gelatin silver print
2 13/16 x 4 5/16" (7.1 x 11 cm)
The Bluff Collection, LP

110.



ALFRED STIEGLITZ (American, 1864-1946)
Fountain (photograph of assisted Readymade by Marcel Duchamp)
1917
Gelatin silver print
9 1/4 x 7" (23.5 x 17.8 cm)
Collection Jacqueline Matisse Monnier

111.



MARCEL DUCHAMP (American, born France. 1887-1968), H.P. ROCHÉ (French, 1879-1959), BEATRICE WOOD (American, 1893-1998)
"The Richard Mutt Case" in *The Blind Man no. 2*
1917
Journal
10 x 15 1/2" (25.4 x 39.4 cm)
Francis M. Naumann Fine Art, New York

112.



MAN RAY (American, 1890-1976)
Marcel Duchamp with Rotary Glass Plates Machine (in Motion)
1920
Gelatin silver print
4 15/16 x 3" (12.5 x 7.6 cm)
Collection Timothy Baum, New York

113.



MAN RAY (American, 1890-1976)
Duchamp's Studio at 246 West 73rd Street, New York City
1920
Gelatin silver print
4 15/16 x 3 1/2" (12.5 x 8.9 cm)
Philadelphia Museum of Art. Purchased with the Alice Newton Osborn Fund and with funds contributed by Alice Saligman, Ann and Donald W. McPhail, and the ARCO Foundation upon the occasion of the 100th birthday of Marcel Duchamp, 1987

114.



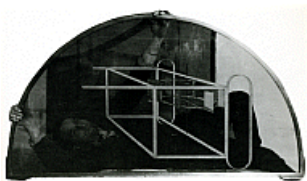
MARCEL DUCHAMP (American, born France. 1887-1968)
Box in a Valise (From or by Marcel Duchamp or Rose Sélavy)
1935-41
Leather valise containing miniature replicas, photographs, color reproductions of works by Duchamp, and one "original" drawing [Large Glass, collotype on celluloid, 7 1/2 x 9 1/2" (19 x 23.5 cm)]
16 x 15 x 4" (40.7 x 38.1 x 10.2 cm)
The Museum of Modern Art, New York. James Thrall Soby Fund

115.



MARCEL DUCHAMP (American, born France. 1887-1968)
Cast Shadows
1918
Gelatin silver print from glass negative, printed 2010
8 5/16 x 5 1/2" (21.1 x 13.9 cm)
Philadelphia Museum of Art. Gift of Jacqueline, Paul and Peter Matisse in memory of their mother, Alexina Duchamp

116.



MAN RAY (American, 1890-1976)
Duchamp with "Water Mill Within Glider, in Neighboring Metals"
1917
Gelatin silver print
3 3/8 x 6 1/16" (8.6 x 15.4 cm)
The J. Paul Getty Museum, Los Angeles, California, 86.XM.626.4

117.



JOHN D. SCHIFF (American, born Germany. 1907-1976)

The Large Glass Installed Before a Window Overlooking the Garden at Katherine S. Dreier's Home, Milford, Connecticut

c. 1948

Gelatin silver print

12 1/8 x 8 3/8" (30.8 x 21.2 cm)

Philadelphia Museum of Art. Gift of Jacqueline, Paul, and Peter Matisse in memory of their mother Alexina Duchamp

118.



BRUNO BRAQUEHAIS (French, 1823-1875)
Paris During the Commune, the Destruction of the Vendôme Column
1871
Albumen silver print from a collodion negative
6 5/16 x 8 7/16" (16 x 21.5 cm)
Bibliothèque nationale de France, Paris

119.



BRUNO BRAQUEHAIS (French, 1823-1875)
Place Vendôme
1871
Albumen silver print from a collodion negative
8 1/4 x 6 5/16" (21 x 16 cm)
Bibliothèque nationale de France, Paris

120.



CHARLES NÈGRE (French, 1820-1880)
The Vampire
c. 1853
Salted paper print
13 x 9 3/16" (33 x 23.4 cm)
National Gallery of Canada, Ottawa
Purchased 1968

121.



ALOIS LÖCHERER (German, 1815-1862)
Transporting the Bavaria Statue to the Theresienwiese
August 7, 1850
Salt paper print
9 15/16 x 9 1/8" (25.2 x 23.2 cm)
Museum Ludwig, Cologne/Sammlung Agfa

122.



UNKNOWN PHOTOGRAPHER
Untitled
1921
Gelatin silver print
4 1/8 x 2 5/16" (10.5 x 5.8 cm)
The Museum of Modern Art, New York. Gift of Thomas Walther

123.



S.L.A. MARSHALL (American, 1900-1977)

A Trepanning Operation on the Nation's Great Men in a Mountain Memorial
1938

Gelatin silver print

9 9/16 x 6 1/4" (24.3 x 15.8 cm)

The Museum of Modern Art, New York. The New York Times Collection

124.



NIKOLAI KULESHOV (Russian)

Moscow

c. 1938

Gelatin silver print

18 1/8 x 23 3/8" (46 x 59.4 cm)

The Museum of Modern Art, New York. Gift of Harriette and Noel Levine

125.



IGOR MOUKHIN (Russian, born 1961)

Gorohovets, the Monument of the Worker

1992

Gelatin silver print

13 11/16 x 20 1/2" (34.8 x 52.1 cm)

The Museum of Modern Art, New York. Acquired through the generosity of the Junior Associates of The Museum of Modern Art

126.



SIBYLLE BERGEMANN (German, born 1941)

The Monument, East Berlin

1986

Gelatin silver print

19 11/16 x 23 5/8" (50 x 60 cm)

Sibylle Bergemann/Ostkreuz Agentur der Fotografen, Berlin

127.



ANSELM KIEFER (German, born 1945)

Occupations (1969) in *Interfunktionen* no. 12

1975

Journal

11 3/8 x 8 3/16" (28.9 x 20.8 cm)

The Museum of Modern Art Library, New York

128.



AI WEIWEI (Chinese, born 1957)
Study of Perspective—San Marco
1995-2003
Gelatin silver print
15 5/16 x 23 1/4" (38.9 x 59 cm)

The Museum of Modern Art, New York. Acquired through the generosity of the Photography Council Fund and the Contemporary Arts Council of The Museum of Modern Art

129.



HENRI CARTIER-BRESSON (French, 1908-2004)
Capitol, Washington, United States
1957
Gelatin silver print
11 9/16 x 7 13/16" (29.3 x 19.8 cm)
Fondation Henri Cartier-Bresson, Paris

130.



HENRI CARTIER-BRESSON (French, 1908-2004)
"What Are the Americans Up To?" in *Paris Match*
May 10, 1958
Journal
13 3/4 x 10 7/16" (35 x 26.5 cm)
The Museum of Modern Art, New York. Purchase

131.



HENRI CARTIER-BRESSON (French, 1908-2004)
Capitol, Washington, United States
1957
Gelatin silver print
6 5/16 x 9 7/16" (16 x 24 cm)
Fondation Henri Cartier-Bresson, Paris

132.



HENRI CARTIER-BRESSON (French, 1908-2004)
Tuskegee, Alabama, United States
1961
Gelatin silver print
11 11/16 x 7 15/16" (29.7 x 20.1 cm)
Fondation Henri Cartier-Bresson, Paris

133.



HENRI CARTIER-BRESSON (French, 1908-2004)
Place de la République, Paris
May 28, 1958
Gelatin silver print
11 7/8 x 7 15/16" (30.1 x 20.2 cm)
Fondation Henri Cartier-Bresson, Paris

134.



HENRI CARTIER-BRESSON (French, 1908-2004)
Vatican, Rome, Italy
1958
Gelatin silver print
10 11/16 x 7 1/16" (27.2 x 18 cm)
Fondation Henri Cartier-Bresson, Paris

135.



HENRI CARTIER-BRESSON (French, 1908-2004)
Polonnaruwa, Ceylon
March 1950
Gelatin silver print
9 1/4 x 13 7/16" (23.5 x 34.2 cm)
Fondation Henri Cartier-Bresson, Paris

136.



HENRI CARTIER-BRESSON (French, 1908-2004)
"Forty Miles From Heaven" in *Illustrated*
April 28, 1951
Journal
13 9/16 x 10 3/16" (34.4 x 25.8 cm)
The Museum of Modern Art, New York. Purchase

137.



BERENICE ABBOTT (American, 1898-1991)
Father Duffy, Times Square
April 14, 1937
Gelatin silver print
9 5/16 x 7 5/8" (23.7 x 19.4 cm)
The Museum of Modern Art, New York. Gift of Ronald A. Kurtz

138.



WALKER EVANS (American, 1903-1975)

Stamped Tin Relic

1929

Gelatin silver print, printed c. 1970

4 11/16 x 6 5/8" (11.9 x 16.9 cm)

The Museum of Modern Art, New York. Lily Auchincloss Fund

139.



WALKER EVANS (American, 1903-1975)

Battlefield Monument, Vicksburg, Mississippi

1936

Gelatin silver print

7 5/8 x 9 5/8" (19.3 x 24.5 cm)

The Museum of Modern Art, New York. Gift of the photographer

140.



ROBERT FRANK (American, born Switzerland 1924)

St. Francis, Gas Station and City Hall, Los Angeles

1956

Gelatin silver print

7 15/16 x 11 15/16" (20.1 x 30.3 cm)

The Museum of Modern Art, New York. Acquired through the generosity of Susan G. Jacoby in honor of her father, Edward Goldberger

141.



LEE FRIEDLANDER (American, born 1934)

Father Duffy, Times Square, New York City

1974

Gelatin silver print

14 3/4 x 22 1/4" (37.5 x 56.5 cm)

The Museum of Modern Art, New York. Carl Jacobs Fund

142.



LEE FRIEDLANDER (American, born 1934)

To Michigan Soldiers and Sailors, Campus Maritus, Detroit, Michigan

1972

Gelatin silver print

7 3/8 x 11 1/8" (18.8 x 28.3 cm)

The Museum of Modern Art, New York. Purchase

143.



LEE FRIEDLANDER (American, born 1934)
George Washington. Milwaukee, Wisconsin
1974
Gelatin silver print
11 1/4 x 7 1/2" (28.5 x 19.1 cm)
The Museum of Modern Art, New York. Purchase

144.



LEE FRIEDLANDER (American, born 1934)
Boston, Massachusetts
1981
Gelatin silver print
8 1/16 x 12" (20.4 x 30.5 cm)
The Museum of Modern Art, New York. Purchase

145.



LEE FRIEDLANDER (American, born 1934)
Order of Elks Cemetery, Greenwood Cemetery. New Orleans, Louisiana
1973
Gelatin silver print
11 1/16 x 7 3/8" (28.1 x 18.8 cm)
The Museum of Modern Art, New York. Purchase

146.



LEE FRIEDLANDER (American, born 1934)
Merchandise Mart Hall of Fame. Chicago, Illinois
1974
Gelatin silver print
7 1/2 x 11 1/4" (19.1 x 28.6 cm)
The Museum of Modern Art, New York. Purchase

147.



LEE FRIEDLANDER (American, born 1934)
Spokane, Washington
1974
Gelatin silver print
10 7/8 x 7 5/16" (27.7 x 18.5 cm)
The Museum of Modern Art, New York. Purchase

148.



LEE FRIEDLANDER (American, born 1934)
J.S.T. Stranahan and Memorial Arch. Grand Army Plaza, Brooklyn
1974
Gelatin silver print
12 1/16 x 8 1/16" (30.6 x 20.4 cm)
The Museum of Modern Art, New York. Purchase

149.



LEE FRIEDLANDER (American, born 1934)
Volunteer Firemen. Walden, New York
1972
Gelatin silver print
7 9/16 x 11 1/4" (19.2 x 28.6 cm)
The Museum of Modern Art, New York. Purchase

150.



LEE FRIEDLANDER (American, born 1934)
Hart's Fifteenth New York Battery. Gettysburg National Military Park, Pennsylvania
1974
Gelatin silver print
12 1/16 x 8 1/16" (30.6 x 20.4 cm)
The Museum of Modern Art, New York. Acquired through the generosity of Shirley C. Burden

151.



LEE FRIEDLANDER (American, born 1934)
To Those Who Made the Supreme Sacrifice. Bellows Falls, Vermont
1971
Gelatin silver print
7 9/16 x 11 1/4" (19.1 x 28.5 cm)
The Museum of Modern Art, New York. Acquired through the generosity of Shirley C. Burden

152.



LEE FRIEDLANDER (American, born 1934)
The Broncho Buster. Civic Center Mall, Denver, Colorado
1972
Gelatin silver print
11 1/4 x 7 1/2" (28.5 x 19.1 cm)
The Museum of Modern Art, New York. Purchase

153.



LEE FRIEDLANDER (American, born 1934)
Seventh Regiment Doughboys. New York, New York
1973
Gelatin silver print
7 1/16 x 10 5/8" (17.9 x 27 cm)
The Museum of Modern Art, New York. Purchase

154.



LEE FRIEDLANDER (American, born 1934)
Major General Harry W. Slocum, Napoleon Gun, and Stevens' Fifth Maine Battery Marker. Gettysburg National Military Park. Gettysburg, Pennsylvania
1974
Gelatin silver print
7 9/16 x 11 1/4" (19.3 x 28.6 cm)
The Museum of Modern Art, New York. Acquired with matching funds from Jo Carole and Ronald S. Lauder and the National Endowment for the Arts

155.



LEE FRIEDLANDER (American, born 1934)
Lincoln Memorial. Washington D.C.
1976
Gelatin silver print
11 1/8 x 7 3/8" (28.3 x 18.8 cm)
The Museum of Modern Art, New York. Purchase

156.



LEE FRIEDLANDER (American, born 1934)
Theodore Roosevelt. Roosevelt Island, Washington, D.C.
1972
Gelatin silver print
7 1/2 x 11 1/4" (19.1 x 28.6 cm)
The Museum of Modern Art, New York. Purchase

157.



LEE FRIEDLANDER (American, born 1934)
Commodore John Paul Jones. West Potomac Park, Washington, D.C.
1973
Gelatin silver print
12 1/16 x 8" (30.6 x 20.3 cm)
The Museum of Modern Art, New York. Purchase

158.



LEE FRIEDLANDER (American, born 1934)

Kiener Memorial Fountain and Runner Statue. Gateway Mall, Saint Louis, Missouri

1972

Gelatin silver print

7 1/2 x 11 1/4" (19.1 x 28.6 cm)

The Museum of Modern Art, New York. Purchase

159.



LEE FRIEDLANDER (American, born 1934)

Bunker Hill Monument and Statue of William Prescott. Boston, Massachusetts

1974

Gelatin silver print

11 1/8 x 7 3/8" (28.3 x 18.8 cm)

The Museum of Modern Art, New York. Purchase

160.



LEE FRIEDLANDER (American, born 1934)

Mount Rushmore. South Dakota

1969

Gelatin silver print

15 1/8 x 22 3/8" (38.4 x 56.8 cm)

The Museum of Modern Art, New York. Purchase

161.



GARRY WINOGRAND (American, 1928-1984)

Forest Lawn Cemetery, Los Angeles

1964

Gelatin silver print

8 7/8 x 13 7/16" (22.6 x 34.1 cm)

The Museum of Modern Art, New York. Purchase

162.



JOSEF KOUDELKA (Czech, born 1938)

France

1973

Gelatin silver print

9 3/8 x 14 1/8" (23.9 x 36.0 cm)

The Museum of Modern Art, New York. Joseph Strick Fund

163.



TOD PAPAGEORGE (American, born 1940)

Alice in Wonderland

1978

Gelatin silver print

18 11/16 x 12 1/4" (47.5 x 31.2 cm)

The Museum of Modern Art, New York. Gift of Robert L. Smith

164.



ROSALIND SOLOMON (American, born 1930)

Immersion of Goddess Durga, Calcutta, India

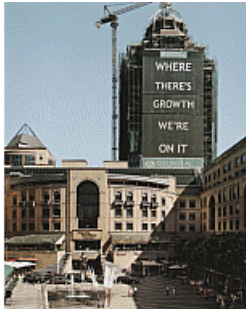
1982

Gelatin silver print, printed 1986

14 3/4 x 14 7/8" (37.6 x 37.8 cm)

The Museum of Modern Art, New York. Gift of the photographer

165.



DAVID GOLDBLATT (South African, born 1930)

Mother and Child on Nelson Mandela Square, Sandton, Johannesburg

March 8, 2005

Pigmented inkjet print

27 5/8 x 22 1/16" (70.2 x 56 cm)

The Museum of Modern Art, New York. Geraldine J. Murphy Fund

166.



DAVID GOLDBLATT (South African, born 1930)

Monument Honouring the 'Contribution of the Horse to South African History,' Erected by the Rapportryers of Bethulie in 1982. Laura Rautenbach was the Sculptor.

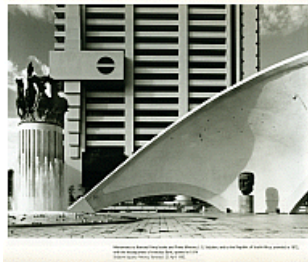
February 12, 2005

Pigmented inkjet print

21 5/8 x 27 5/16" (55 x 69.4 cm)

The Museum of Modern Art, New York. Samuel J. Wagstaff, Jr. Fund

167.



DAVID GOLDBLATT (South African, born 1930)

Monuments to National Party leader and Prime Minister, J.G. Strijdom, and to the Republic of South Africa, Unveiled in 1972, With the Headquarters of Volkskas Bank, Opened in 1974. Strijdom Square, Pretoria, Transvaal.

25 April 1982

Gelatin silver print

10 13/16 x 13 3/4" (27.5 x 35 cm)

Courtesy the artist and Goodman Gallery, Johannesburg

168.



DAVID GOLDBLATT (South African, born 1930)

Memorial to Those Killed in the 'Langa Massacre', 21 March 1985, and to Others Who Died in the Struggle Against Apartheid; Vandalized in 1987 by Black Vigilantes Funded by Military Intelligence, Kwanabuhle Cemetery, Uitenhage, Cape Province.

15 September 1990

Gelatin silver print

13 9/16 x 10 5/8" (34.5 x 27 cm)

Courtesy the artist and Goodman Gallery, Johannesburg

169.



DAVID GOLDBLATT (South African, born 1930)

A Whole and a Headless Monument to the 'Triumph of the Dutch Language' Together With Other Afrikaner Monuments. Burgersdorp, Cape.

29 September 1990

Gelatin silver print

10 13/16 x 13 9/16" (27.5 x 34.5 cm)

Courtesy the artist and Goodman Gallery, Johannesburg

170.



DAVID GOLDBLATT (South African, born 1930)

Monument to Karel Landman, Voortrekker Leader, De Kol, Eastern Cape

10 April 1993

Gelatin silver print

10 15/16 x 13 11/16" (27.9 x 34.8 cm)

The Museum of Modern Art, New York. Purchase

171.



DAVID GOLDBLATT (South African, born 1930)

HF Verwoerd Building, Headquarters of the Provincial Administration, Inaugurated on 17 October 1969, Bloemfontein, Orange Free State.

26 December 1990

Gelatin silver print

10 13/16 x 13 9/16" (27.5 x 34.5 cm)

Courtesy the artist and Goodman Gallery, Johannesburg

172.



DAVID GOLDBLATT (South African, born 1930)

Monument to the Struggle for Boer Independence Which Continued With the Pen When Armed Resistance was Over, Unveiled on 30 March 1968. Soetwater, Calvinia, Cape.

6 November 1993

Gelatin silver print

10 13/16 x 13 9/16" (27.5 x 34.5 cm)

Courtesy the artist and Goodman Gallery, Johannesburg

173.



GUY TILLIM (South African, born 1962)
Bust of Agostinho Neto, Quibala, Angola
2008

Pigmented inkjet print
17 3/16 x 25 3/4" (43.6 x 65.4 cm)

The Museum of Modern Art, New York. Acquired through the generosity of the Contemporary Arts Council of The Museum of Modern Art

174.



GUY TILLIM (South African, born 1962)

Statue of Henry Stanley which Overlooked Kinshasa in Colonial Times
2004

Pigmented inkjet prints
18 3/4 x 28 5/8" (47.6 x 72.7 cm) each

The Museum of Modern Art, New York. Acquired through the generosity of the Contemporary Arts Council of The Museum of Modern Art

The Studio Without Walls: Sculpture in the Expanded Field

175.



CYPRIEN GAILLARD (French, born 1980)
FROM *Geographical Analogies*

Surville, Montereau-Fault-Yonne, France; Standing Stones of Stenness, Orkney, Scotland; Ring O'Brodgar, Orkney, Scotland; Angkor, Cambodia
2006-09

Dye diffusion transfer prints (Polaroids), wood, glass, and cardboard
25 9/16 x 18 7/8 x 3 15/16" (65 x 48 x 10 cm)

Courtesy the artist and Laura Bartlett Gallery, London / Bugada & Cargnel, Paris

176.



Pripyat, Ukraine; Chernobyl, Ukraine; Fritz Koenig: Sphere, Battery Park, New York, USA

177.



Firminy-Vert, Firminy, France; Église Saint-Pierre, Firminy, France; Stonehenge, Amesbury, England; Sighthill Stone Circle, Glasgow, Scotland; Caldragh Graveyard, Boa Island, Northern Ireland

178.



Alton Estate, Roehampton, England; Château d'Oiron, Oiron, France; La Noé, Chanteloup-les-Vignes, France

179.



The Friendship Arch, Khreschatyk Park, Kiev, Ukraine; Kom Ombo, Egypt; Phnom Sampeau Fort, Battambang, Cambodia; Grave of Gordon Matta-Clark, Sag Harbor, USA; Statue of Chief Clinton Rickard, Niagara Falls State Park, USA

180.



CYPRIEN GAILLARD (French, born 1980)
From *Geographical Analogies* (cont'd)

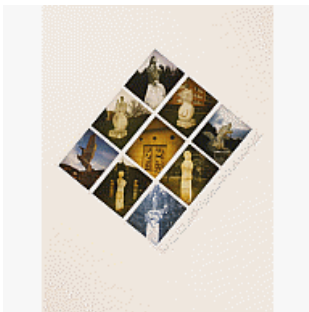
East 8th Avenue, Gary, USA; Parc Mémorial Canadien de Vimy, Vimy, France; Pennsylvania Street, Gary, USA; Les Fantômes, La Butte Chalmont, Oulchy-le-Château, France; Robert Indiana: Ahava, Jerusalem, Israel

181.



Mount Rushmore, South Dakota, USA; Empire State Building, New York, USA; 6 Mile Road, Detroit, USA; Casper Bridge, Rivertown, USA; Golden Gate Park, San Francisco, USA; Hope Community Church, Detroit, USA

182.



Petržalka, Bratislava, Slovakia; Dúbravka, Bratislava, Slovakia; Le Petit Trianon, Château de Versailles, France; Firminy-Vert, Firminy, France; Pégase, Lac de Joux, Switzerland; Le Louvre, Paris, France

183.



Château d'Azay-le-Rideau, Azay-le-Rideau, France; Château d'Oiron, Oiron, France; Obolon, Kiev, Ukraine; Giant's Causeway, Antrim, Northern Ireland; Dnipro, Kiev, Ukraine; Elgin Cathedral, Elgin, Scotland; Statue of Voltaire, Charcot, Dijon, France

184.



Allegheny Cemetery, Pittsburgh, USA; Fort de Bambesch, Bambiderstroff, France; East Liberty Housing Project, Pittsburgh, USA; Fort de Douaumont, Verdun, France; Commando Memorial, Spean Bridge, Scotland

185.



CHRISTO (CHRISTO JAVACHEFF) (American, born Bulgaria 1935)
441 Barrels Structure— "The Wall" (Project for 53rd between 5th and 6th Avenues)

1968
Pasted gelatin silver prints and synthetic polymer paint on cardboard
22 1/8 x 28" (56 x 71.1 cm)

The Museum of Modern Art, New York. Gift of Louise Ferrari

186.



CHRISTO (CHRISTO JAVACHEFF) (American, born Bulgaria 1935)
"The Museum of Modern Art Packed Project"

1968
Oil on cut-and-pasted gelatin silver prints (by Ferdinand Boesch) on board with pencil, colored pencil, cut-and-pasted transparentized paper, and pressure-sensitive tape on board
21 3/4 x 15 1/2" (55.2 x 39.5 cm)

The Museum of Modern Art, New York. Gift of D. and J. de Menil

187.



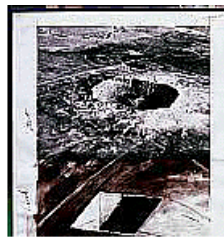
RICHARD LONG (British, born 1945)

Whirlwind Spiral. The Sahara

1988
Gelatin silver print
18 11/16 x 27 3/16" (47.5 x 69 cm)

Kunsthau Zurich, Fotosammlung

188.



MICHAEL HEIZER (American, born 1944)

Untitled

1969
Gelatin silver print, graphite pencil, pen and black ink, watercolor and paper collage element on paper
39 1/16 x 30" (99.2 x 76.2 cm)

Whitney Museum of American Art, New York. Gift of Norman Dubrow
80.26.1 a-b

189.



ROBERT BARRY (American, born 1936)

Inert Gas Series: Neon

1969
Gelatin silver prints and text
8 x 10" (20.3 x 25.4 cm) each photograph; 11 x 8 1/2" (27.9 x 21.6 cm) text

Collection Aaron and Barbara Levine

190.



DENNIS OPPENHEIM (American, born 1938)

Annual Rings

1968

Mixed media

40 x 30" (101.6 x 76.2 cm)

The Metropolitan Museum of Art, The Horace W. Goldsmith Foundation Gift, through Joyce and Robert Menschel, 1999 (1999.212)

191.



ROBERT SMITHSON (American, 1938-1973)

Yucatan Mirror Displacements (1-9)

1969

Chromogenic color prints from 35mm slides, printed 2010

24 x 24" (61 x 61 cm) each

Solomon R. Guggenheim Museum, New York. Purchased with funds contributed by the Photography Committee and with funds contributed by the International Director's Council and Executive Committee Members: Edythe Broad, Henry Buhl, Elaine Turner Cooper, Linda Fischbach, Ronnie Heyman, Dakis Joannou, Cindy Johnson, Barbara Lane, Linda Macklowe, Brian McIver, Peter Norton Foundation, Willem Pepler, Denise Rich, Rachel Rudin, David Teiger, Ginny Williams, Elliot K. Wolk, 1999

192.



ROBERT SMITHSON (American, 1938-1973)

"Incidents of Mirror-Travel in the Yucatan" in *Artforum* 8, no. 1

September 1969

10 5/8 x 10 5/8" (27 x 27 cm)

The Museum of Modern Art Library, New York

193.



GORDON MATTA-CLARK (American, 1945-1978)

Circus—The Caribbean Orange

1978

Silver dye bleach print

39 1/2 x 29 7/8" (100.3 x 75.9 cm)

The Museum of Modern Art, New York. Acquired through the generosity of The Junior Associates of The Museum of Modern Art, with contributions from Robert Beyer, Ellen R. Herman, Scott J. Lorinsky, Steven T. Mnuchin and Muffy Perlbinde

194.



ZHANG DALI (Chinese, born 1963)
Demolition: Forbidden City, Beijing
1998
Chromogenic color print
35 9/16 x 23 11/16" (90.3 x 60.1 cm)
The Museum of Modern Art, New York. Gift of Larry Warsh

195.



BRUCE NAUMAN (American, born 1941)
Composite Photo of Two Messes on the Studio Floor
1967
Gelatin silver print
40 1/2" x 10' 3" (102.9 x 312.4 cm)
The Museum of Modern Art, New York. Gift of Philip Johnson

196.



RACHEL WHITEREAD (British, born 1963)
Drawing for Water Tower, IV
1997
Chromogenic color prints
11 7/8 x 13 1/4" (30.2 x 33.7 cm)
The Museum of Modern Art, New York. Purchase

197.



RACHEL WHITEREAD (British, born 1963)
Drawing for Water Tower, V
1997
Tape, ink, varnish and correction fluid on chromogenic color prints
19 7/8 x 17 1/2" (50.5 x 44.5 cm)
The Museum of Modern Art, New York. Purchase

198.



RACHEL WHITEREAD (British, born 1963)
Drawing for Water Tower, VIII
1997
Varnish and pencil on gelatin silver print
10 5/8 x 7 3/4" (27 x 19.7 cm)
The Museum of Modern Art, New York. Purchase

199.



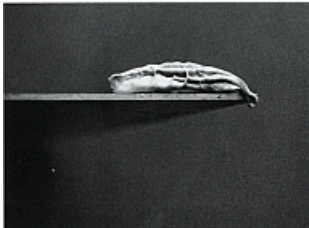
ALINA SZAPOCZNIKOW (Polish, 1926-1973)
Photograph by ROMAN CIESLEWICZ (French, born Poland. 1930-1996)
Photosculptures
1971
Gelatin silver print
7 1/16 x 9 7/16" (18 x 24 cm)
Centre Pompidou, Musée national d'art moderne - Centre de création industrielle,
Paris. Purchase, 2007

200.



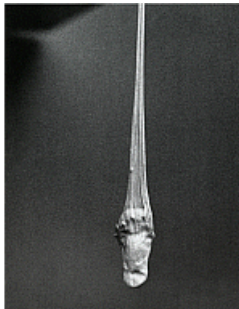
ALINA SZAPOCZNIKOW (Polish, 1926-1973)
Photograph by ROMAN CIESLEWICZ (French, born Poland. 1930-1996)
Photosculptures
1971
Gelatin silver print
7 1/16 x 9 7/16" (18 x 24 cm)
Centre Pompidou, Musée national d'art moderne - Centre de création industrielle,
Paris. Purchase, 2007

201.



ALINA SZAPOCZNIKOW (Polish, 1926-1973)
Photograph by ROMAN CIESLEWICZ (French, born Poland. 1930-1996)
Photosculptures
1971
Gelatin silver print
7 1/16 x 9 7/16" (18 x 24 cm)
Centre Pompidou, Musée national d'art moderne - Centre de création industrielle,
Paris. Purchase, 2007

202.



ALINA SZAPOCZNIKOW (Polish, 1926-1973)
Photograph by ROMAN CIESLEWICZ (French, born Poland. 1930-1996)
Photosculptures
1971
Gelatin silver print
9 7/16 x 7 1/16" (24 x 18 cm)
Centre Pompidou, Musée national d'art moderne - Centre de création industrielle,
Paris. Purchase, 2007

203.



ALINA SZAPOCZNIKOW (Polish, 1926-1973)
Photograph by ROMAN CIESLEWICZ (French, born Poland. 1930-1996)
Photosculptures
1971
Gelatin silver print
9 7/16 x 7 1/16" (24 x 18 cm)
Centre Pompidou, Musée national d'art moderne - Centre de création industrielle,
Paris. Purchase, 2007

204.



ALINA SZAPOCZNIKOW (Polish, 1926-1973)
 Photograph by ROMAN CIESLEWICZ (French, born Poland. 1930-1996)
Photosculptures
 1971
 Gelatin silver print
 9 7/16 x 7 1/16" (24 x 18 cm)
 Centre Pompidou, Musée national d'art moderne - Centre de création industrielle,
 Paris. Purchase, 2007

205.



BRASSAÏ (GYULA HALÁSZ) (French, born Transylvania. 1899-1984)
Involuntary Sculpture (Cotton)
 1932
 Gelatin silver print
 7 x 9 1/4" (17.8 x 23.5 cm)
 The Beth and Uri Shabto Collection, courtesy Edwynn Houk Gallery, New York

206.



BRASSAÏ (GYULA HALÁSZ) (French, born Transylvania. 1899-1984)
Involuntary Sculpture (Dust)
 Gelatin silver print
 9 1/4 x 7" (23.5 x 17.8 cm)
 The Beth and Uri Shabto Collection, courtesy Edwynn Houk Gallery, New York

207.



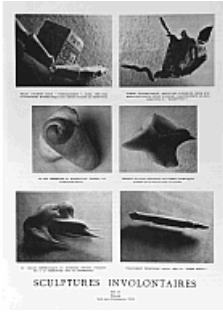
BRASSAÏ (GYULA HALÁSZ) (French, born Transylvania. 1899-1984)
Involuntary Sculpture (Smearred Toothpaste)
 c. 1932
 Gelatin silver print
 7 x 9 1/4" (17.8 x 23.5 cm)
 Edwynn Houk Gallery, New York

208.



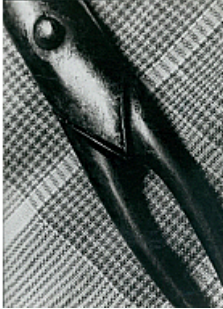
BRASSAÏ (GYULA HALÁSZ) (French, born Transylvania. 1899-1984)
Involuntary Sculpture (Rolled-up Bus Ticket)
 c. 1932
 Salt silver print
 6 11/16 x 9 1/4" (17 x 23.5 cm)
 The Beth and Uri Shabto Collection, courtesy Edwynn Houk Gallery, New York

209.



BRASSAÏ (GYULA HALÁSZ) (French, born Transylvania. 1899-1984)
 "Involuntary Sculptures" in *Minotaure* no. 3-4
 1933
 Journal
 11 15/16 x 9 1/16" (30.3 x 23 cm)
 The Museum of Modern Art Library, New York

210.



BRASSAÏ (GYULA HALÁSZ) (French, born Transylvania. 1899-1984)
Woman's Torso (Scissors)
 c. 1930-31
 Gelatin silver print
 9 1/4 x 6 3/4" (23.5 x 17.1 cm)
 The Beth and Uri Shabto Collection, courtesy Edwynn Houk Gallery, New York

211.



MAN RAY (American, 1890-1976)
The Enigma of Isidore Ducasse
 1920
 Gelatin silver print, printed early 1950s
 3 7/8 x 4 5/8" (9.9 x 11.7 cm)
 Collection Andrew Strauss, Paris

212.



MAN RAY (American, 1890-1976)
 Preface to *La Révolution surréaliste* no. 1
 December 1924
 Journal
 11 1/2 x 8" (29.2 x 20.3 cm)
 The Museum of Modern Art Library, New York

213.



MAN RAY (American, 1890-1976)
Integration of Shadows
 1918
 Gelatin silver print
 9 3/16 x 6 3/4" (23.3 x 17.2 cm)
 Private collection

214.



MAN RAY (American, 1890-1976)

Man

1918

Gelatin silver print

19 x 14 1/2" (48.3 x 36.8 cm)

The Bluff Collection 2, LP

215.



DAVID SMITH (American, 1906-1965)

Untitled

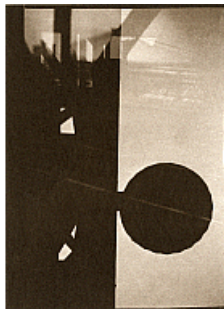
c. 1932-35

Gelatin silver print

3 7/16 x 4 7/8" (8.7 x 12.4 cm)

Private collection

216.



DAVID SMITH (American, 1906-1965)

Untitled

c. 1932-35

Gelatin silver print

6 1/2 x 4 3/4" (16.5 x 12.1 cm)

Private collection

217.



DAVID SMITH (American, 1906-1965)

Untitled (Bolton Landing Tableau) with Construction

1932

Gelatin silver print with applied varnish

10 x 7 3/16" (25.4 x 18.3 cm)

Private collection

218.



ROBERT GOBER (American, born 1954)

Untitled

1999

Gelatin silver print

14 5/8 x 11 1/4" (37.1 x 28.6 cm)

The Metropolitan Museum of Art, New York, Purchase, The Horace W. Goldsmith Foundation Gift, through Joyce and Robert Menschel, 2000 (2000.334.1)

219.



ROBERT GOBER (American, born 1954)

Untitled

1999

Gelatin silver print

9 13/16 x 12 3/8" (25 x 31.5 cm)

The Metropolitan Museum of Art, Purchase, The Horace W. Goldsmith Foundation Gift, through Joyce and Robert Menschel, 2000 (2000.115)

220.



ROBERT GOBER (American, born 1954)

CHRISTOPHER WOOL (American, born 1955)

Untitled

1988

Gelatin silver print

13 1/8 x 10 1/8" (33.3 x 25.7 cm)

The Museum of Modern Art, New York. Gift of Werner and Elaine Dannheisser

221.



MARCEL DUCHAMP (American, born France. 1887-1968)

Cigarette Covers

1936

Gelatin silver print colored with aniline

11 13/16 x 15 3/4" (30 x 40 cm)

Centre Pompidou, Musée national d'art moderne - Centre de création industrielle, Paris. Purchase, 1988

222.



MARCEL BROODTHAERS (Belgian, 1924-1976)

Daguerre's Soup

1974

Chromogenic color prints mounted on paper

21 x 20 1/2" (53.3 x 52.1 cm)

Kunsthaus Zürich, Grafische Sammlung

223.



PETER FISCHLI (Swiss, born 1952)

DAVID WEISS (Swiss, born 1946)

Father

1986

Gelatin silver print

15 3/4 x 11 13/16" (40 x 30 cm)

Courtesy the artists and Matthew Marks Gallery, New York

224.



PETER FISCHLI (Swiss, born 1952)

DAVID WEISS (Swiss, born 1946)

Mrs. Pear Bringing Her Husband a Freshly Ironed Shirt for the Opera. The Boy Smokes.

1984

Chromogenic color print

11 13/16 x 15 3/4" (30 x 40 cm)

Courtesy the artists and Matthew Marks Gallery, New York

225.



PETER FISCHLI (Swiss, born 1952)

DAVID WEISS (Swiss, born 1946)

Outlaws

1984

Chromogenic color print

15 3/4 x 11 13/16" (40 x 30 cm)

Courtesy the artists and Matthew Marks Gallery, New York

226.



PETER FISCHLI (Swiss, born 1952)

DAVID WEISS (Swiss, born 1946)

Quiet Afternoon

1984

Chromogenic color print

15 3/4 x 11 13/16" (40 x 30 cm)

Courtesy the artists and Matthew Marks Gallery, New York

227.



PETER FISCHLI (Swiss, born 1952)

DAVID WEISS (Swiss, born 1946)

The Proud Cook

1984

Gelatin silver print

15 3/4 x 11 13/16" (40 x 30 cm)

Courtesy the artists and Matthew Marks Gallery, New York

228.



PETER FISCHLI (Swiss, born 1952)

DAVID WEISS (Swiss, born 1946)

The Three Sisters

1984

Chromogenic color print

11 13/16 x 15 3/4" (30 x 40 cm)

Courtesy the artists and Matthew Marks Gallery, New York

229.



GABRIEL OROZCO (Mexican, born 1962)
Cats and Watermelons
1992
Silver dye bleach print
12 7/16 x 18 5/8" (31.6 x 47.3 cm)
Collection Jill Sussman and Victor Imbimbo

230.



RACHEL HARRISON (American, born 1966)
From *Voyage of the Beagle*
2007
Fifty-seven pigmented inkjet prints
16 x 12" (40.6 x 30.5 cm) each
The Museum of Modern Art, New York. Fund for the Twenty-First Century

231.



232.



233.



234.



RACHEL HARRISON (American, born 1966)

From *Voyage of the Beagle*

2007

Fifty-seven pigmented inkjet prints

16 x 12" (40.6 x 30.5 cm) each

The Museum of Modern Art, New York. Fund for the Twenty-First Century

235.



236.



237.



238.



239.



RACHEL HARRISON (American, born 1966)

From *Voyage of the Beagle*

2007

Fifty-seven pigmented inkjet prints

16 x 12" (40.6 x 30.5 cm) each

The Museum of Modern Art, New York. Fund for the Twenty-First Century

240.



241.



242.



243.



244.



RACHEL HARRISON (American, born 1966)

From *Voyage of the Beagle*

2007

Fifty-seven pigmented inkjet prints

16 x 12" (40.6 x 30.5 cm) each

The Museum of Modern Art, New York. Fund for the Twenty-First Century

245.



246.



247.



248.



249.



RACHEL HARRISON (American, born 1966)

From *Voyage of the Beagle*

2007

Fifty-seven pigmented inkjet prints

16 x 12" (40.6 x 30.5 cm) each

The Museum of Modern Art, New York. Fund for the Twenty-First Century

250.



251.



252.



253.



254.



RACHEL HARRISON (American, born 1966)

From *Voyage of the Beagle*

2007

Fifty-seven pigmented inkjet prints

16 x 12" (40.6 x 30.5 cm) each

The Museum of Modern Art, New York. Fund for the Twenty-First Century

255.



256.



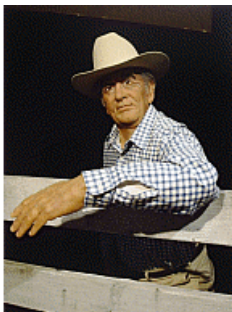
257.



258.



259.



RACHEL HARRISON (American, born 1966)

From *Voyage of the Beagle*

2007

Fifty-seven pigmented inkjet prints

16 x 12" (40.6 x 30.5 cm) each

The Museum of Modern Art, New York. Fund for the Twenty-First Century

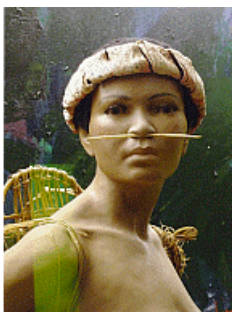
260.



261.



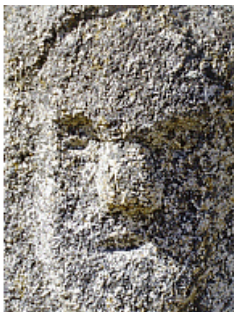
262.



263.



264.



RACHEL HARRISON (American, born 1966)

From *Voyage of the Beagle*

2007

Fifty-seven pigmented inkjet prints

16 x 12" (40.6 x 30.5 cm) each

The Museum of Modern Art, New York. Fund for the Twenty-First Century

265.



266.



267.



268.



269.



RACHEL HARRISON (American, born 1966)

From *Voyage of the Beagle*

2007

Fifty-seven pigmented inkjet prints

16 x 12" (40.6 x 30.5 cm) each

The Museum of Modern Art, New York. Fund for the Twenty-First Century

270.



Touch to begin...

The Pygmalion Complex: Animate and Inanimate Figures

271.



JINDRICH ŠTYRSKÝ (Czech, 1899-1942)

Untitled

1930s

Gelatin silver print

3 1/2 x 3 3/8" (9 x 8.5 cm)

The Museum of Modern Art, New York. Gift of Rudolf Kicken

272.



ANDRÉ KERTÉSZ (American, born Hungary. 1894-1985)

Géza Blattner

1925

Gelatin silver print

3 1/16 x 3 3/16" (7.7 x 8.1 cm)

The Museum of Modern Art, New York. Thomas Walther Collection. Gift of Thomas Walther

273.



LAURA GILPIN (American, 1881-1979)

George William Eggers

1926, printed 1929

Palladium print

4 13/16 x 5 1/2" (12.3 x 14 cm)

Amon Carter Museum, Forth Worth, Texas
Bequest of the artist.

274.



HENRI CARTIER-BRESSON (French, 1908-2004)

Alberto Giacometti in the Galerie Maeght, Paris

1961

Gelatin silver print

14 x 9 7/16" (35.5 x 24 cm)

Fondation Henri Cartier-Bresson, Paris

275.



ANDRÉ KERTÉSZ (American, born Hungary. 1894-1985)

Satiric Dancer

1926

Gelatin silver print

6 5/8 x 4 5/8" (16.8 x 11.7 cm)

Edwynn Houk Gallery, New York

276.



MAN RAY (American, 1890-1976)
Francis Picabia Imitating Rodin's Sculpture of Balzac
1923
Gelatin silver print
9 1/2 x 7 1/16" (24.1 x 17.9 cm)
Richard and Ellen Sandor Family Collection

277.



ROBERT MAPPLETHORPE (American, 1946-1989)
Louise Bourgeois
1982
Gelatin silver print
16 x 20" (40.6 x 50.8 cm)
Robert Mapplethorpe Foundation

278.



HANS BELLMER (German, 1902-1975)
The Doll (Self-Portrait with the Doll)
1934
Gelatin silver print
11 3/4 x 7 3/4" (29.9 x 19.7 cm)
Collection Carla Emil and Rich Silverstein

279.



HANS BELLMER (German, 1902-1975)
"Doll: Variations on the Montage of an Articulated Minor" in *Minotaure* no. 6
1934
Journal
11 15/16 x 9 1/16" (30.3 x 23 cm)
The Museum of Modern Art Library, New York

280.



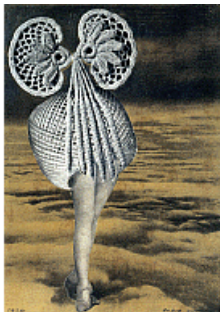
SOPHIE TAEUBER-ARP (Swiss, 1889-1943)
Sophie Taeuber-Arp behind Dada Head
1920
Gelatin silver print
6 7/16 x 4 1/2" (16.3 x 11.5 cm)
Bibliothèque Kandinsky, Centre de Documentation et de Recherche du Musée national d'art moderne, Centre Pompidou, Paris

281.



MAX ERNST (French, born Germany. 1891-1976)
Health through Sports
c. 1920
Gelatin silver print of photomontage and collage
37 13/16 x 23 5/8" (96 x 60 cm)
Kunsthau Zürich, Grafische Sammlung

282.



MAX ERNST (French, born Germany. 1891-1976)
Midnight Passes above the Clouds
1920
Collage of cut gelatin silver prints, and printed reproductions
28 3/4 x 21 5/8" (73 x 55 cm)
Kunsthau Zürich, Grafische Sammlung

283.



HANNAH HÖCH (German, 1889-1978)
Mother
1930
Photomontage with watercolor and magazine illustrations cut out and pasted on paper
10 1/16 x 7 7/8" (25.6 x 20 cm)
Centre Pompidou, Musée national d'art moderne - Centre de création industrielle,
Paris. Purchase, 1967

284.



MAN RAY (American, 1890-1976)
Le Violon d'Ingres
1924
Gelatin silver print mounted on paper
19 x 14 1/2" (48.3 x 36.8 cm)
The Rosalind and Melvin Jacobs Collection

285.



MAN RAY (American, 1890-1976)
Noire et blanche
1926
Gelatin silver print
6 3/4 x 8 7/8" (17.1 x 22.5 cm)
The Museum of Modern Art, New York. Gift of James Thrall Soby

286.



MAN RAY (American, 1890-1976)
 "Mother-of-Pearl Face and Ebony Mask" in *Vogue Paris*
 May 1926
 12 3/4 x 9 1/2" (32.4 x 24.1 cm)
 Collection Steven Manford, Toronto

287.



GILLIAN WEARING (British, born 1963)
Self-Portrait at 17 Years Old
 2003
 Chromogenic color print
 41 x 32" (104.1 x 81.3 cm) (sight)
 The Museum of Modern Art, New York. Acquired through the generosity of The Contemporary Arts Council of The Museum of Modern Art

288.



MAURICE TABARD (French, 1897-1984)
Test for the Film "Culte Vaudou", Exposition 1937
 1936
 Gelatin silver print, with orange foil
 11 9/16 x 9 1/16" (29.3 x 23 cm). Mount: 12 13/16 x 9 15/16" (32.5 x 25.3 cm)
 The Museum of Modern Art, New York. Thomas Walther Collection. Purchase

289.



CLARENCE JOHN LAUGHLIN (American, 1905-1985)
The Eye That Never Sleeps
 1946
 Gelatin silver print
 12 3/8 x 8 3/4" (31.4 x 22.2 cm)
 The Museum of Modern Art, New York. Purchase

290.



HANS BELLMER (German, 1902-1975)
The Doll
 1935-37
 Gelatin silver print
 9 1/2 x 9 5/16" (24.1 x 23.7 cm)
 The Museum of Modern Art, New York. Samuel J. Wagstaff, Jr. Fund

291.



ANDRÉ KERTÉSZ (American, born Hungary. 1894-1985)

Marionnettes de Pilsner

1929

Gelatin silver print

9 5/8 x 7 7/8" (24.4 x 20 cm)

The Museum of Modern Art, New York. Purchase

292.



HORST P. HORST (American, born Germany. 1906-1999)

Costume for Salvador Dalí's "Dream of Venus"

1939

Gelatin silver print

10 x 7 1/2" (25.4 x 19 cm)

The Museum of Modern Art, New York. Gift of James Thrall Soby

293.



MAN RAY (American, 1890-1976)

Coat Stand

1920

Gelatin silver print

15 7/8 x 10 9/16" (40.4 x 26.9 cm)

Centre Pompidou, Musée national d'art moderne - Centre de création industrielle, Paris. Purchase 1996

294.



MAN RAY (American, 1890-1976)

MARCEL DUCHAMP (American, born France. 1887-1968)

"dadaphoto" in *New York Dada*

1921

Journal

14 3/4 x 10" (37.5 x 25.4 cm)

Francis M. Naumann Fine Art, New York

295.



IWAO YAMAWAKI (Japanese, 1898-1987)

Articulated Mannequin

1931

Gelatin silver print

9 1/16 x 6 13/16" (23 x 17.3 cm)

The Museum of Modern Art, New York. Thomas Walther Collection. Gift of Thomas Walther

296.



WALKER EVANS (American, 1903-1975)

Votive Candles, New York City

1929-30

Gelatin silver print

8 1/2 x 6 15/16" (21.6 x 17.7 cm). Mount: 8 1/2 x 6 15/16" (21.6 x 17.7 cm)

The Museum of Modern Art, New York. Thomas Walther Collection. Purchase

297.



EDWARD WESTON (American, 1886-1958)

Rubber Dummies, Metro Goldwyn Mayer Studios, Hollywood

1939

Gelatin silver print

7 9/16 x 9 5/8" (19.3 x 24.4 cm)

The Museum of Modern Art, New York. Gift of Edward Steichen

298.



CLAUDE CAHUN (LUCY SCHWOB) (French, 1894-1954)

Untitled

c. 1925

Gelatin silver print

4 1/16 x 2 15/16" (10.3 x 7.4 cm)

The Museum of Modern Art, New York. Thomas Walther Collection. Purchase

299.



HANS FINSLER (Swiss, 1891-1972)

Gropius and Moholy-Nagy as Goethe and Schiller

1925

Gelatin silver print

9 1/8 x 6 3/4" (23.2 x 17.2 cm)

Kunsthau Zürich, Fotosammlung

300.



ROBERT MAPPLETHORPE (American, 1946-1989)

Untitled

1973

Dye diffusion transfer prints (Polaroids), in painted plastic mounts and acrylic frame
10 7/8 x 11 5/16" (27.6 x 28.7 cm)

Solomon R. Guggenheim Museum, New York Gift, The Robert Mapplethorpe Foundation, 93.4276

301.



HERBERT BAYER (American, born Austria. 1900-1985)

Humanly Impossible

1932

Gelatin silver print

15 3/8 x 11 9/16" (39 x 29.3 cm)

The Museum of Modern Art, New York. Thomas Walther Collection. Purchase

302.



JOHANNES THEODOR BAARGELD (ALFRED EMANUEL FERDINAND GRUENWALD) (German, 1892-1927)

Typical Vertical Mess as Depiction of the Dada Baargeld

1920

Photomontage

14 5/8 x 12 3/16" (37.1 x 31 cm)

Kunsthau Zürich; Grafische Sammlung

303.



JOHANNES THEODOR BAARGELD (ALFRED EMANUEL FERDINAND GRUENWALD) (German, 1892-1927)

Venus at the Game of Kings

1920

Photomontage, collage, ink, and pencil on paper

14 9/16 x 10 13/16" (37 x 27.5 cm)

Kunsthau Zürich, Grafische Sammlung

The Performing Body as Sculptural Object

304.



CLAES OLDENBURG (American, born Sweden 1929)

Claes Oldenburg: Projects for Monuments

1967

Offset lithograph

34 11/16 x 22 1/2" (88.0 x 57.2 cm)

The Museum of Modern Art, New York. Gift of Barbara Pine

305.



YVES KLEIN (French, 1928-1962)

Yves Klein's Leap into the Void

1960

Gelatin silver print (photograph by Harry Shunk and János Kender)

13 11/16 x 10 7/8" (34.8 x 27.6 cm)

The Museum of Modern Art, New York. David H. McAlpin Fund

306.



YVES KLEIN (French, 1928-1962)

Dimanche—Le journal d'un seul jour, November 27, 1960

1960

Newspaper

22 x 15" (55.9 x 38.1 cm)

The Museum of Modern Art Library, New York

307.



YAYOI KUSAMA (Japanese, born 1929)

Sex Food Obsession & Net Accumulation

1959-63

Gelatin silver print (photograph, by Peter Moore, of a photocollage by Kusama)

10 x 8 1/16" (25.4 x 20.5 cm)

Collection Jon and Joanne Hendricks

308.



ROBERT WHITMAN (American, born 1935)

Flower

1963

Gelatin silver print (photograph by Robert R. McElroy)

8 1/16 x 9 15/16" (20.4 x 25.3 cm)

Collection Jon and Joanne Hendricks

309.



CLAES OLDENBURG (American, born Sweden 1929)

Autobodys

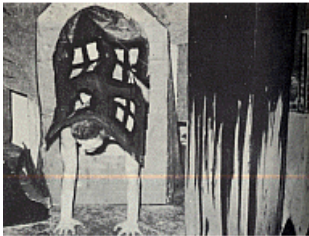
1963

Gelatin silver print (photograph by Julian Wasser)

7 5/16 x 9 1/2" (18.5 x 24.2 cm)

Collection Jon and Joanne Hendricks

310.



RED GROOMS (American, born 1937)

The Burning Building

1959

Gelatin silver print (photograph by Max Baker)

8 1/16 x 10 1/4" (20.4 x 26 cm)

Collection Jon and Joanne Hendricks

311.



JIM DINE (American, born 1935)

The Car Crash

1960

Gelatin silver print (photograph by Robert R. McElroy)

8 1/16 x 9 15/16" (20.4 x 25.3 cm)

Collection Jon and Joanne Hendricks

312.



ROBERT WHITMAN (American, born 1935)

Water

1963

Gelatin silver print (photograph by Michael Asher)

7 x 10 3/16" (17.8 x 25.9 cm)

Collection Jon and Joanne Hendricks

313.



MILAN KNÍŽÁK (Czech, born 1940)

Small Environments on the Street

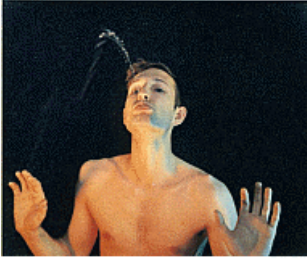
1962-63

Collage of gelatin silver prints, safety pin, and staples on paper

11 11/16 x 8 1/4" (29.7 x 21 cm)

Collection Jon and Joanne Hendricks

314.



BRUCE NAUMAN (American, born 1941)
Self-Portrait as a Fountain
1966-67/1970/2007
Inkjet print (originally chromogenic color print), printed 2010
20 1/16 x 23 3/4" (50.9 x 60.3 cm)
Museum of Contemporary Art, Chicago. Gerald S. Elliott Collection

315.



BRUCE NAUMAN (American, born 1941)
Feet of Clay
1966-67/1970/2007
Inkjet print (originally chromogenic color print), printed 2010
21 3/4 x 23 1/2" (55.2 x 59.7 cm)
Museum of Contemporary Art, Chicago. Gerald S. Elliott Collection

316.



BRUCE NAUMAN (American, born 1941)
Bound to Fail
1966-67/1970/2007
Inkjet print (originally chromogenic color print), printed 2010
19 7/8 x 23 5/8" (50.5 x 60 cm)
Museum of Contemporary Art, Chicago. Gerald S. Elliott Collection

317.



BRUCE NAUMAN (American, born 1941)
Waxing Hot
1966-67/1970/2007
Inkjet print (originally chromogenic color print), printed 2010
19 15/16 x 19 15/16" (50.6 x 50.6 cm)
Museum of Contemporary Art, Chicago. Gerald S. Elliott Collection

318.



MARCEL DUCHAMP (American, born France. 1887-1968)
Tonsure
1921
Gelatin silver print (photograph by Man Ray)
4 3/4 x 3 1/2" (12.1 x 8.9 cm)
Private Collection, courtesy Sean Kelly Gallery, New York

319.



ROBERT MORRIS (American, born 1931)

I-Box

1962

Painted plywood cabinet, Sculptmetal, and gelatin silver print
19 x 13 x 1 1/2" (48.3 x 33 x 3.8 cm)

Collection Barbara Bertozzi Castelli

320.



GILBERT & GEORGE (British)

GILBERT PROESCH (British, born Italy 1943)

GEORGE PASSMORE (British, born 1942)

Great Expectations

1972

Dye transfer print

11 9/16 x 11 1/2" (29.4 x 29.2 cm)

The Museum of Modern Art, New York. Art & Project/Depot VBVR

321.



ERWIN WURM (Austrian, born 1954)

One Minute Sculptures

1997-98

Chromogenic color print

17 11/16 x 11 13/16" (45 x 30 cm)

Centre Pompidou, Musée national d'art moderne - Centre de création industrielle, Paris. Purchase, 2000

322.



ERWIN WURM (Austrian, born 1954)

One Minute Sculptures

1997-98

Chromogenic color print

17 11/16 x 11 13/16" (45 x 30 cm)

Centre Pompidou, Musée national d'art moderne - Centre de création industrielle, Paris. Purchase, 2000

323.



ERWIN WURM (Austrian, born 1954)

One Minute Sculptures

1997-98

Chromogenic color print

17 11/16 x 11 13/16" (45 x 30 cm)

Centre Pompidou, Musée national d'art moderne - Centre de création industrielle, Paris. Purchase, 2000

324.



ERWIN WURM (Austrian, born 1954)

One Minute Sculptures

1997-98

Chromogenic color print

17 11/16 x 11 13/16" (45 x 30 cm)

Centre Pompidou, Musée national d'art moderne - Centre de création industrielle, Paris. Purchase, 2000

325.



ERWIN WURM (Austrian, born 1954)

One Minute Sculptures

1997-98

Chromogenic color print

17 11/16 x 11 13/16" (45 x 30 cm)

Centre Pompidou, Musée national d'art moderne - Centre de création industrielle, Paris. Purchase, 2000

326.



ERWIN WURM (Austrian, born 1954)

One Minute Sculptures

1997-98

Chromogenic color print

17 11/16 x 11 13/16" (45 x 30 cm)

Centre Pompidou, Musée national d'art moderne - Centre de création industrielle, Paris. Purchase, 2000

327.



ERWIN WURM (Austrian, born 1954)

One Minute Sculptures

1997-98

Chromogenic color print

17 11/16 x 11 13/16" (45 x 30 cm)

Centre Pompidou, Musée national d'art moderne - Centre de création industrielle, Paris. Purchase, 2000

328.



ERWIN WURM (Austrian, born 1954)

One Minute Sculptures

1997-98

Chromogenic color print

17 11/16 x 11 13/16" (45 x 30 cm)

Centre Pompidou, Musée national d'art moderne - Centre de création industrielle, Paris. Purchase, 2000

329.



ERWIN WURM (Austrian, born 1954)

One Minute Sculptures

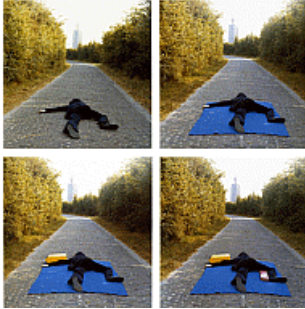
1997-98

Chromogenic color print

17 11/16 x 11 13/16" (45 x 30 cm)

Centre Pompidou, Musée national d'art moderne - Centre de création industrielle, Paris. Purchase, 2000

330.



BAS JAN ADER (Dutch, 1942-1975)

On the Road to a New Neo Plasticism, Westkapelle, Holland

1971

Chromogenic color prints, printed 2010

11 13/16 x 11 13/16" (30 x 30 cm) each

Museum Boijmans Van Beuningen, Rotterdam

331.



ROBIN RHODE (South African, born 1976)

Stone Flag

2004

Chromogenic color prints

12 1/16 x 18 1/16" (30.6 x 45.8 cm) each

The Museum of Modern Art, New York. Fund for the Twenty-First Century

332.



VALIE EXPORT (Austrian, born 1940)

Intersection from the series *Body Configurations*

1972

Gelatin silver print

23 9/16 x 15 7/8" (59.9 x 40.4 cm)

The Museum of Modern Art, New York. Acquired through the generosity of Agnes Gund

333.



DENNIS OPPENHEIM (American, born 1938)

Parallel Stress

1970

Chromogenic color prints, collage, and text on paper and board

7'6" x 5'11/16" (228.6 x 154.2 cm)

Collection the artist

334.



CHARLES RAY (American, born 1953)

Plank Piece I and II

1973

Gelatin silver prints, printed 1992

30 x 40" (76.3 x 101.7 cm)

The Museum of Modern Art, New York. Samuel J. Wagstaff, Jr. Fund and Purchase

335.



JOSEPH BEUYS (German, 1921-1986)

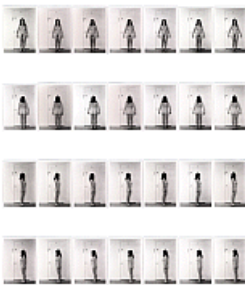
Iphigenia/Titus Andronicus

1984

Photographic negatives stamped with brown paint between glass plates in iron frame
28 1/8 x 21 9/16" (71.4 x 54.8 cm)

The Museum of Modern Art, New York. Gift of Edition Schellmann, Munich and New York

336.



ELEANOR ANTIN (American, born 1935)

The Last Seven Days from Carving: A Traditional Sculpture

1972

Gelatin silver prints and wall text, printed 1999

7 x 5" (17.8 x 12.7 cm) each

Courtesy the artist and Ronald Feldman Fine Arts, New York

337.



ANA MENDIETA (American, born Cuba. 1948-1985)

Image from Yagul

1973

Lifetime color photograph

19 x 12 1/2" (48.3 x 31.8 cm)

Glenstone

338.



ANA MENDIETA (American, born Cuba. 1948-1985)

Tree of Life

1976

Lifetime color photograph

20 x 13 1/4" (50.8 x 33.7 cm)

Courtesy The Collection Raquelín Mendieta Family Trust and Galerie Lelong, New York

339.



GÜNTER BRUS (Austrian, born 1938)

Untitled

1965

Mixed media on board mounted on wood

30 5/16 x 30 5/16" (77 x 77 cm)

Scottish National Gallery of Modern Art, Edinburgh

340.



HANNAH WILKE (American, 1940-1993)

S.O.S.—Starification Object Series

1974-82

Gelatin silver prints with chewing gum sculptures

40 x 58 1/2 x 2 1/4" (101.6 x 148.6 x 5.7 cm)

The Museum of Modern Art, New York. Purchase