

The Museum of Modern Art

Tim Burton

The Museum of Modern Art, New York November 22, 2009-April 26, 2010

3rd Floor, Special Exhibitions

Titus theater lobby galleries



TIM BURTON American, born 1958
Saucer and aliens, 1970-1978
Oil and acrylic on canvas board
24 x 30" (61 x 76.2 cm)
Private collection



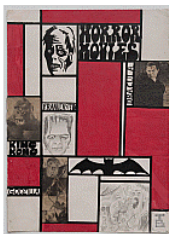
TIM BURTON American, born 1958
Untitled (Vincent Price), 1970-1978
Pencil on paper
11 x 8 1/2" (27.9 x 21.6 cm)
Private collection



TIM BURTON American, born 1958
Untitled (Figure drawing with monster in the corner), 1970s
Pen and ink on paper
24 x 20" (61 x 50.8 cm)
Private collection



TIM BURTON American, born 1958
The Island of Dr. Agor 1971
Houdini: The Untold Story 1971
Untitled (Tim's dreams) 1972
Part 1: Horror film creatures
Part 2: Swashbuckler duel
Part 3: Silent films
Part 4: Pool room challenge, 1971-1972
Super 8mm film transferred to digital video, silent, approx. 14 min.
total
Private collection



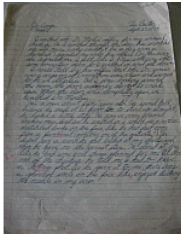
TIM BURTON American, born 1958
Horror Movies, c. 1977
Pen and ink, pencil, collage elements and marker on paper board
20 x 14" (50.8 x 35.6 cm)
Private collection



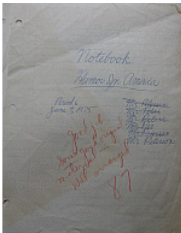
UNKNOWN ARTIST
Burbank Police Boy's Band cover, 1973
Album cover
15 x 15" (38.1 x 38.1 cm)
Private collection



TIM BURTON American, born 1958
Crush Litter sign, c. 1973
 Paint on metal
 24 x 36 1/2" (61 x 92.7 cm)
 Private collection



TIM BURTON American, born 1958
Burton high school paper, 1974
 Ink on paper
 11 x 8 1/2" (27.9 x 21.6 cm)
 Private collection



TIM BURTON American, born 1958
Humor in America assignment, 1975
 Ink and pencil on paper
 10 x 8" (25.4 x 20.3 cm)
 Private collection



TIM BURTON American, born 1958
Untitled (Boxers), c. 1975
 Pencil on paper
 11 x 17" (27.9 x 43.2 cm)
 Private collection



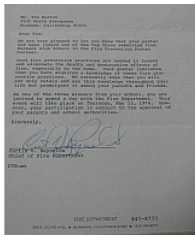
TIM BURTON American, born 1958
Untitled (Alien sketch), 1975-1979
 Pencil on paper
 17 x 12" (43.2 x 30.5 cm)
 Private collection



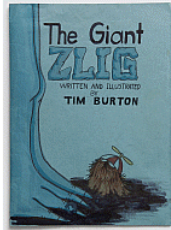
TIM BURTON American, born 1958
Untitled (Doctor cartoon), c. 1975
 Pencil on paper
 11 x 17" (27.9 x 43.2 cm)
 Private collection



TIM BURTON American, born 1958
Untitled (Painter), c. 1975
 Pencil on paper
 11 x 17" (27.9 x 43.2 cm)
 Private collection



TIM BURTON American, born 1958
Letter from the Burbank Fire Department, 1976
 Ink on paper, typewritten
 11 x 8 1/2" (27.9 x 21.6 cm)
 Private collection



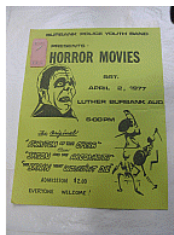
TIM BURTON American, born 1958
The Giant Zlig, 1976
 Pen and ink and marker on paper
 Cover: 14 x 10" (35.6 x 25.4 cm)
 Sheet: 12 1/4 x 18 3/4" (31.1 x 47.6 cm)
 Cover and 3 open spreads displayed in vitrine
 Private collection



TIM BURTON American, born 1958
Cal Arts class notes, c. 1976-1979
 Sketchbook
 14 3/8 x 11 1/2" (36.5 x 29.2 cm)
 Private collection



TIM BURTON American, born 1958
Cal Arts class sketches, c. 1976
 Sketchbook
 17 x 14" (43.2 x 35.6 cm)
 Private collection



TIM BURTON American, born 1958
Burbank Police Youth Band Presents Horror Movies flyer, 1977
 Ink on colored paper
 11 1/2 x 8" (29.2 x 20.3 cm)
 Private collection



TIM BURTON American, born 1958
List of films, 1977
 Ink on paper, Three pgs.
 Three pieces, each: 10 x 8" (25.4 x 20.3 cm)
 Private collection



TIM BURTON American, born 1958
The Burbank City Employee newsletter, 1977
 Ink on paper
 8 x 10" (20.3 x 25.4 cm)
 Private collection



TIM BURTON American, born 1958
Untitled (King and octopus animation) c. 1978–79
Luau (excerpt) 1980
Doctor of Doom (excerpt) 1980, c. 1978–1980
 16mm film transferred to digital video, sound, approx. 14 min. total
 Private collection



TIM BURTON American, born 1958
Stalk of the Celery Monster, 1979
 16 mm film transferred to digital video (black and white, silent version),
 4 min. 9 sec.
 Private collection



TIM BURTON American, born 1958
Untitled (Swamp monster and man in bathtub), 1979–1982
 Pencil and colored pencil on paper
 10 1/2 x 12 3/4" (26.7 x 32.4 cm)
 Private collection



TIM BURTON American, born 1958
Untitled (Charlie Horse), 1979–1982
 Pencil on paper
 10 1/2 x 12 3/4" (26.7 x 32.4 cm)
 Private collection



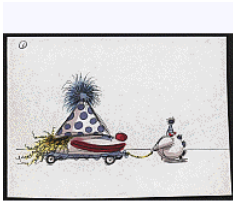
TIM BURTON American, born 1958
Untitled (Monkey holding up a man), 1979–1982
 Pencil and colored pencil on paper
 10 1/2 x 12 3/4" (26.7 x 32.4 cm)
 Private collection



TIM BURTON American, born 1958
Untitled (The Insect), 1979–1982
 Pencil and colored pencil on paper
 10 1/2 x 12 3/4" (26.7 x 32.4 cm)
 Private collection



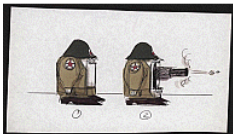
TIM BURTON American, born 1958
Untitled (Miscellaneous), 1980
 Pen and ink, watercolor and colored pencil on paper
 9 x 8" (22.9 x 20.3 cm)
 Private collection



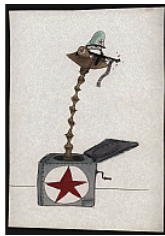
TIM BURTON American, born 1958
Untitled (Miscellaneous), 1980
 Pen and ink, watercolor wash and colored pencil on paper
 6 x 8" (15.2 x 20.3 cm)
 Private collection



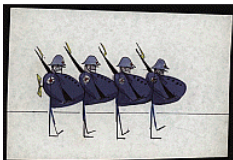
TIM BURTON American, born 1958
Untitled (Miscellaneous), 1980
 Pen and ink, watercolor wash and colored pencil on paper
 6 x 9" (15.2 x 22.9 cm)
 Private collection



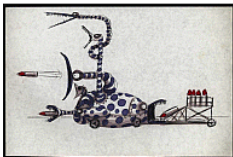
TIM BURTON American, born 1958
Untitled (Miscellaneous), 1980
 Pen and ink, watercolor wash and colored pencil on paper
 5 x 9" (12.7 x 22.9 cm)
 Private collection



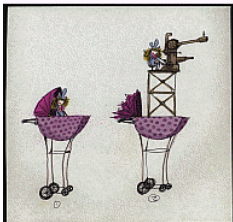
TIM BURTON American, born 1958
Untitled (Miscellaneous), 1980
 Pen and ink, watercolor wash and colored pencil on paper
 10 x 7" (25.4 x 17.8 cm)
 Private collection



TIM BURTON American, born 1958
Untitled (Miscellaneous), 1980
 Pen and ink, watercolor wash and colored pencil on paper
 6 x 8" (15.2 x 20.3 cm)
 Private collection



TIM BURTON American, born 1958
Untitled (Miscellaneous), 1980
 Pen and ink and watercolor wash on paper
 7 x 11" (17.8 x 27.9 cm)
 Private collection



TIM BURTON American, born 1958
Untitled (Miscellaneous), 1980
 Pen and ink, watercolor wash and colored pencil on paper
 10 x 10" (25.4 x 25.4 cm)
 Private collection



TIM BURTON American, born 1958
Untitled (Miscellaneous), 1980
 Pen and ink, watercolor wash, colored pencil and correction fluid on paper
 10 x 10" (25.4 x 25.4 cm)
 Private collection



TIM BURTON American, born 1958
Untitled (Miscellaneous), 1980
 Colored pencil on paper
 8 x 7" (20.3 x 17.8 cm)
 Private collection



TIM BURTON American, born 1958
Untitled (Miscellaneous), 1980
 Ink and colored pencil on paper
 6 x 9" (15.2 x 22.9 cm)
 Private collection



TIM BURTON American, born 1958
Untitled (Miscellaneous), 1980
 Pen and ink and colored pencil on paper
 11 x 11" (27.9 x 27.9 cm)
 Private collection



TIM BURTON American, born 1958
Untitled (Miscellaneous), 1980
 Colored pencil on paper
 10 x 10" (25.4 x 25.4 cm)
 Private collection



TIM BURTON American, born 1958
Untitled (Miscellaneous), 1980
 Pen and ink and watercolor wash on paper
 8 x 13" (20.3 x 33 cm)
 Private collection



TIM BURTON American, born 1958
Untitled (Miscellaneous), 1980
 Pen and ink, watercolor wash, colored pencil and collage elements on paper
 10 x 10" (25.4 x 25.4 cm)
 Private collection



TIM BURTON American, born 1958
Untitled (Miscellaneous), 1980
 Pen and ink and colored pencil on paper
 13 x 16" (33 x 40.6 cm)
 Private collection



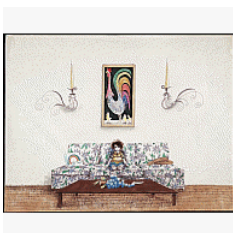
TIM BURTON American, born 1958
Untitled (Trick and Treat), 1980
 Pen and ink, marker and colored pencil on paper
 13 x 16" (33 x 40.6 cm)
 Private collection



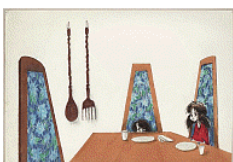
TIM BURTON American, born 1958
Untitled (Trick or Treat), 1980
 Pen and ink, colored pencil and marker on paper
 11 1/4 x 15 1/2" (28.6 x 39.4 cm)
 Private collection



TIM BURTON American, born 1958
Untitled (Trick or Treat), 1980
 Pen and ink, watercolor wash, colored pencil, marker and collage elements on paper board
 13 x 20" (33 x 50.8 cm)
 Private collection



TIM BURTON American, born 1958
Untitled (Trick or Treat), 1980
 Pen and ink, marker and colored pencil on paper
 12 x 16" (30.5 x 40.6 cm)
 Private collection



TIM BURTON American, born 1958
Untitled (Trick or Treat), 1980
 Pen and ink, marker and colored pencil on paper
 10 x 15" (25.4 x 38.1 cm)
 Private collection



TIM BURTON American, born 1958
Untitled (Trick or Treat), 1980
 Pen and ink and watercolor wash on paper
 15 x 12" (38.1 x 30.5 cm)
 Private collection



TIM BURTON American, born 1958
Untitled (Trick or Treat), 1980
 Pen and ink, marker and colored pencil on paper
 12 x 15" (30.5 x 38.1 cm)
 Private collection



TIM BURTON American, born 1958
Untitled (Trick or Treat), 1980
 Pen and ink, marker and colored pencil on paper
 12 x 14" (30.5 x 35.6 cm)
 Private collection



TIM BURTON American, born 1958
Untitled (Trick or Treat), 1980
 Pen and ink, watercolor wash, marker, colored pencil and collage elements on paper board
 15 x 15" (38.1 x 38.1 cm)
 Private collection



TIM BURTON American, born 1958
Untitled (Trick or Treat), 1980
 Pen and ink and marker on paper
 16 x 11" (40.6 x 27.9 cm)
 Private collection



TIM BURTON American, born 1958
Untitled (Trick or Treat), 1980
 Pen and ink and watercolor wash on paper
 11 x 8" (27.9 x 20.3 cm)
 Private collection



TIM BURTON American, born 1958
Untitled (Trick or Treat), 1980
 Pen and ink and marker on paper
 10 x 8" (25.4 x 20.3 cm)
 Private collection



TIM BURTON American, born 1958
Untitled (Trick or Treat), 1980
 Pen and ink, marker and colored pencil on paper
 14 x 10" (35.6 x 25.4 cm)
 Private collection



TIM BURTON American, born 1958
Untitled (Trick or Treat), 1980
 Pen and ink, marker, colored pencil and correction fluid on paper
 10 x 9" (25.4 x 22.9 cm)
 Private collection



TIM BURTON American, born 1958
Untitled (Trick or Treat), 1980
 Pen and ink, marker and colored pencil on paper
 12 x 8" (30.5 x 20.3 cm)
 Private collection



TIM BURTON American, born 1958
Untitled (Trick or Treat), 1980
 Pen and ink, marker and colored pencil on paper
 11 x 7" (27.9 x 17.8 cm)
 Private collection



TIM BURTON American, born 1958
Untitled (Trick or Treat), 1980
 Pen and ink, watercolor wash, colored pencil, marker and collage elements on paper
 11 x 16" (27.9 x 40.6 cm)
 Private collection



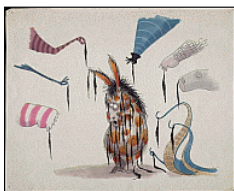
TIM BURTON American, born 1958
Untitled (Trick or Treat), 1980
 Pen and ink, marker and colored pencil on paper
 10 x 16" (25.4 x 40.6 cm)
 Private collection



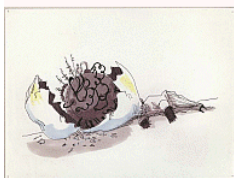
TIM BURTON American, born 1958
Untitled (Trick or Treat), 1980
 Pen and ink, marker and colored pencil on paper
 10 x 9" (25.4 x 22.9 cm)
 Private collection



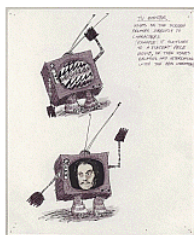
TIM BURTON American, born 1958
Untitled (Trick or Treat), 1980
 Pen and ink and marker on paper
 13 x 10" (33 x 25.4 cm)
 Private collection



TIM BURTON American, born 1958
Untitled (Trick or Treat), 1980
 Pen and ink, marker, colored pencil and correction fluid on paper
 12 x 14" (30.5 x 35.6 cm)
 Private collection



TIM BURTON American, born 1958
Untitled (Trick or Treat), 1980
 Pen and ink and marker on paper
 8 x 10" (20.3 x 25.4 cm)
 Private collection



TIM BURTON American, born 1958
Untitled (Trick or Treat), 1980
 Pen and ink, marker and collage elements on paper
 11 x 9" (27.9 x 22.9 cm)
 Private collection



TIM BURTON American, born 1958
Untitled (Trick or Treat), 1980
 Pen and ink and marker on paper
 10 x 9" (25.4 x 22.9 cm)
 Private collection



TIM BURTON American, born 1958
Untitled (Trick or Treat), 1980
 Pen and ink, watercolor wash and marker on paper
 10 x 7" (25.4 x 17.8 cm)
 Private collection



TIM BURTON American, born 1958
Untitled (Trick or Treat), 1980
 Pen and ink, marker and pastel on paper
 9 x 9" (22.9 x 22.9 cm)
 Private collection



TIM BURTON American, born 1958
Untitled (Trick or Treat), 1980
 Pen and ink, marker and colored pencil on paper
 8 x 7" (20.3 x 17.8 cm)
 Private collection



TIM BURTON American, born 1958
Untitled (Trick or Treat), 1980
 Pen and ink, marker and colored pencil on paper
 9 x 12" (22.9 x 30.5 cm)
 Private collection



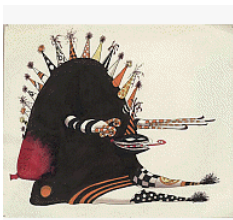
TIM BURTON American, born 1958
Untitled (Trick or Treat), 1980
 Pen and ink, marker and colored pencil on paper
 12 x 8" (30.5 x 20.3 cm)
 Private collection



TIM BURTON American, born 1958
Untitled (Trick or Treat), 1980
 Pen and ink, marker, colored pencil and collage elements on paper board
 11 x 13" (27.9 x 33 cm)
 Private collection



TIM BURTON American, born 1958
Untitled (Trick or Treat), 1980
 Pen and ink, marker and colored pencil on paper
 12 x 16" (30.5 x 40.6 cm)
 Private collection



TIM BURTON American, born 1958
Untitled (Trick or Treat), 1980
 Pen and ink and marker on paper
 11 x 13" (27.9 x 33 cm)
 Private collection



TIM BURTON American, born 1958
Untitled (Trick or Treat), 1980
 Pen and ink, marker and correction fluid on paper
 10 x 13" (25.4 x 33 cm)
 Private collection



TIM BURTON American, born 1958
Untitled (Miscellaneous), 1980-1981
 Pen and ink and watercolor wash on paper
 13 x 16" (33 x 40.6 cm)
 Private collection



TIM BURTON American, born 1958
Untitled (Miscellaneous), 1980-1981
 Pastel on black background on paper
 11 x 16" (27.9 x 40.6 cm)
 Private collection



TIM BURTON American, born 1958
Untitled (Miscellaneous), 1980-1982
 Pen and ink, watercolor wash, watercolor and pastel on paper
 11 x 10" (27.9 x 25.4 cm)
 Private collection



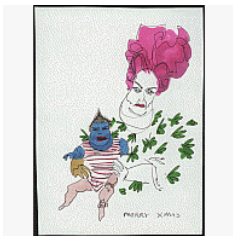
TIM BURTON American, born 1958
Untitled (Miscellaneous), 1980-1982
 Pen and ink and watercolor on paper
 10 x 12" (25.4 x 30.5 cm)
 Private collection



TIM BURTON American, born 1958
Untitled (Girl Series), 1980-1984
 Pen and ink, watercolor and colored pencil on paper
 14 x 9" (35.6 x 22.9 cm)
 Private collection



TIM BURTON American, born 1958
Untitled (Man in straitjacket), c. 1972
 Ink on paper
 11 x 8 1/2" (27.9 x 21.6 cm)
 Private collection



TIM BURTON American, born 1958
Untitled (Miscellaneous), 1980-1984
 Pen and ink, watercolor wash and colored pencil on paper
 9 x 6" (22.9 x 15.2 cm)
 Private collection



TIM BURTON American, born 1958
Untitled (Miscellaneous), 1980-1984
 Pen and ink, watercolor wash and colored pencil on paper
 9 x 7" (22.9 x 17.8 cm)
 Private collection



TIM BURTON American, born 1958
Untitled (Miscellaneous), 1980-1984
 Pen and ink, watercolor wash, watercolor and colored pencil on paper
 12 x 8" (30.5 x 20.3 cm)
 Private collection



TIM BURTON American, born 1958
Untitled (Miscellaneous), 1980-1984
 Pen and ink, watercolor wash and colored pencil on paper
 10 x 9" (25.4 x 22.9 cm)
 Private collection



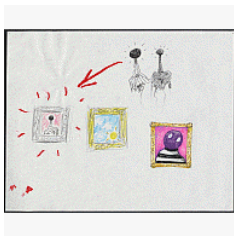
TIM BURTON American, born 1958
Untitled (Miscellaneous), 1980-1984
 Pen and ink on paper
 16 x 13" (40.6 x 33 cm)
 Private collection



TIM BURTON American, born 1958
Untitled (Miscellaneous), 1980-1984
 Pen and ink on paper
 13 x 9" (33 x 22.9 cm)
 Private collection



TIM BURTON American, born 1958
Untitled (Miscellaneous), 1980-1984
 Pen and ink on paper
 18 x 11" (45.7 x 27.9 cm)
 Private collection



TIM BURTON American, born 1958
Untitled (Miscellaneous), 1980-1984
 Pen and ink on paper
 11 x 14" (27.9 x 35.6 cm)
 Private collection



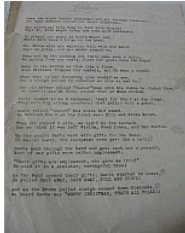
TIM BURTON American, born 1958
Untitled (Miscellaneous), 1980-1984
 Pen and ink on paper
 6 1/4 x 12 1/4" (15.9 x 31.1 cm)
 Private collection



TIM BURTON American, born 1958
Early 80s sketchbook, c. 1980-1985
 Sketchbook
 8 1/2 x 5 1/2" (21.6 x 14 cm)
 Private collection



TIM BURTON American, born 1958
Notes from pirates project, c. 1980
 Sketchbook
 11 x 8 7/8" (27.9 x 22.5 cm)
 Private collection



TIM BURTON American, born 1958
The Night Before Christmas poem, Burbank version, 1980-1985
 Ink on paper, typewritten
 11 x 8 1/2" (27.9 x 21.6 cm)
 Private collection



TIM BURTON American, born 1958
Untitled (Cartoons), 1980-1986
 Pencil on paper
 11 x 17" (27.9 x 43.2 cm)
 Private collection



TIM BURTON American, born 1958
Untitled (Cartoons), 1980-1986
 Pencil on paper
 13 x 16" (33 x 40.6 cm)
 Private collection



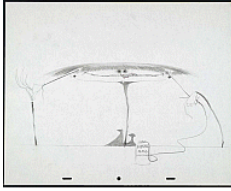
TIM BURTON American, born 1958
Untitled (Cartoons), 1980-1986
 Pencil on paper
 10 x 13" (25.4 x 33 cm)
 Private collection



TIM BURTON American, born 1958
Untitled (Cartoons), 1980-1986
 Pencil on paper
 13 x 16" (33 x 40.6 cm)
 Private collection



TIM BURTON American, born 1958
Untitled (Cartoons), 1980-1986
 Pencil on paper
 13 x 9" (33 x 22.9 cm)
 Private collection



TIM BURTON American, born 1958
Untitled (Cartoons), 1980-1986
 Pencil and colored pencil on paper
 13 x 16" (33 x 40.6 cm)
 Private collection



TIM BURTON American, born 1958
Untitled (Cartoons), 1980-1986
 Pencil and colored pencil on paper
 11 x 7" (27.9 x 17.8 cm)
 Private collection



TIM BURTON American, born 1958
Untitled (Cartoons), 1980-1986
 Pen and ink on paper
 11 x 9" (27.9 x 22.9 cm)
 Private collection



TIM BURTON American, born 1958
Untitled (Cartoons), 1980-1986
 Pencil on paper
 13 x 16" (33 x 40.6 cm)
 Private collection



TIM BURTON American, born 1958
Untitled (Cartoons), 1980-1986
 Pencil on paper
 13 x 16" (33 x 40.6 cm)
 Private collection



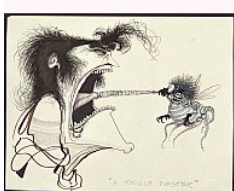
TIM BURTON American, born 1958
Untitled (Cartoons), 1980-1986
 Pencil on paper
 13 x 16" (33 x 40.6 cm)
 Private collection



TIM BURTON American, born 1958
Untitled (Cartoons), 1980-1986
 Pencil on paper
 13 x 16" (33 x 40.6 cm)
 Private collection



TIM BURTON American, born 1958
Untitled (Cartoons), 1980-1986
 Pencil and colored pencil on paper
 12 x 16" (30.5 x 40.6 cm)
 Private collection



TIM BURTON American, born 1958
Untitled (Cartoons), 1980-1986
 Pen and ink and watercolor wash on paper
 12 x 15" (30.5 x 38.1 cm)
 Private collection



TIM BURTON American, born 1958
Untitled (Cartoons), 1980-1986
 Pen and ink and watercolor wash on paper
 12 x 16" (30.5 x 40.6 cm)
 Private collection



TIM BURTON American, born 1958
Untitled (Cartoons), 1980-1986
 Pencil and colored pencil on paper
 10 x 15" (25.4 x 38.1 cm)
 Private collection



TIM BURTON American, born 1958
Untitled (Cartoons), 1980-1986
 Pencil and colored pencil on paper
 12 x 16" (30.5 x 40.6 cm)
 Private collection



TIM BURTON American, born 1958
Untitled (Cartoons), 1980-1986
 Pencil and colored pencil on paper
 12 x 16" (30.5 x 40.6 cm)
 Private collection



TIM BURTON American, born 1958
Untitled (Cartoons), 1980-1986
 Pencil on paper
 13 x 16" (33 x 40.6 cm)
 Private collection



TIM BURTON American, born 1958
Untitled (Cartoons), 1980-1986
 Pencil on paper
 13 x 16" (33 x 40.6 cm)
 Private collection



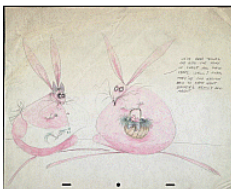
TIM BURTON American, born 1958
Untitled (Cartoons), 1980-1986
 Pencil, colored pencil and ink on paper
 13 x 9" (33 x 22.9 cm)
 Private collection



TIM BURTON American, born 1958
Untitled (Cartoons), 1980-1986
 Pencil and colored pencil on paper
 12 x 16" (30.5 x 40.6 cm)
 Private collection



TIM BURTON American, born 1958
Untitled (Cartoons), 1980-1986
 Pencil on paper
 13 x 16" (33 x 40.6 cm)
 Private collection



TIM BURTON American, born 1958
Untitled (Cartoons), 1980-1986
 Pencil and colored pencil on paper
 12 x 16" (30.5 x 40.6 cm)
 Private collection



TIM BURTON American, born 1958
Untitled (Cartoons), 1980-1986
 Pencil on paper
 13 x 13" (33 x 33 cm)
 Private collection



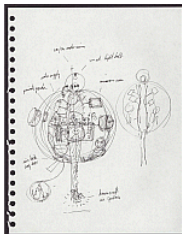
TIM BURTON American, born 1958
Mothera, c. 1980-1988
 Pen and ink and marker on paper
 12 1/2 x 30 1/2" (31.8 x 77.5 cm)
 Private collection



TIM BURTON American, born 1958
Untitled (Creature Series), 1980-1989
 Pen and ink and colored pencil on paper
 9 x 11" (22.9 x 27.9 cm)
 Private collection



TIM BURTON American, born 1958
Untitled (Creature Series), 1980-1989
 Pen and ink and watercolor on paper
 12 x 13" (30.5 x 33 cm)
 Private collection



TIM BURTON American, born 1958
Untitled (Creature Series), 1980-1989
 Pen and ink on paper
 11 x 9" (27.9 x 22.9 cm)
 Private collection



TIM BURTON American, born 1958
Untitled (Creature Series), 1980-1989
 Pen and ink, watercolor wash and colored pencil on paper
 15 x 6" (38.1 x 15.2 cm)
 Private collection



TIM BURTON American, born 1958
Untitled (Boy Series), 1980-1990
 Pen and ink and watercolor on paper
 8 x 4" (20.3 x 10.2 cm)
 Private collection



TIM BURTON American, born 1958
Untitled (Boy Series), 1980-1990
 Pen and ink, watercolor, colored pencil and crayon on paper
 7 x 14" (17.8 x 35.6 cm)
 Private collection



TIM BURTON American, born 1958
Untitled (Boy Series), 1980-1990
 Pen and ink, watercolor and colored pencil on paper
 9 x 16" (22.9 x 40.6 cm)
 Private collection



TIM BURTON American, born 1958
Untitled (Boy Series), 1980-1990
 Pen and ink, watercolor wash and colored pencil on paper
 9 x 6" (22.9 x 15.2 cm)
 Private collection



TIM BURTON American, born 1958
Untitled (Boy Series), 1980-1990
 Pen and ink and watercolor wash on paper
 9 x 6" (22.9 x 15.2 cm)
 Private collection



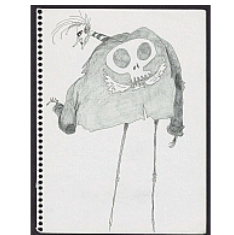
TIM BURTON American, born 1958
Untitled (Boy Series), 1980-1990
 Pen and ink and watercolor wash on paper
 10 x 10" (25.4 x 25.4 cm)
 Private collection



TIM BURTON American, born 1958
Untitled (Boy Series), 1980-1990
 Pen and ink, marker and watercolor on paper
 10 x 14" (25.4 x 35.6 cm)
 Private collection



TIM BURTON American, born 1958
Untitled (Boy Series), 1980-1990
 Pen and ink, watercolor wash and colored pencil on paper
 9 x 6" (22.9 x 15.2 cm)
 Private collection



TIM BURTON American, born 1958
Untitled (Boy Series), 1980-1990
 Pen and ink and pencil on paper
 12 x 9" (30.5 x 22.9 cm),
 Private collection



TIM BURTON American, born 1958
Untitled (Boy Series), 1980-1990
 Pen and ink, watercolor and crayon on paper
 12 x 12" (30.5 x 30.5 cm)
 Private collection



TIM BURTON American, born 1958
Untitled (Boy Series), 1980-1990
 Pen and ink on paper
 14 x 11" (35.6 x 27.9 cm)
 Private collection



TIM BURTON American, born 1958
Untitled (Boy Series), 1980-1990
 Pen and ink and watercolor wash on paper
 10 x 13" (25.4 x 33 cm)
 Private collection



TIM BURTON American, born 1958
Untitled (Boy Series), 1980-1990
 Pen and ink, watercolor wash and colored pencil on paper
 9 x 6" (22.9 x 15.2 cm)
 Private collection



TIM BURTON American, born 1958
Untitled (Burton on Carousel), c. 1985
 Photograph
 8 x 10" (20.3 x 25.4 cm)
 Private collection



TIM BURTON American, born 1958
Untitled (Girl Series), 1980-1990
 Pen and ink and watercolor on paper
 10 3/4 x 10 3/4" (27.3 x 27.3 cm)
 Private collection



TIM BURTON American, born 1958
Untitled (Girl Series), 1980-1990
 Pen and ink and watercolor on paper
 11 x 8 1/2" (27.9 x 21.6 cm)
 Private collection



TIM BURTON American, born 1958
Untitled (Girl Series), 1980-1990
 Pen and ink on paper
 12 x 8 1/2" (30.5 x 21.6 cm)
 Private collection



TIM BURTON American, born 1958
Untitled (Girl Series), 1980-1990
 Pen and ink on paper
 11 x 8 1/2" (27.9 x 21.6 cm)
 Private collection



TIM BURTON American, born 1958
Untitled (Girl Series), 1980-1990
 Pen and ink on paper
 5 x 8" (12.7 x 20.3 cm)
 Private collection



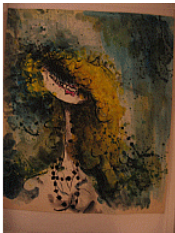
TIM BURTON American, born 1958
Untitled (Girl Series), 1980-1990
 Pen and ink and watercolor on paper
 8 x 5" (20.3 x 12.7 cm)
 Private collection



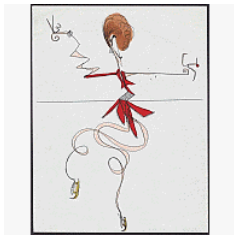
TIM BURTON American, born 1958
Untitled (Girl Series), 1980-1990
 Pen and ink on paper
 7 x 5 1/2" (17.8 x 14 cm)
 Private collection



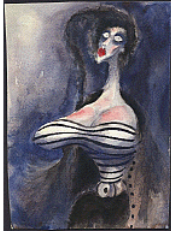
TIM BURTON American, born 1958
Untitled (Girl Series), 1980-1990
 Pen and ink and watercolor on paper
 14 x 10 1/2" (35.6 x 26.7 cm)
 Private collection



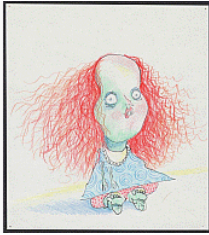
TIM BURTON American, born 1958
Untitled (Girl Series), 1980-1990
 Watercolor on paper
 15 1/2 x 13" (39.4 x 33 cm)
 Private collection



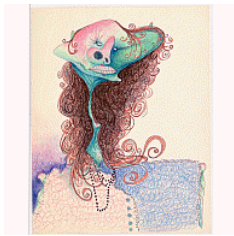
TIM BURTON American, born 1958
Untitled (Girl Series), 1980-1990
 Pen and ink, watercolor wash and colored pencil on paper
 11 x 9" (27.9 x 22.9 cm)
 Private collection



TIM BURTON American, born 1958
Untitled (Girl Series), 1980-1990
 Watercolor and colored pencil on paper
 11 x 8" (27.9 x 20.3 cm)
 Private collection



TIM BURTON American, born 1958
Untitled (Girl Series), 1980-1990
 Pen and ink and colored pencil on paper
 7 x 6" (17.8 x 15.2 cm)
 Private collection



TIM BURTON American, born 1958
Untitled (Picasso Woman), 1980-1990
 Pen and ink and watercolor on paper
 13 x 10 1/4" (33 x 26 cm)
 Private collection



TIM BURTON American, born 1958
Untitled (Ramone), 1980-1990
 Pen and ink, marker and colored pencil on paper
 11 x 9" (27.9 x 22.9 cm)
 Private collection



TIM BURTON American, born 1958
Untitled (Boy Series), 1980-1995
 Ink and watercolor on paper
 11 x 17" (27.9 x 43.2 cm)
 Private collection



TIM BURTON American, born 1958
Untitled (Boy Series), 1980-1995
 Pen and ink and watercolor on paper
 9 x 5 3/4" (22.9 x 14.6 cm)
 Private collection



TIM BURTON American, born 1958
Untitled (Boy Series), 1980-1995
 Pen and ink and watercolor on paper
 11 x 14" (27.9 x 35.6 cm)
 Private collection



TIM BURTON American, born 1958
Untitled (Boy Series), 1980-1995
 Pen and ink and watercolor on paper
 14 1/4 x 10 1/4" (36.2 x 26 cm)
 Private collection



TIM BURTON American, born 1958
Untitled (Boy Series), 1980-1995
 Pen and ink on paper
 11 1/2 x 12 1/2" (29.2 x 31.8 cm)
 Private collection



TIM BURTON American, born 1958
Untitled (Boy Series), 1980-1995
 Pen and ink and watercolor on paper
 11 x 9" (27.9 x 22.9 cm)
 Private collection



TIM BURTON American, born 1958
Untitled (Boy Series), 1980-1995
 Pen and ink and watercolor on paper
 12 x 8" (30.5 x 20.3 cm)
 Private collection



TIM BURTON American, born 1958
Untitled (Boy Series), 1980-1995
 Pen and ink on paper
 8 x 10" (20.3 x 25.4 cm)
 Private collection



TIM BURTON American, born 1958
Untitled (Boy Series), 1980-1995
 Pencil and watercolor on paper
 8 x 10" (20.3 x 25.4 cm)
 Private collection



TIM BURTON American, born 1958
Untitled (Boy Series), 1980-1995
 Pencil on paper
 10 x 8" (25.4 x 20.3 cm)
 Private collection



TIM BURTON American, born 1958
Untitled (Creature Series), 1980-1995
 Pen and ink and watercolor on paper
 8 1/2 x 5 1/2" (21.6 x 14 cm)
 Private collection



TIM BURTON American, born 1958
Untitled (Obscene hand), 1980-1995
 Pen and ink on paper
 8 x 10" (20.3 x 25.4 cm)
 Private collection



TIM BURTON American, born 1958
Untitled (Creature Series), 1980-1999
 Pen and ink and watercolor wash on paper
 11 x 11" (27.9 x 27.9 cm)
 Private collection



TIM BURTON American, born 1958
Untitled (Little Dead Riding Hood), 1981
 Pen and ink on paper
 7 x 8" (17.8 x 20.3 cm)
 Private collection



TIM BURTON American, born 1958
Untitled (Little Dead Riding Hood), 1981
 Pen and ink, watercolor wash and colored pencil on paper
 11 x 16" (27.9 x 40.6 cm)
 Private collection



RICK HEINRICHS American, born 1954
Candy Monster, Trick or Treat, 1981
 Wax, candy wrapper, wire and paint
 9 1/2 x 9 1/2 x 8" (24.1 x 24.1 x 20.3 cm)
 Rick Heinrichs



RICK HEINRICHS American, born 1954
Pin the Tail on the Donkey Monster, Trick or Treat, 1981
 Clay, wire armature, sisal, plastic bag cut-outs for "pinned tails," and paint
 7 3/4 x 8 x 7" (19.7 x 20.3 x 17.8 cm)
 Rick Heinrichs



RICK HEINRICHS American, born 1954
Sound man, Dream Factory, 1981
 Clay, wire and paint
 10 x 15 x 7 1/2" (25.4 x 38.1 x 19.1 cm)
 Rick Heinrichs



RICK HEINRICHS American, born 1954
Totem Creature, Trick or Treat, 1981
 Clay and wire armature
 14 x 9 1/2 x 8" (35.6 x 24.1 x 20.3 cm)
 Rick Heinrichs



TIM BURTON American, born 1958
Untitled (True Love), 1981-1983
 Pen and ink and marker on paper
 13 x 16" (33 x 40.6 cm)
 Private collection



TIM BURTON American, born 1958
Untitled (True Love), 1981-1983
 Pen and ink, marker and colored pencil on paper
 12 x 14" (30.5 x 35.6 cm)
 Private collection



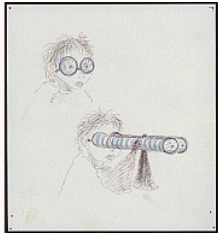
TIM BURTON American, born 1958
Untitled (True Love), 1981-1983
 Pen and ink, watercolor, crayon and pencil on paper
 10 x 13" (25.4 x 33 cm)
 Private collection



TIM BURTON American, born 1958
Untitled (True Love), 1981-1983
 Pen and ink, watercolor wash, colored pencil and marker on paper
 11 x 14" (27.9 x 35.6 cm)
 Private collection



TIM BURTON American, born 1958
Untitled (True Love), 1981-1983
 Pen and ink and watercolor wash on paper
 6 x 4" (15.2 x 10.2 cm)
 Private collection



TIM BURTON American, born 1958
Untitled (True Love), 1981-1983
 Pen and ink and colored pencil on paper
 7 x 6" (17.8 x 15.2 cm)
 Private collection



TIM BURTON American, born 1958
Untitled (True Love), 1981-1983
 Pen and ink, marker and colored pencil on paper
 13 x 16" (33 x 40.6 cm)
 Private collection



TIM BURTON American, born 1958
Untitled (True Love), 1981-1983
 Pen and ink, watercolor wash and colored pencil on paper
 11 x 15" (27.9 x 38.1 cm)
 Private collection



TIM BURTON American, born 1958
Untitled (True Love), 1981-1983
 Pen and ink, marker and colored pencil on paper
 14 x 9" (35.6 x 22.9 cm)
 Private collection



TIM BURTON American, born 1958
Untitled (True Love), 1981-1983
 Pen and ink, marker and crayon on paper
 10 x 14" (25.4 x 35.6 cm)
 Private collection



TIM BURTON American, born 1958
Untitled (True Love), 1981-1983
 Pen and ink on paper
 7 x 14" (17.8 x 35.6 cm)
 Private collection



TIM BURTON American, born 1958
Untitled (True Love), 1981-1983
 Pen and ink, watercolor and colored pencil on paper
 12 x 10" (30.5 x 25.4 cm)
 Private collection



TIM BURTON American, born 1958
Untitled (True Love), 1981-1983
 Pen and ink, marker and colored pencil on paper
 13 x 14" (33 x 35.6 cm)
 Private collection



TIM BURTON American, born 1958
Untitled (True Love), 1981-1983
 Pen and ink, watercolor wash, marker and colored pencil on paper
 12 x 14" (30.5 x 35.6 cm)
 Private collection



RICK HEINRICHS American, born 1954
Dr. Fu Robot Transformer, True Love, 1981-1983
 Sculpy, wire, metal, rod and paint
 23 x 17 x 8" (58.4 x 43.2 x 20.3 cm)
 Rick Heinrichs



RICK HEINRICHS American, born 1954
Henry Army Transformer, True Love, 1981-1983
 Sculpy, wire, metal, rod and paint
 Approx. 19 x 15" (48.3 x 38.1 cm)
 Rick Heinrichs



TIM BURTON American, born 1958
Untitled (Romeo and Juliet), 1981-1984
 Ink, marker, and colored pencil on paper
 11 x 8" (27.9 x 20.3 cm)
 Private collection



TIM BURTON American, born 1958
Untitled (Romeo and Juliet), 1981-1984
 Ink, marker, and colored pencil on paper
 10 x 9" (25.4 x 22.9 cm)
 Private collection



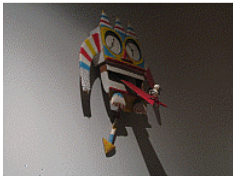
TIM BURTON American, born 1958
Untitled (Romeo and Juliet), 1981-1984
 Ink, marker, and colored pencil on paper
 11 x 11" (27.9 x 27.9 cm)
 Private collection



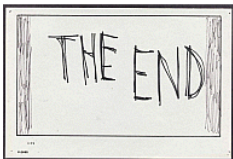
TIM BURTON American, born 1958
Untitled (Romeo and Juliet), 1981-1984
 Ink, marker and colored pencil on paper
 12 x 16" (30.5 x 40.6 cm)
 Private collection



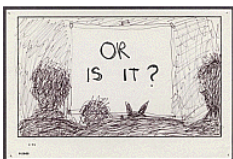
TIM BURTON American, born 1958
Untitled (Romeo and Juliet), 1981-1984
 Ink, marker, and colored pencil on paper
 16 x 12" (40.6 x 30.5 cm)
 Private collection



Hansel and Gretel clock, 1982
 Paint on wood
 clock is 20 x 23 x 4"; arrow is 2.5 x 17 x 2.75"; tongue is 3.5 x 18 x 6"(contracted)
 Private collection



TIM BURTON American, born 1958
Frankenweenie, 1982
 Pen and ink on paper
 5 x 7" (12.7 x 17.8 cm)
 Private collection



TIM BURTON American, born 1958
Frankenweenie, 1982
 Pen and ink on paper
 5 x 7" (12.7 x 17.8 cm)
 Private collection



TIM BURTON American, born 1958
Frankenweenie storyboard, 1982
 Pen and ink on paper
 5 x 7" (12.7 x 17.8 cm)
 Private collection



TIM BURTON American, born 1958
Frankenweenie storyboard, 1982
 Pen and ink on paper
 5 x 7" (12.7 x 17.8 cm)
 Private collection



TIM BURTON American, born 1958
Hansel and Gretel storyboard, 1982
 Pen and ink, watercolor wash and colored pencil on paper
 7 x 8" (17.8 x 20.3 cm)
 Private collection



TIM BURTON American, born 1958
Hansel and Gretel storyboard, 1982
 Pen and ink on paper
 7 x 8" (17.8 x 20.3 cm)
 Private collection



TIM BURTON American, born 1958
Hansel and Gretel storyboard, 1982
 Pen and ink and colored pencil on paper
 7 x 8" (17.8 x 20.3 cm)
 Private collection



TIM BURTON American, born 1958
Hansel and Gretel storyboard, 1982
 Pen and ink, watercolor wash and colored pencil on paper
 7 x 8" (17.8 x 20.3 cm)
 Private collection



TIM BURTON American, born 1958
Hansel and Gretel storyboard, 1982
 Pen and ink and colored pencil on paper
 7 x 8" (17.8 x 20.3 cm)
 Private collection



TIM BURTON American, born 1958
Hansel and Gretel storyboard, 1982
 Pen and ink and colored pencil on paper
 7 x 8" (17.8 x 20.3 cm)
 Private collection



TIM BURTON American, born 1958
Hansel and Gretel storyboard, 1982
 Pen and ink and colored pencil on paper
 7 x 8" (17.8 x 20.3 cm)
 Private collection



TIM BURTON American, born 1958
Hansel and Gretel storyboard, 1982
 Pen and ink and colored pencil on paper
 7 x 8" (17.8 x 20.3 cm)
 Private collection



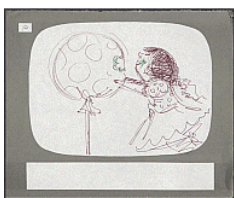
TIM BURTON American, born 1958
Hansel and Gretel storyboard, 1982
 Pen and ink and watercolor wash on paper
 7 x 8" (17.8 x 20.3 cm)
 Private collection



TIM BURTON American, born 1958
Hansel and Gretel storyboard, 1982
 Pen and ink and colored pencil on paper
 7 x 8" (17.8 x 20.3 cm)
 Private collection



TIM BURTON American, born 1958
Hansel and Gretel storyboard, 1982
 Pen and ink and colored pencil on paper
 7 x 8" (17.8 x 20.3 cm)
 Private collection



TIM BURTON American, born 1958
Hansel and Gretel storyboard, 1982
 Pen and ink and colored pencil on paper
 7 x 8" (17.8 x 20.3 cm)
 Private collection



TIM BURTON American, born 1958
Hansel and Gretel storyboard, 1982
 Pen and ink and colored pencil on paper
 7 x 8" (17.8 x 20.3 cm)
 Private collection



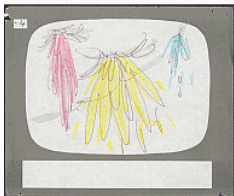
TIM BURTON American, born 1958
Hansel and Gretel storyboard, 1982
 Pen and ink and colored pencil on paper
 7 x 8" (17.8 x 20.3 cm)
 Private collection



TIM BURTON American, born 1958
Hansel and Gretel storyboard, 1982
 Pen and ink and colored pencil on paper
 7 x 8" (17.8 x 20.3 cm)
 Private collection



TIM BURTON American, born 1958
Hansel and Gretel storyboard, 1982
 Pen and ink and colored pencil on paper
 7 x 8" (17.8 x 20.3 cm)
 Private collection



TIM BURTON American, born 1958
Hansel and Gretel storyboard, 1982
 Pen and ink and colored pencil on paper
 7 x 8" (17.8 x 20.3 cm)
 Private collection



TIM BURTON American, born 1958
Hansel and Gretel storyboard, 1982
 Pen and ink and colored pencil on paper
 7 x 8" (17.8 x 20.3 cm)
 Private collection



TIM BURTON American, born 1958
Hansel and Gretel storyboard, 1982
 Pen and ink and colored pencil on paper
 7 x 8" (17.8 x 20.3 cm)
 Private collection



TIM BURTON American, born 1958
Hansel and Gretel storyboard, 1982
 Pen and ink and colored pencil on paper
 7 x 8" (17.8 x 20.3 cm)
 Private collection



TIM BURTON American, born 1958
Hansel and Gretel storyboard, 1982
 Pen and ink and colored pencil on paper
 7 x 8" (17.8 x 20.3 cm)
 Private collection



TIM BURTON American, born 1958
Hansel and Gretel storyboard, 1982
 Pen and ink and colored pencil on paper
 7 x 8" (17.8 x 20.3 cm)
 Private collection



TIM BURTON American, born 1958
Untitled (Frankenweenie), 1982
 Pen and ink on paper
 10 x 12" (25.4 x 30.5 cm)
 Private collection



TIM BURTON American, born 1958
Untitled (Frankenweenie), 1982
 Pen and ink, watercolor wash and colored pencil on paper
 10 x 7" (25.4 x 17.8 cm)
 Private collection



TIM BURTON American, born 1958
Untitled (Frankenweenie), 1982
 Pen and ink, watercolor wash and charcoal on paper
 11 x 13" (27.9 x 33 cm)
 Private collection



TIM BURTON American, born 1958
Untitled (Frankenweenie), 1982
 Pen and ink and watercolor wash on paper
 7 x 6" (17.8 x 15.2 cm)
 Private collection



TIM BURTON American, born 1958
Untitled (Frankenweenie), 1982
 Pen and ink, watercolor wash and colored pencil on paper
 10 x 13" (25.4 x 33 cm)
 Private collection



TIM BURTON American, born 1958
Untitled (Frankenweenie), 1982
 Pen, ink, watercolor wash and colored pencil on paper
 Image: 12 x 14 1/2" (30.5 x 36.8 cm)
 Mat: 17 1/2 x 20 1/2" (44.5 x 52.1 cm)
 Private collection



TIM BURTON American, born 1958
Untitled (Frankenweenie), 1982
 Pen and ink and watercolor wash on paper
 10 x 9" (25.4 x 22.9 cm)
 Private collection



TIM BURTON American, born 1958
Untitled (Hansel and Gretel), 1982
 Pen and ink and watercolor wash on paper
 11 x 9" (27.9 x 22.9 cm)
 Private collection



TIM BURTON American, born 1958
Untitled (Hansel and Gretel), 1982
 Pen and ink and watercolor wash on paper
 11 x 12" (27.9 x 30.5 cm)
 Private collection



TIM BURTON American, born 1958
Untitled (Hansel and Gretel), 1982
 Pen and ink and watercolor wash on paper
 12 x 10" (30.5 x 25.4 cm)
 Private collection



TIM BURTON American, born 1958
Untitled (Hansel and Gretel), 1982
 Pen and ink, watercolor wash and colored pencil on paper
 6 x 7" (15.2 x 17.8 cm)
 Private collection



TIM BURTON American, born 1958
Untitled (Hansel and Gretel), 1982
 Pen and ink and watercolor wash on paper
 11 x 9" (27.9 x 22.9 cm)
 Private collection



TIM BURTON American, born 1958
Untitled (Hansel and Gretel), 1982
 Pen and ink and watercolor wash on paper
 10 x 5" (25.4 x 12.7 cm)
 Private collection



TIM BURTON American, born 1958
Untitled (Hansel and Gretel), 1982
 Pen and ink and watercolor wash on paper
 11 x 5" (27.9 x 12.7 cm)
 Private collection



TIM BURTON American, born 1958
Untitled (Hansel and Gretel), 1982
 Pen and ink and watercolor wash on paper
 10 x 6" (25.4 x 15.2 cm)
 Private collection



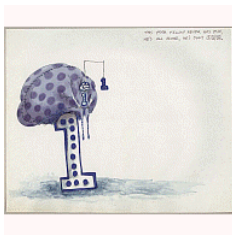
TIM BURTON American, born 1958
Untitled (Hansel and Gretel), 1982
 Pen and ink and watercolor wash on paper
 9 x 13" (22.9 x 33 cm)
 Private collection



TIM BURTON American, born 1958
Untitled (Hansel and Gretel), 1982
 Pen and ink and watercolor wash on paper
 11 x 8" (27.9 x 20.3 cm)
 Private collection



TIM BURTON American, born 1958
Untitled (Hansel and Gretel), 1982
 Pen and ink and watercolor wash on paper
 13 x 11" (33 x 27.9 cm)
 Private collection



TIM BURTON American, born 1958
Untitled (Number Series, #1), 1982
 Ink and marker on paper
 11 x 13" (27.9 x 33 cm)
 Private collection



TIM BURTON American, born 1958
Untitled (Number Series, #10), 1982
 Ink and marker on paper
 12 x 14" (30.5 x 35.6 cm)
 Private collection



TIM BURTON American, born 1958
Untitled (Number Series, #2), 1982
 Ink and marker on paper
 11 x 14" (27.9 x 35.6 cm)
 Private collection



TIM BURTON American, born 1958
Untitled (Number Series, #3), 1982
 Ink and marker on paper
 11 x 14" (27.9 x 35.6 cm)
 Private collection



TIM BURTON American, born 1958
Untitled (Number Series, #4), 1982
 Ink and marker on paper
 12 x 14" (30.5 x 35.6 cm)
 Private collection



TIM BURTON American, born 1958
Untitled (Number Series, #5), 1982
 Ink and marker on paper
 11 x 14" (27.9 x 35.6 cm)
 Private collection



TIM BURTON American, born 1958
Untitled (Number Series, #6), 1982
 Ink and marker on paper
 11 x 15" (27.9 x 38.1 cm)
 Private collection



TIM BURTON American, born 1958
Untitled (Number Series, #7), 1982
 Ink and marker on paper
 12 x 14" (30.5 x 35.6 cm)
 Private collection



TIM BURTON American, born 1958
Untitled (Number Series, #8), 1982
 Ink and marker on paper
 10 x 16" (25.4 x 40.6 cm)
 Private collection



TIM BURTON American, born 1958
Untitled (Number Series, #9), 1982
 Ink and marker on paper
 11 x 17" (27.9 x 43.2 cm)
 Private collection



TIM BURTON American, born 1958
Untitled (Vincent), 1982
 Pen and ink on paper
 9 x 10" (22.9 x 25.4 cm)
 Private collection



TIM BURTON American, born 1958
Untitled (Vincent), 1982
 Pen and ink on paper
 8 x 6" (20.3 x 15.2 cm)
 Private collection



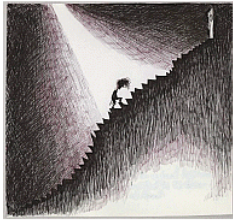
TIM BURTON American, born 1958
Untitled (Vincent), 1982
 Pen and ink on paper
 10 x 14" (25.4 x 35.6 cm)
 Private collection



TIM BURTON American, born 1958
Untitled (Vincent), 1982
 Pen and ink on paper
 9 x 12" (22.9 x 30.5 cm)
 Private collection



TIM BURTON American, born 1958
Untitled (Vincent), 1982
 Pen and ink on paper
 11 x 13" (27.9 x 33 cm)
 Private collection



TIM BURTON American, born 1958
Untitled (Vincent), 1982
 Pen and ink and watercolor wash on paper
 9 x 10" (22.9 x 25.4 cm)
 Private collection



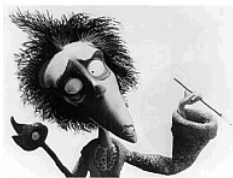
TIM BURTON American, born 1958
Untitled (Vincent), 1982
 Pen and ink on paper
 12 x 16" (30.5 x 40.6 cm)
 Private collection



TIM BURTON American, born 1958
Untitled (Vincent), 1982
 Pen and ink, watercolor wash and colored pencil on paper
 Image: 8 1/2 x 11" (21.6 x 27.9 cm)
 Mat: 12 1/4 x 15" (31.1 x 38.1 cm)
 Private collection



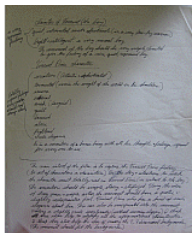
TIM BURTON American, born 1958
Untitled (Vincent), 1982
 Pen and ink on paper
 18 x 22 1/2" (45.7 x 57.2 cm)
 Private collection



TIM BURTON American, born 1958
Vincent, 1982
 35mm film transferred to digital video, black and white, sound, 6 min.
 Disney



TIM BURTON American, born 1958
 Pencil notation: STEPHEN CHIODO American, born 1954
Vincent animation timing notes, 1982
 Ink and collage elements on paper
 11 x 15" (27.9 x 38.1 cm)
 Stephen Chiodo



TIM BURTON American, born 1958
Vincent character notes, 1982
 Ink on paper
 16 1/2 x 13 1/2" (41.9 x 34.3 cm)
 Private collection



TIM BURTON American, born 1958
 Blue ink animation notes: STEPHEN CHIODO American, born 1954
Vincent sketch, 1982
 Ink on paper
 12 x 14 1/2" (30.5 x 36.8 cm)
 Stephen Chiodo



TIM BURTON American, born 1958
Vincent sketch, 1982
 Ink on paper
 10 x 27" (25.4 x 68.6)
 Stephen Chiodo



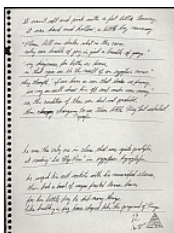
RICK HEINRICHS American, born 1954
Vincent display piece, 1982
 Clay, wire, metal, wood and paint.
 15 x 31 x 17" (38.1 x 78.7 x 43.2 cm)
 Rick Heinrichs



RICK HEINRICHS American, born 1954
Zero, The Nightmare Before Christmas, 1982
 Sculpy, fabric, glue, wire and paint
 14 x 10 1/2 x 8 1/4" (35.6 x 26.7 x 21 cm)
 Rick Heinrichs



TIM BURTON American, born 1958
Untitled (The Melancholy Death of Oyster Boy and Other Stories sketch - Mummy Boy), 1982-1984
 Pen and ink, watercolor and pastel on paper
 12 x 9" (30.5 x 22.9 cm)
 Private collection



TIM BURTON American, born 1958
Untitled (The Melancholy Death of Oyster Boy and Other Stories), 1982-1984
 Pen and ink on paper
 12 x 9" (30.5 x 22.9 cm)
 Private collection



TIM BURTON American, born 1958
Untitled (The Melancholy Death of Oyster Boy and Other Stories), 1982-1984
 Ink, marker and colored pencil on paper
 10 x 9" (25.4 x 22.9 cm)
 Private collection



TIM BURTON American, born 1958
Sketchbook, c. 1982
 Sketchbook
 14 1/2 x 14" (36.8 x 35.6 cm)
 Private collection



TIM BURTON American, born 1958
Hansel and Gretel, 1983
 Digital video (color, sound), 35 min.
 Courtesy of Disney Channel



TIM BURTON American, born 1958
Untitled (Alien Series), 1983
 Pen and ink and colored pencil on paper
 14 x 6" (35.6 x 15.2 cm)
 Private collection



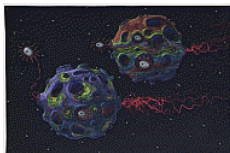
TIM BURTON American, born 1958
Untitled (Alien Series), 1983
 Pen and ink, watercolor wash and colored pencil on paper
 8 x 8" (20.3 x 20.3 cm)
 Private collection



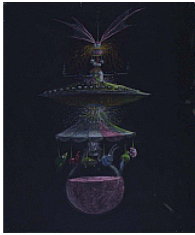
TIM BURTON American, born 1958
Untitled (Alien Series), 1983
 Pastel on black paper
 18 x 24" (45.7 x 61 cm)
 Private collection



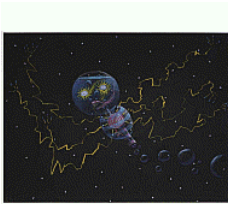
TIM BURTON American, born 1958
Untitled (Alien Series), 1983
 Pastel on black paper
 16 x 22" (40.6 x 55.9 cm)
 Private collection



TIM BURTON American, born 1958
Untitled (Alien Series), 1983
 Pastel on black paper
 12 x 18" (30.5 x 45.7 cm)
 Private collection



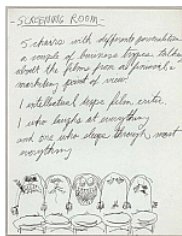
TIM BURTON American, born 1958
Untitled (Alien Series), 1983
 Chalk and pastel on black paper
 30 x 24" (76.2 x 61 cm)
 Private collection



TIM BURTON American, born 1958
Untitled (Alien Series), 1983
 Pastel on black paper
 18 x 24" (45.7 x 61 cm)
 Private collection



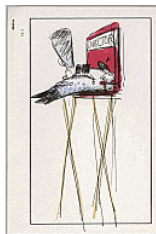
TIM BURTON American, born 1958
Untitled (Alien Series), 1983
 Pastel on black paper
 24 x 18" (61 x 45.7 cm)
 Private collection



TIM BURTON American, born 1958
Untitled (Dream Factory), 1983
 Pen and ink on paper
 7 x 5" (17.8 x 12.7 cm)
 Private collection



TIM BURTON American, born 1958
Untitled (Dream Factory), 1983
 Pen and ink and watercolor wash on paper
 10 x 9" (25.4 x 22.9 cm)
 Private collection



TIM BURTON American, born 1958
Untitled (Dream Factory), 1983
 Pen and ink and watercolor wash on paper
 7 x 5" (17.8 x 12.7 cm)
 Private collection



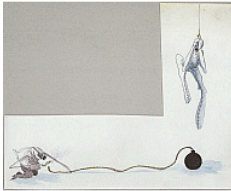
TIM BURTON American, born 1958
Untitled (Dream Factory), 1983
 Pen and ink and watercolor wash on paper
 10 x 13" (25.4 x 33 cm)
 Private collection



TIM BURTON American, born 1958
Untitled (Dream Factory), 1983
 Pen and ink and watercolor wash on paper
 15 x 12" (38.1 x 30.5 cm)
 Private collection



TIM BURTON American, born 1958
Untitled (Dream Factory), 1983
 Pen and ink on paper
 7 x 5" (17.8 x 12.7 cm)
 Private collection



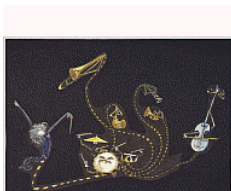
TIM BURTON American, born 1958
Untitled (Dream Factory), 1983
 Pen and ink and watercolor wash on paper
 13 x 11" (33 x 27.9 cm)
 Private collection



TIM BURTON American, born 1958
Untitled (Dream Factory), 1983
 Pen and ink on paper
 7 x 5" (17.8 x 12.7 cm)
 Private collection



TIM BURTON American, born 1958
Untitled (Dream Factory), 1983
 Pen and ink and watercolor wash on paper
 9 x 11" (22.9 x 27.9 cm)
 Private collection



TIM BURTON American, born 1958
Untitled (Dream Factory), 1983
 Pen and ink, watercolor wash and collage elements on paper
 14 x 19" (35.6 x 48.3 cm)
 Private collection



TIM BURTON American, born 1958
Untitled (Dream Factory), 1983
 Pen and ink, watercolor wash and collage elements on paper
 14 x 24" (35.6 x 61 cm)
 Private collection



TIM BURTON American, born 1958
Untitled (The Black Cauldron), 1983
 Pen and ink, watercolor wash, watercolor and marker on paper
 12 x 14" (30.5 x 35.6 cm)
 Private collection



TIM BURTON American, born 1958
Untitled (The Black Cauldron), 1983
 Pen and ink, watercolor wash, watercolor and marker on paper
 10 x 10" (25.4 x 25.4 cm)
 Private collection



TIM BURTON American, born 1958
Untitled (The Black Cauldron), 1983
 Pen and ink, watercolor wash, watercolor and marker on paper
 12 x 14" (30.5 x 35.6 cm)
 Private collection



TIM BURTON American, born 1958
Untitled (The Black Cauldron), 1983
 Pen and ink and watercolor wash on paper
 13 x 10" (33 x 25.4 cm)
 Private collection



TIM BURTON American, born 1958
Untitled (The Black Cauldron), 1983
 Pen and ink and watercolor wash on paper
 12 x 15" (30.5 x 38.1 cm)
 Private collection



TIM BURTON American, born 1958
Untitled (The Black Cauldron), 1983
 Pen and ink and watercolor wash on paper
 12 x 12" (30.5 x 30.5 cm)
 Private collection



TIM BURTON American, born 1958
Untitled (The Black Cauldron), 1983
 Pen and ink and watercolor wash on paper
 11 x 14" (27.9 x 35.6 cm)
 Private collection



TIM BURTON American, born 1958
Untitled (The Black Cauldron), 1983
 Pen and ink and watercolor wash on paper
 9 x 13" (22.9 x 33 cm)
 Private collection



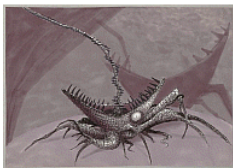
TIM BURTON American, born 1958
Untitled (The Black Cauldron), 1983
 Pen and ink, watercolor wash and watercolor on paper
 11 x 13" (27.9 x 33 cm)
 Private collection



TIM BURTON American, born 1958
Untitled (The Black Cauldron), 1983
 Pen and ink and watercolor wash on paper
 10 x 7" (25.4 x 17.8 cm)
 Private collection



TIM BURTON American, born 1958
Untitled (The Black Cauldron), 1983
 Pen and ink, watercolor wash and watercolor on paper
 10 x 11" (25.4 x 27.9 cm)
 Private collection



TIM BURTON American, born 1958
Untitled (The Black Cauldron), 1983
 Pen and ink and watercolor wash on paper
 10 x 14" (25.4 x 35.6 cm)
 Private collection



TIM BURTON American, born 1958
Untitled (The Black Cauldron), 1983
 Pen and ink and watercolor wash on paper
 11 x 15" (27.9 x 38.1 cm)
 Private collection



TIM BURTON American, born 1958
Untitled (The Black Cauldron), 1983
 Pen and ink and watercolor wash on paper
 11 x 14" (27.9 x 35.6 cm)
 Private collection



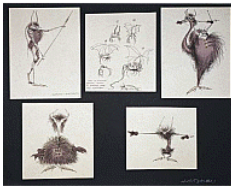
TIM BURTON American, born 1958
Untitled (The Black Cauldron), 1983
 Pastel on black paper
 8 x 11" (20.3 x 27.9 cm)
 Private collection



TIM BURTON American, born 1958
Untitled (The Black Cauldron), 1983
 Pen and ink and watercolor wash on paper
 12 x 14" (30.5 x 35.6 cm)
 Private collection



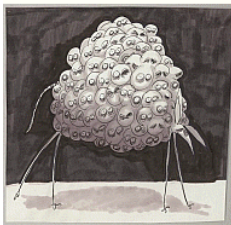
TIM BURTON American, born 1958
Untitled (The Black Cauldron), 1983
 Pen, ink and watercolor wash on paper
 Matted, approx.: 26 x 32" (66 x 81.3 cm)
 Private collection



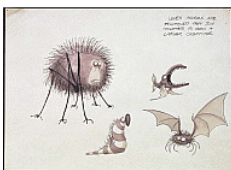
TIM BURTON American, born 1958
Untitled (The Black Cauldron), 1983
 Pen, ink and watercolor wash on paper
 Matted, approx.: 32 x 22" (81.3 x 55.9 cm)
 Private collection



TIM BURTON American, born 1958
Untitled (The Black Cauldron), 1983
 Pen and ink and watercolor wash on paper
 9 x 7" (22.9 x 17.8 cm)
 Private collection



TIM BURTON American, born 1958
Untitled (The Black Cauldron), 1983
 Pen and ink and watercolor wash on darkground on paper
 8 x 8" (20.3 x 20.3 cm)
 Private collection



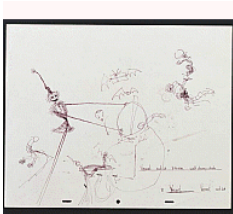
TIM BURTON American, born 1958
Untitled (The Black Cauldron), 1983
 Pen and ink and watercolor wash on paper
 11 x 16" (27.9 x 40.6 cm)
 Private collection



TIM BURTON American, born 1958
Untitled (The Black Cauldron), 1983
 Pen and ink and watercolor wash on paper
 11 x 16" (27.9 x 40.6 cm)
 Private collection



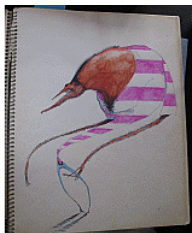
TIM BURTON American, born 1958
Untitled (The Black Cauldron), 1983
 Pen and ink and watercolor wash on paper
 12 x 15" (30.5 x 38.1 cm)
 Private collection



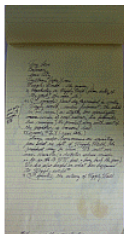
TIM BURTON American, born 1958
Untitled (The Nightmare Before Christmas), 1983
 Pen and ink on paper
 12 x 15" (30.5 x 38.1 cm)
 Private collection



TIM BURTON American, born 1958
Untitled (The Nightmare Before Christmas), 1983
 Pen and ink, watercolor and graphite on paper
 13 x 10" (33 x 25.4 cm)
 Private collection



TIM BURTON American, born 1958
Sketchbook, c. 1983
 Sketchbook
 14 x 11 1/2" (35.6 x 29.2 cm)
 Private collection



TIM BURTON American, born 1958
Beetlejuice notes, c. 1988
 Ink on legal pad
 13 3/4 x 8 1/2" (34.9 x 21.6 cm)
 Private collection



TIM BURTON American, born 1958
Untitled (Family Dog), 1985
 Pen and ink and watercolor on paper
 6 x 11" (15.2 x 27.9 cm)
 Private collection



TIM BURTON American, born 1958
Untitled (Family Dog), 1985
 Pen and ink and colored pencil on paper
 5 x 8" (12.7 x 20.3 cm)
 Private collection



TIM BURTON American, born 1958
Untitled (Miscellaneous), 1985
 Pen and ink and colored pencil on paper
 11 x 9" (27.9 x 22.9 cm)
 Private collection



TIM BURTON American, born 1958
Untitled (Pee-wee's Big Adventure - Large Marge), 1985
 Colored pencil on paper
 12 x 10" (30.5 x 25.4 cm)
 Private collection



TIM BURTON American, born 1958
Untitled (Pee-wee's Big Adventure), 1985
 Paint on paper
 Image: 12 x 10" (30.5 x 25.4 cm)
 Mat: 18 x 16" (45.7 x 40.6 cm)
 Private collection



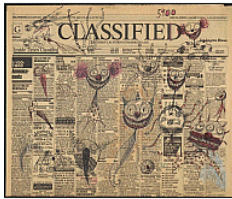
Casting and fabrication: STEPHEN CHIODO American, born 1954
 Painting and finishing: CHARLES CHIODO American, born 1952
Marge eyeballs, 1985
Pee-wee's Big Adventure
 Plaster, acrylic paint, and brass rods
 11 separate eyeballs of various sizes from 1" - 3"
 Stephen Chiodo



JOHN ALVIN American, 1948-2008
Pee-wee's Big Adventure, 1985
 Poster
 40 x 27" (101.6 x 68.6 cm)
 The Museum of Modern Art, New York



TIM BURTON American, born 1958
Untitled (Clown Series), 1985-1994
 Pen and ink and pastel on paper
 14 x 11" (35.6 x 27.9 cm)
 Private collection



TIM BURTON American, born 1958
Untitled (Clown Series), 1985-1994
 Pen and ink and colored pencil on newspaper
 11 x 14" (27.9 x 35.6 cm)
 Private collection



TIM BURTON American, born 1958
Untitled (Clown Series), 1985-1994
 Pen and ink and pastel on paper
 11 x 14" (27.9 x 35.6 cm)
 Private collection



TIM BURTON American, born 1958
Untitled (Clown Series), 1985-1994
 Pen and ink and pastel on paper
 8 x 5" (20.3 x 12.7 cm)
 Private collection



TIM BURTON American, born 1958
Untitled (Clown Series), 1985-1994
 Pen and ink, watercolor wash and colored pencil on paper
 11 x 16" (27.9 x 40.6 cm)
 Private collection



RICK HEINRICHS American, born 1954
Snake maquette, Beetlejuice, 1987
 Clay, wire, sisal, and paint
 15 x 12 x 11 3/4", 5 lb. (38.1 x 30.5 x 29.8 cm, 2.3 kg)
 Rick Heinrichs



TIM BURTON American, born 1958
Untitled (Beetlejuice), 1988
 Pen and ink and colored pencil on paper
 11 x 10" (27.9 x 25.4 cm)
 Private collection



TIM BURTON American, born 1958
Untitled (Beetlejuice), 1988
 Pen and ink, watercolor and colored pencil on paper
 8 x 6" (20.3 x 15.2 cm)
 Private collection



TIM BURTON American, born 1958
Untitled (Beetlejuice), 1988
 Pen and ink on paper
 6 x 6" (15.2 x 15.2 cm)
 Private collection



TIM BURTON American, born 1958
Untitled (Beetlejuice), 1988
 Pen and ink on paper
 10 x 6" (25.4 x 15.2 cm)
 Private collection



TIM BURTON American, born 1958
Untitled (Beetlejuice), 1988
 Pen and ink, watercolor wash and watercolor on paper
 7 x 7" (17.8 x 17.8 cm)
 Private collection



TIM BURTON American, born 1958
Untitled (Beetlejuice), 1988
 Pen and ink on paper
 6 x 4" (15.2 x 10.2 cm)
 Private collection



TIM BURTON American, born 1958
Untitled (Beetlejuice), 1988
 Pen and ink on paper
 6 x 4" (15.2 x 10.2 cm)
 Private collection



TIM BURTON American, born 1958
Untitled (Beetlejuice), 1988
 Pen and ink and colored pencil on paper
 9 x 12" (22.9 x 30.5 cm)
 Private collection



TIM BURTON American, born 1958
Untitled (Beetlejuice), 1988
 Pen and ink and pastel on paper
 13 x 7" (33 x 17.8 cm)
 Private collection



TIM BURTON American, born 1958
Untitled (Beetlejuice), 1988
 Pen, ink, watercolor wash and watercolor on paper
 Image: 8 x 8 1/2" (20.3 x 21.6 cm)
 Mat: 13 1/2 x 14 1/2" (34.3 x 36.8 cm)
 Private collection



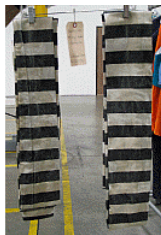
TIM BURTON American, born 1958
Untitled (Girl Series), 1988
 Pen and ink and colored pencil on paper
 14 x 11" (35.6 x 27.9 cm)
 Private collection



TIM BURTON American, born 1958
Untitled (The Melancholy Death of Oyster Boy and Other Stories), 1988
 Pen and ink on paper
 6 x 8" (15.2 x 20.3 cm)
 Private collection



BILL PETROTTA
The Afterlife newspaper, Beetlejuice, 1988
 Newspaper
 23" x 14" (display folded as 11 1/2" x 14")
 Courtesy of Warner Bros. Entertainment Inc.



AGGIE GUERARD RODGERS American, born 1943
Striped sleeves, Beetlejuice, 1988
 Cloth
 Courtesy of Warner Bros. Entertainment Inc.



Beetlejuice sandworm jaws, 1988
 Foam rubber with hard plastic teeth, and metal frame
 45 x 28 x 30" (114.3 x 71.1 x 76.2 cm)
 Courtesy of Warner Bros. Entertainment Inc.



Manufacturer: B. D. FOX INDEPENDENT
Beetlejuice, 1988
 Poster
 39 3/8 x 27" (100 x 68.6 cm)
 The Museum of Modern Art, New York



TIM BURTON American, born 1958
Untitled (Batman Returns), 1989
 Pen and ink and colored pencil on paper
 Image: 14 x 10 1/4" (35.6 x 26 cm)
 Mat: 18 1/2 x 15" (47 x 38.1 cm)
 Private collection



TIM BURTON American, born 1958
Untitled (Batman), 1989
 Pastel on paper
 12 x 9" (30.5 x 22.9 cm)
 Private collection



TIM BURTON American, born 1958
Untitled (Batman), 1989
 Pastel on paper
 17 x 11" (43.2 x 27.9 cm)
 Private collection



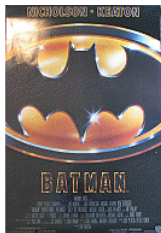
TIM BURTON American, born 1958
Untitled (Batman), 1989
 Pen and ink on paper
 6 x 4" (15.2 x 10.2 cm)
 Private collection



TIM BURTON American, born 1958
Untitled (Batman), 1989
 Pen and ink and watercolor on paper
 Image: 13 x 9 1/4" (33 x 23.5 cm)
 Mat: 18 x 15" (45.7 x 38.1 cm)
 Private collection



TIM BURTON American, born 1958
Untitled (Girl Series), 1989
 Pen and ink and colored pencil on paper
 9 x 5" (22.9 x 12.7 cm)
 Private collection



Designer: ANTON FURST British, 1944-1991
 Manufacturer: B. D. FOX INDEPENDENT
Batman, 1989
 Poster
 39 5/8 x 27" (100.6 x 68.6 cm)
 The Museum of Modern Art, New York



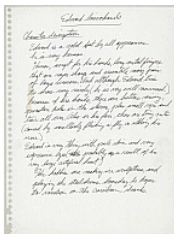
BOB RINGWOOD British, born 1946
Batman cowls, 1989
 Latex rubber
 17 x 14 x 7" (43.2 x 35.6 x 17.8 cm)
 Private collection



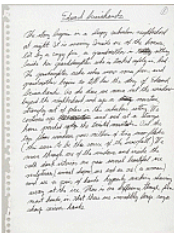
TIM BURTON American, born 1958
Untitled (Blotter), 1989-1993
 Pen and ink, pencil, pastel and watercolor on paper
 19 x 24" (48.3 x 61 cm)
 Private collection



TIM BURTON American, born 1958
Untitled (Doodle Pad Series), 1989-1993
 Pen and ink and colored pencil on paper
 17 x 24" (43.2 x 61 cm)
 Private collection



TIM BURTON American, born 1958
Edward Scissorhands caption, 1990
 Pen and ink on paper
 12 x 9" (30.5 x 22.9 cm)
 Private collection



TIM BURTON American, born 1958
Edward Scissorhands Caption, 1990
 Pen and ink on paper
 12 x 9" (30.5 x 22.9 cm)
 Private collection



TIM BURTON American, born 1958
Untitled (Edward Scissorhands), 1990
 Pen and ink on paper
 6 x 4" (15.2 x 10.2 cm)
 Private collection



TIM BURTON American, born 1958
Untitled (Edward Scissorhands), 1990
 Pencil on paper
 9 x 11" (22.9 x 27.9 cm)
 Private collection



TIM BURTON American, born 1958
Untitled (Edward Scissorhands), 1990
 Pen and ink on paper
 8 x 6" (20.3 x 15.2 cm)
 Private collection



TIM BURTON American, born 1958
Untitled (Edward Scissorhands), 1990
 Ink, watercolor, crayon, colored pencil and correction fluid on paper
 7 x 5" (17.8 x 12.7 cm)
 Private collection



TIM BURTON American, born 1958
Untitled (Edward Scissorhands), 1990
 Pen and ink on paper
 8 x 5" (20.3 x 12.7 cm)
 Private collection



TIM BURTON American, born 1958
Untitled (Edward Scissorhands), 1990
 Pen and ink and colored pencil on paper
 11 x 9" (27.9 x 22.9 cm)
 Private collection



TIM BURTON American, born 1958
Untitled (Edward Scissorhands), 1990
 Pencil on paper
 11 x 9" (27.9 x 22.9 cm), sent framed: 18x15"
 Private collection



TIM BURTON American, born 1958
Untitled (Edward Scissorhands), 1990
 Pen and ink and colored pencil on paper
 7 1/2 x 3" (19.1 x 7.6 cm)
 Mat: 13 x 8 1/2" (33 x 21.6 cm)
 Private collection



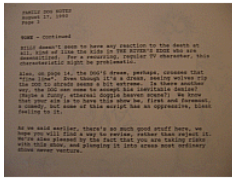
TIM BURTON American, born 1958
Untitled (Edward Scissorhands), 1990
 Photocopy with added color on paper
 Image: 11 x 8 1/4" (27.9 x 21 cm)
 Mat: 16 1/2 x 14 1/4" (41.9 x 36.2 cm)
 Private collection



TIM BURTON American, born 1958
Untitled (Edward Scissorhands), 1990
 Pen, ink and pencil on paper
 Image: 14 1/4 x 9" (36.2 x 22.9 cm)
 Mat: 20 1/4 x 15" (51.4 x 38.1 cm)
 Private collection



TWENTIETH CENTURY FOX
Cookie-making robot from Edward Scissorhands, 1990
 Mixed mediums
 91 x 18 1/2 x 8" (231.1 x 47 x 20.3 cm)
 Private collection



UNIVERSAL
Typed notes, Family Dog, 1990
 Ink on paper, typewritten
 11 x 8 1/2" (27.9 x 21.6 cm)
 Private collection



UNKNOWN ARTIST
Edward Scissorhands lobby card, 1990
 Lobby card
 9 1/2 x 13 1/2" (24.1 x 34.3 cm)
 The Museum of Modern Art, New York



UNKNOWN ARTIST
Edward Scissorhands lobby card, 1990
 Lobby card
 9 1/2 x 13 1/2" (24.1 x 34.3 cm)
 The Museum of Modern Art, New York



Photo: SAM WINSTON
Edward Scissorhands, 1990
 Poster
 40 x 27" (101.6 x 68.6 cm)
 The Museum of Modern Art, New York



TIM BURTON American, born 1958
Untitled (Miscellaneous), 1990-1993
 Pen and ink and watercolor on paper
 11 x 9" (27.9 x 22.9 cm)
 Private collection



COLLEEN ATWOOD American
STAN WINSTON STUDIOS
Edward Scissorhands costume, c. 1990
Leather, rubber, metal, and resin
68 x 57 x 34", 50 lb. (172.7 x 144.8 x 86.4 cm, 22.7 kg)
On loan from the family of Stan Winston



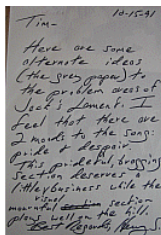
STAN WINSTON STUDIOS
JOHN ROSENGRANT American, born 1958
Scissorhands sketch, c. 1990
Pencil on paper
23 1/4" x 18" (59.1 x 45.7 cm)
On loan from the family of Stan Winston



STAN WINSTON STUDIOS
IAN STEVENSON American, born 1965
Scissorhands sketch, c. 1990
Pencil on paper
16 1/2 x 14" (41.9 x 35.6 cm) mount: black
On loan from the family of Stan Winston



STAN WINSTON STUDIOS
SHANE MAHAN American, born 1963
Scissorhands sketch, c. 1990
Pencil on paper
14 x 16 1/2" (35.6 x 41.9 cm)
On loan from the family of Stan Winston



HENRY SELICK American, born 1952
Letter from Henry Selick to Tim Burton, 1991
Ink on paper
10 x 8" (25.4 x 20.3 cm)
Private collection



Batman Returns, 1992
Poster
40 x 27" (101.6 x 68.6 cm)
The Museum of Modern Art, New York



TIM BURTON American, born 1958
Blue baby with nails, 1992
Plastic doll, metal pins, cloth and paint
16 x 12 x 5" (40.6 x 30.5 x 12.7 cm)
Private collection



TIM BURTON American, born 1958
Untitled (Batman Returns), 1992
 Pen and ink on paper
 14 x 11" (35.6 x 27.9 cm)
 Private collection



TIM BURTON American, born 1958
Untitled (Batman Returns), 1992
 Pen and ink on paper
 14 x 11" (35.6 x 27.9 cm)
 Private collection



TIM BURTON American, born 1958
Untitled (Batman Returns), 1992
 Watercolor and colored pencil on paper
 12 x 9" (30.5 x 22.9 cm)
 Private collection



TIM BURTON American, born 1958
Untitled (Batman Returns), 1992
 Pen and ink and black pencil on paper
 14 x 11" (35.6 x 27.9 cm)
 Private collection



TIM BURTON American, born 1958
Untitled (Batman Returns), 1992
 Pen and ink and colored pencil on paper
 Image: 10 1/4 x 8" (26 x 20.3 cm)
 Mat: 15 x 12 1/2" (38.1 x 31.8 cm)
 Private collection



TIM BURTON American, born 1958
Untitled (Batman Returns), 1992
 Pen, ink and black pencil on paper
 Image: 14 x 10 1/4" (35.6 x 26 cm)
 Mat: 20 x 16" (50.8 x 40.6 cm)
 Private collection



TIM BURTON American, born 1958
Untitled (Batman Returns), 1992
 Oil on canvas
 10 x 8" (25.4 x 20.3 cm)
 Private collection



TIM BURTON American, born 1958
Untitled (Batman Returns), 1992
 Pen and ink, watercolor, colored pencil and correction fluid on paper
 14 x 11" (35.6 x 27.9 cm)
 Private collection



TIM BURTON American, born 1958
Untitled (Clown Series), 1992
 Acrylic on canvas
 7 x 5" (17.8 x 12.7 cm)
 Private collection



TIM BURTON American, born 1958
Untitled (Corpse Boy), 1992
 Acrylic on black velvet
 15 x 12" (38.1 x 30.5 cm)
 Private collection



TIM BURTON American, born 1958
Untitled (Creature Series), 1992
 Acrylic on canvas
 7 x 5" (17.8 x 12.7 cm)
 Private collection



TIM BURTON American, born 1958
Untitled (Creature Series), 1992
 Acrylic on black velvet
 10 x 8 x 1" (25.4 x 20.3 x 2.5 cm)
 Private collection



TIM BURTON American, born 1958
Untitled (Ghost Dogs), 1992
 Oil on black velvet
 15 x 12" (38.1 x 30.5 cm)
 Private collection



TIM BURTON American, born 1958
Untitled (Miscellaneous), 1992
 Acrylic on black velvet
 7 x 5" (17.8 x 12.7 cm)
 Private collection



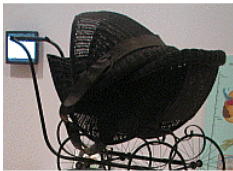
TIM BURTON American, born 1958
Untitled (The Nightmare Before Christmas), 1992
 Pen and ink, watercolor, colored pencil and graphite on paper
 Image: 10 1/4 x 13 3/4" (26 x 34.9 cm)
 Mat: 15 1/2 x 19 1/2" (39.4 x 49.5 cm)
 Private collection



BOB RINGWOOD British, born 1946
Batman Returns catwoman gloves, 1992
 Polyurethane-coated nylon
 Approx.: 12 x 6 x 2" (30.5 x 15.2 x 5.1 cm)
 Private collection



BOB RINGWOOD British, born 1946
Batman Returns Catwoman suit, 1992
 Polyurethane-coated nylon
 57 x 32 x 1/16" (144.8 x 81.3 x 0.2 cm)
 Courtesy of Warner Bros. Entertainment Inc.



BOB RINGWOOD British, born 1946
Batman Returns Penguin baby carriage, 1992
 Wicker, metal, leather, and paint
 46" long, 39" tall, 21" wide
 Courtesy of Warner Bros. Entertainment Inc.



TIM BURTON American, born 1958
Untitled (3 Sunflowers in Desert), 1992-1999
 Polaroid
 Approx. 33 x 22" (83.8 x 55.9 cm)
 Private collection



TIM BURTON American, born 1958
Untitled (Antlers Above Dog - Poppy), 1992-1999
 Polaroid
 Approx. 33 x 22" (83.8 x 55.9 cm)
 Private collection



TIM BURTON American, born 1958
Untitled (Black Flower), 1992-1999
 Polaroid
 Approx. 33 x 22" (83.8 x 55.9 cm)
 Private collection



TIM BURTON American, born 1958
Untitled (Blue Baby with Pins on Red Velvet), 1992-1999
 Polaroid
 Approx. 33 x 22" (83.8 x 55.9 cm)
 Private collection



TIM BURTON American, born 1958
Untitled (Blue Girl with Bouquet), 1992-1999
 Polaroid
 Approx. 33 x 22" (83.8 x 55.9 cm)
 Private collection



TIM BURTON American, born 1958
Untitled (Blue Girl with Leg), 1992-1999
 Polaroid
 Approx. 33 x 22" (83.8 x 55.9 cm)
 Private collection



TIM BURTON American, born 1958
Untitled (Blue Girl with Nails in Doll), 1992-1999
 Polaroid
 Approx. 33 x 22" (83.8 x 55.9 cm)
 Private collection



TIM BURTON American, born 1958
Untitled (Blue Girl with Skull), 1992-1999
 Polaroid
 Approx. 33 x 22" (83.8 x 55.9 cm)
 Private collection



TIM BURTON American, born 1958
Untitled (Blue Girls with Eyes), 1992-1999
 Polaroid
 Approx. 33 x 22" (83.8 x 55.9 cm)
 Private collection



TIM BURTON American, born 1958
Untitled (Cactus with Eyes), 1992-1999
 Polaroid
 Approx. 33 x 22" (83.8 x 55.9 cm)
 Private collection



TIM BURTON American, born 1958
Untitled (Cactus with Eyes), c. 1992-1999
 Metal, plastic and plaster
 24 x 12 x 12" (61 x 30.5 x 30.5 cm)
 Private collection



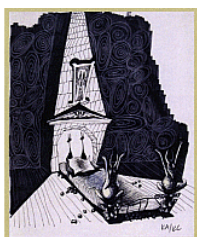
TIM BURTON American, born 1958
Untitled (Pierced Baby Doll Against Stripes), 1992-1999
 Polaroid
 Approx. 33 x 22" (83.8 x 55.9 cm)
 Private collection



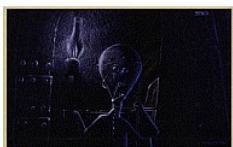
TIM BURTON American, born 1958
Untitled (Pink and Blue Deer in Desert), 1992-1999
 Polaroid
 Approx. 33 x 22" (83.8 x 55.9 cm)
 Private collection



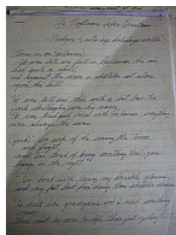
TIM BURTON American, born 1958
Untitled (Seahorses on Pink Tree), 1992-1999
 Polaroid
 Approx. 33 x 22" (83.8 x 55.9 cm)
 Private collection



KELLY ASBURY American, born 1960
 KENDAL CRONKHITE Canadian, born 1961
The Nightmare Before Christmas architectural elements, 1993
 Marker, ink and colored pencil on paper
 11 x 8 1/2" (27.9 x 21.6 cm)
 Courtesy of Animation Research Library, Walt Disney Animation Studios, Burbank, California



BILL BOES American, born 1963
The Nightmare Before Christmas Dr. Finklestein, 1993
 Pastel and colored pencil on paper
 8 3/4 x 14" (22.2 x 35.6 cm)
 Courtesy of Animation Research Library, Walt Disney Animation Studios, Burbank, California



TIM BURTON American, born 1958
The Nightmare Before Christmas handwritten prologue, 1993
 Photocopy
 10 x 8" (25.4 x 20.3 cm)
 Private collection



TIM BURTON American, born 1958
The Nightmare Before Christmas storyboard, 1993
 Colored pencil and correction fluid on black paper
 5 x 7" (12.7 x 17.8 cm)
 Private collection



TIM BURTON American, born 1958
The Nightmare Before Christmas storyboard, 1993
 Pen and ink, watercolor wash and colored pencil on paper
 5 x 7" (12.7 x 17.8 cm)
 Private collection



TIM BURTON American, born 1958
The Nightmare Before Christmas storyboard, 1993
 Pen and ink, watercolor wash and colored pencil on paper
 5 x 7" (12.7 x 17.8 cm)
 Private collection



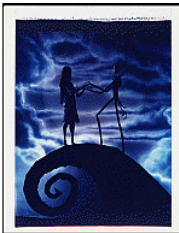
TIM BURTON American, born 1958
The Nightmare Before Christmas storyboard, 1993
 Pen and ink, watercolor wash and colored pencil on paper
 5 x 7" (12.7 x 17.8 cm)
 Private collection



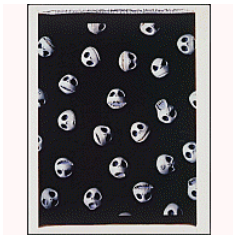
TIM BURTON American, born 1958
Untitled (Clown Series), 1993
 Oil on canvas
 12 x 9" (30.5 x 22.9 cm)
 Private collection



TIM BURTON American, born 1958
Untitled (Corpse Boy), 1993
 Polaroid
 33 x 22" (83.8 x 55.9 cm)
 Private collection



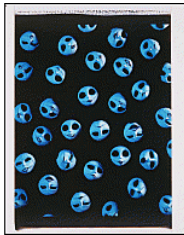
TIM BURTON American, born 1958
Untitled (Jack and Sally), 1993
 Polaroid
 33 x 22" (83.8 x 55.9 cm)
 Private collection



TIM BURTON American, born 1958
Untitled (Jack heads), 1993
 Polaroid
 33 x 22" (83.8 x 55.9 cm)
 Private collection



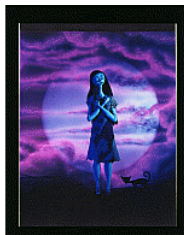
TIM BURTON American, born 1958
Untitled (Mermaid), 1993
 Polaroid
 33 x 22" (83.8 x 55.9 cm)
 Private collection



TIM BURTON American, born 1958
Untitled (Sally heads), 1993
 Polaroid
 33 x 22" (83.8 x 55.9 cm)
 Private collection



TIM BURTON American, born 1958
Untitled (Sally parts), 1993
 Polaroid
 33 x 22" (83.8 x 55.9 cm)
 Private collection



TIM BURTON American, born 1958
Untitled (Sally), 1993
 Polaroid
 33 x 22" (83.8 x 55.9 cm)
 Private collection



TIM BURTON American, born 1958
Untitled (The Nightmare Before Christmas - Jack and Reindeer), 1993
 Pen and ink on paper
 14 x 11" (35.6 x 27.9 cm)
 Private collection



TIM BURTON American, born 1958
Untitled (The Nightmare Before Christmas - Lock, Stock, and Barrel), 1993
 Pen and ink, watercolor wash and colored pencil on paper
 6 x 7" (15.2 x 17.8 cm)
 Private collection



TIM BURTON American, born 1958
Untitled (The Nightmare Before Christmas - Zero), 1993
 Pen and ink, watercolor wash and colored pencil on paper
 8 x 9" (20.3 x 22.9 cm)
 Private collection



TIM BURTON American, born 1958
Untitled (The Nightmare Before Christmas), 1993
 Pen and ink and colored pencil on paper
 8 x 5" (20.3 x 12.7 cm)
 Private collection



TIM BURTON American, born 1958
Untitled (The Nightmare Before Christmas), 1993
 Pen and ink and watercolor wash on paper
 9 1/2 x 4 1/4" (24.1 x 10.8 cm)
 Mat: 11 x 6" (27.9 x 15.2 cm)
 Private collection



TIM BURTON American, born 1958
Untitled (The Nightmare Before Christmas), 1993
 Pen and ink and watercolor on oversized storyboard laid down on paper
 Image: 11 x 14" (27.9 x 35.6 cm)
 Mat: 13 x 16" (33 x 40.6 cm)
 Private collection



TIM BURTON American, born 1958
Untitled (The Nightmare Before Christmas), 1993
 Photocopy with added color on paper
 8 x 11" (20.3 x 27.9 cm)
 Private collection



TIM BURTON American, born 1958
Untitled (The Nightmare Before Christmas), 1993
 Photocopy with added color on paper
 8 x 11" (20.3 x 27.9 cm)
 Private collection



TIM BURTON American, born 1958
Untitled (The Nightmare Before Christmas), 1993
 Pen, ink and colored pencil on paper
 12 x 9" (30.5 x 22.9 cm)
 Private collection



TIM BURTON American, born 1958
Untitled (The Nightmare Before Christmas), 1993
 Pen, ink and watercolor wash on paper
 11 x 9" (27.9 x 22.9 cm)
 Private collection



TIM BURTON American, born 1958
Untitled (Vampire), 1993
 Polaroid
 33 x 22" (83.8 x 55.9 cm)
 Private collection



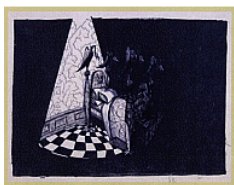
TIM BURTON American, born 1958
Untitled (Vampire), 1993
 Polaroid
 33 x 22" (83.8 x 55.9 cm)
 Private collection



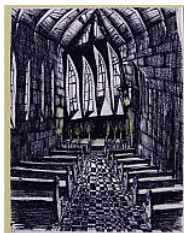
TIM BURTON American, born 1958
Untitled (Wolfman), 1993
 Polaroid
 33 x 22" (83.8 x 55.9 cm)
 Private collection



TIM BURTON American, born 1958
Untitled (Zero), 1993
 Polaroid
 33 x 22" (83.8 x 55.9 cm)
 Private collection



KENDAL CRONKHITE Canadian, born 1961
The Nightmare Before Christmas Bedrooms, 1993
 Marker, ink and photocopy on paper
 11 x 17" (27.9 x 43.2 cm)
 Courtesy of Animation Research Library, Walt Disney Animation Studios, Burbank, California



KENDAL CRONKHITE Canadian, born 1961
The Nightmare Before Christmas interiors, 1993
 Colored pencil, ink and photocopy on paper
 11 x 8 1/2" (27.9 x 21.6 cm)
 Courtesy of Animation Research Library, Walt Disney Animation Studios, Burbank, California



JOE RANFT American, 1960-2005
Jack Skellington storyboards, 1993
 Ink on photocopy
 10 x 8" (25.4 x 20.3 cm)
 Private collection



JOE RANFT American, 1960-2005
The Nightmare Before Christmas storyboards, 1993
 Ink, graphite, colored pencil and marker on paper
 6 storyboards: Each: 5 1/2 x 8" (14 x 20.3 cm)
 Courtesy of Animation Research Library, Walt Disney Animation Studios, Burbank, California



JOE RANFT American, 1960-2005
The Nightmare Before Christmas storyboards, 1993
 Ink, graphite, colored pencil and marker on paper
 6 storyboards: Each: 5 1/2 x 8" (14 x 20.3 cm)
 Courtesy of Animation Research Library, Walt Disney Animation Studios, Burbank, California



SKELLINGTON PRODUCTIONS
The Nightmare Before Christmas (Bound Sally), 1993
 Foam latex, aluminum and steel
 7 x 13 x 7" (17.8 x 33 x 17.8 cm)
 Courtesy of Animation Research Library, Walt Disney Animation Studios, Burbank, California



SKELLINGTON PRODUCTIONS
The Nightmare Before Christmas (Bound Santa), 1993
 Foam latex, aluminum and steel
 9 x 16 x 10" (22.9 x 40.6 x 25.4 cm)
 Courtesy of Animation Research Library, Walt Disney Animation Studios, Burbank, California



SKELLINGTON PRODUCTIONS
The Nightmare Before Christmas (Clown with Tearaway Face), 1993
 Foam latex, aluminum and steel
 14 x 11 x 11" (35.6 x 27.9 x 27.9 cm)
 Courtesy of Animation Research Library, Walt Disney Animation Studios, Burbank, California



SKELLINGTON PRODUCTIONS
The Nightmare Before Christmas (Dr. Finklestein), 1993
 Foam latex, aluminum and steel
 10 x 8 x 8" (25.4 x 20.3 x 20.3 cm)
 Courtesy of Animation Research Library, Walt Disney Animation Studios, Burbank, California



SKELLINGTON PRODUCTIONS

The Nightmare Before Christmas (Dr. Finklestein's mate), 1993

Foam latex, aluminum and steel

17 x 6 x 6" (43.2 x 15.2 x 15.2 cm)

Courtesy of Animation Research Library, Walt Disney Animation Studios, Burbank, California



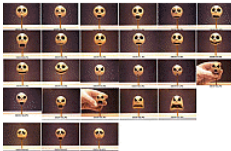
SKELLINGTON PRODUCTIONS

The Nightmare Before Christmas (Fat vampire), 1993

Foam latex, aluminum and steel

12 x 14 x 14" (30.5 x 35.6 x 35.6 cm)

Courtesy of Animation Research Library, Walt Disney Animation Studios, Burbank, California



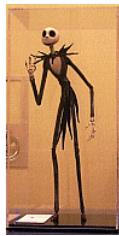
SKELLINGTON PRODUCTIONS

The Nightmare Before Christmas (Jack heads), 1993

Foam latex, aluminum and steel

26 heads, approx. 1 1/2" X 1 1/2" X 1 1/2"

Courtesy of Animation Research Library, Walt Disney Animation Studios, Burbank, California



SKELLINGTON PRODUCTIONS

The Nightmare Before Christmas (Jack), 1993

Foam latex, aluminum and steel

19 x 9 x 9" (48.3 x 22.9 x 22.9 cm)

Courtesy of Animation Research Library, Walt Disney Animation Studios, Burbank, California



SKELLINGTON PRODUCTIONS

The Nightmare Before Christmas (Mr. Hyde), 1993

Foam latex, aluminum and steel

16 x 11 x 11" (40.6 x 27.9 x 27.9 cm)

Courtesy of Animation Research Library, Walt Disney Animation Studios, Burbank, California



SKELLINGTON PRODUCTIONS

The Nightmare Before Christmas (Oogie Boogie), 1993

Foam latex, aluminum and steel

22 x 19 x 10" (55.9 x 48.3 x 25.4 cm)

Courtesy of Animation Research Library, Walt Disney Animation Studios, Burbank, California



SKELLINGTON PRODUCTIONS

The Nightmare Before Christmas (Reindeer), 1993

Foam latex, aluminum and steel

13 x 5 x 10" (33 x 12.7 x 25.4 cm)

Courtesy of Animation Research Library, Walt Disney Animation Studios, Burbank, California



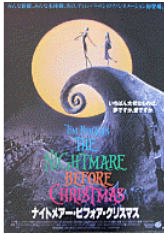
SKELLINGTON PRODUCTIONS

The Nightmare Before Christmas (Skinny vampire with umbrella), 1993

Foam latex, aluminum and steel

16 x 9 x 9" (40.6 x 22.9 x 22.9 cm)

Courtesy of Animation Research Library, Walt Disney Animation Studios, Burbank, California



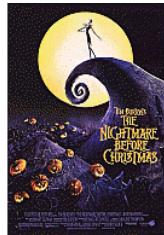
UNKNOWN ARTIST

The Nightmare Before Christmas, 1993

Poster

29 x 20" (73.7 x 50.8 cm)

The Museum of Modern Art, New York



UNKNOWN ARTIST

The Nightmare Before Christmas, 1993

Poster

40 x 27" (101.6 x 68.6 cm)

The Museum of Modern Art, New York



UNKNOWN ARTIST

The Nightmare Before Christmas dungeons, 1993

Colored pencil, graphite and pastel on paper

11 x 17" (27.9 x 43.2 cm)

Courtesy of Animation Research Library, Walt Disney Animation Studios, Burbank, California



UNKNOWN ARTIST

The Nightmare Before Christmas photobusto, 1993

Photobusto

17 7/8 x 25" (45.4 x 63.5 cm)

The Museum of Modern Art, New York



UNKNOWN ARTIST

The Nightmare Before Christmas photobusto, 1993

Photobusto

17 7/8 x 25" (45.4 x 63.5 cm)

The Museum of Modern Art, New York



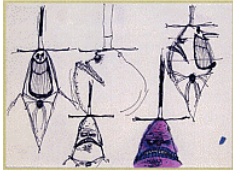
CHRISTOPHER URE American, born 1969

The Nightmare Before Christmas Dr. Finklestein, 1993

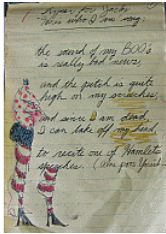
Ink on paper

8 x 5 1/2" (20.3 x 14 cm)

Courtesy of Animation Research Library, Walt Disney Animation Studios, Burbank, California



CHRISTOPHER URE American, born 1969
The Nightmare Before Christmas Mayor, 1993
 Marker, ink and colored pencil on paper
 5 1/2 x 8" (14 x 20.3 cm)
 Courtesy of Animation Research Library, Walt Disney Animation Studios, Burbank, California



TIM BURTON American, born 1958
Draft of lyrics for The Nightmare Before Christmas, c. 1993
 Sketchbook
 8 x 5" (20.3 x 12.7 cm)
 Private collection



TIM BURTON American, born 1958
Untitled (Blue Clown), 1993-1997
 Oil and acrylic on canvas
 30 x 36" (76.2 x 91.4 cm)
 Private collection



TIM BURTON American, born 1958
Untitled (Three-Eyed Clown), 1993-1997
 Oil and acrylic on canvas
 36 x 48" (91.4 x 121.9 cm)
 Private collection



COLLEEN ATWOOD American
Ed Wood angora sweater, 1994
 Angora
 24 X 24 X 8"
 Manufacturer: Adele Recklies Company
 Courtesy of Walt Disney Archives



MANUFACTURER: BLT AND ASSOCIATES
Ed Wood, 1994
 Poster
 29 x 20" (73.7 x 50.8 cm)
 The Museum of Modern Art, New York



MANUFACTURER: BLT AND ASSOCIATES
Ed Wood, 1994
 Poster
 41 x 27" (104.1 x 68.6 cm)
 The Museum of Modern Art, New York



TIM BURTON American, born 1958
Untitled (Creature Series), 1994
 Pen and ink and watercolor wash on paper
 5 x 8" (12.7 x 20.3 cm)
 Private collection



TIM BURTON American, born 1958
Untitled (Creature Series), 1994
 Pen and ink on paper
 9 x 13" (22.9 x 33 cm)
 Private collection



TIM BURTON American, born 1958
Untitled (Creature Series), 1994
 Pen and ink, watercolor wash and watercolor on paper
 10 x 12" (25.4 x 30.5 cm)
 Private collection



TIM BURTON American, born 1958
Untitled (Creature Series), 1994
 Pen and ink, watercolor and colored pencil on paper
 11 x 11" (27.9 x 27.9 cm)
 Private collection



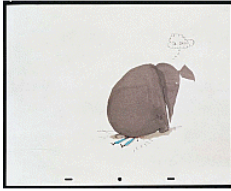
TIM BURTON American, born 1958
Untitled (Creature Series), 1994
 Pen and ink, pastel and marker on paper
 16 x 11" (40.6 x 27.9 cm)
 Private collection



TIM BURTON American, born 1958
Untitled (Creature Series), 1994
 Pen and ink on paper
 14 x 12" (35.6 x 30.5 cm)
 Private collection



TIM BURTON American, born 1958
Untitled (Creature Series), 1994
 Pen and ink, watercolor wash and colored pencil on paper
 14 x 17" (35.6 x 43.2 cm)
 Private collection



TIM BURTON American, born 1958
Untitled (Creature Series), 1994
 Pen and ink, watercolor wash and colored pencil on paper
 13 x 16" (33 x 40.6 cm)
 Private collection



TIM BURTON American, born 1958
Untitled (Creature Series), 1994
 Pen and ink, watercolor wash and colored pencil on paper
 10 x 9" (25.4 x 22.9 cm)
 Private collection



TIM BURTON American, born 1958
Untitled (Creature Series), 1994
 Pen and ink and watercolor wash on paper
 10 x 9" (25.4 x 22.9 cm)
 Private collection



TIM BURTON American, born 1958
Untitled (Creature Series), 1994
 Pen and ink and watercolor wash on paper
 11 x 13" (27.9 x 33 cm)
 Private collection



TIM BURTON American, born 1958
Untitled (Creature Series), 1994
 Pen and ink, watercolor wash and colored pencil on paper
 12 x 10" (30.5 x 25.4 cm)
 Private collection



TIM BURTON American, born 1958
Untitled (Creature Series), 1994
 Pen and ink and pastel on paper
 5 x 4" (12.7 x 10.2 cm)
 Private collection



TIM BURTON American, born 1958
Untitled (Miscellaneous), 1994
 Acrylic on canvas
 20 x 16" (50.8 x 40.6 cm)
 Private collection



TIM BURTON American, born 1958
Untitled (The Nightmare Before Christmas), 1994
 Pen, ink, watercolor wash, colored pencil, collage elements and correction fluid on black paper.
 24 x 18" (61 x 45.7 cm)
 Private collection



TIM BURTON American, born 1958
Untitled (Unnatural History - Spider Cactus), 1994
 Polaroid
 33 x 22" (83.8 x 55.9 cm)
 Private collection



TIM BURTON American, born 1958
Untitled (Unnatural History - Sunflower), 1994
 Polaroid
 33 x 22" (83.8 x 55.9 cm)
 Private collection



Ed Wood funhouse panels, 1994
 Tin supported on rolling A-frames
 101 x 76 x 32" (256.5 x 193 x 81.3 cm)
 Private collection



COLIN BATTY
Mars Attacks! Balloon Brain, 1995
 Pencil on paper
 14 3/16 x 10 5/8" (36 x 27 cm)
 Courtesy of Mackinnon & Saunders, Manchester, UK



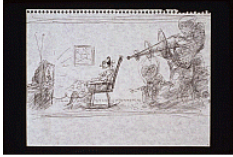
Directed by TIM BURTON American, born 1958
 Animator: PHIL DALE
 Animator: BARRY PURVES
Mars Attacks! stop-motion test, 1995
 Digital video (color, silent), approx. 2 min.
 The Museum of Modern Art, New York.
 Restoration of stop frame animation tests for Mars Attacks! courtesy of Mackinnon & Saunders/Flix Facilities
 Copyright Warner Bros.



TIM BURTON American, born 1958
Untitled (Animal Series), 1995
 Pastel on paper
 17 x 14" (43.2 x 35.6 cm)
 Private collection



TIM BURTON American, born 1958
Untitled (Boy Series), 1995
 Pastel, watercolor and acrylic on paper
 17 x 14" (43.2 x 35.6 cm)
 Private collection



TIM BURTON American, born 1958
Untitled (Mars Attacks!), 1995
 Pen and ink and crayon on paper
 9 x 12" (22.9 x 30.5 cm)
 Private collection



TIM BURTON American, born 1958
Untitled (Mars Attacks!), 1995
 Watercolor and graphite on paper
 17 x 14" (43.2 x 35.6 cm)
 Private collection



TIM BURTON American, born 1958
Untitled (Mars Attacks!), 1995
 Watercolor on paper
 17 x 14" (43.2 x 35.6 cm)
 Private collection



TIM BURTON American, born 1958
Untitled (Mars Attacks!), 1995
 Watercolor graphite on paper
 Image: 10 x 8 1/2" (25.4 x 21.6 cm)
 Mat: 15 x 13" (38.1 x 33 cm)
 Private collection



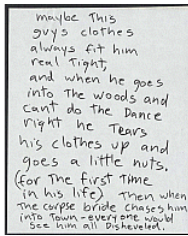
TIM BURTON American, born 1958
Untitled (Mars Attacks!), 1995
 Watercolor and pastel on paper
 Image: 17 x 14" (43.2 x 35.6 cm)
 Mat: 21 1/2 x 18 1/2" (54.6 x 47 cm)
 Private collection



TIM BURTON American, born 1958
Untitled (Mars Attacks!), 1995
 Watercolor wash and pastel on paper
 Image: 14 x 17" (35.6 x 43.2 cm)
 Mat: 20 x 23" (50.8 x 58.4 cm)
 Private collection



MACKINNON & SAUNDERS
Mars Attacks! Martian armature, 1995
 Metal and resin
 With Base: 15 3/8 x 4 x 4" (39.1 x 10.2 x 10.2 cm)
 Courtesy of Mackinnon & Saunders, Manchester, UK



JOE RANFT American, 1960-2005
Corpse Bride caption, 1995
 Pen and ink on paper
 7 x 6" (17.8 x 15.2 cm)
 Private collection



JOE RANFT American, 1960-2005
Corpse Bride caption, 1995
 Pen and ink, watercolor wash and colored pencil on paper
 11 x 9" (27.9 x 22.9 cm)
 Private collection



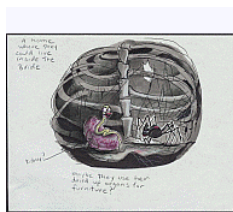
JOE RANFT American, 1960-2005
Corpse Bride caption, 1995
 Pen and ink, watercolor wash and colored pencil on paper
 11 x 9" (27.9 x 22.9 cm)
 Private collection



JOE RANFT American, 1960-2005
Corpse Bride caption, 1995
 Pen and ink, watercolor wash and colored pencil on paper
 11 x 9" (27.9 x 22.9 cm)
 Private collection



JOE RANFT American, 1960-2005
Corpse Bride caption, 1995
 Pen and ink, watercolor wash and colored pencil on paper
 11 x 9" (27.9 x 22.9 cm)
 Private collection



JOE RANFT American, 1960-2005
Corpse Bride drawing, 1995
 Pen and ink, watercolor wash and colored pencil on paper
 9 x 11" (22.9 x 27.9 cm)
 Private collection



JOE RANFT American, 1960-2005
Corpse Bride drawing, 1995
 Pen and ink, watercolor wash and colored pencil on paper
 11 x 9" (27.9 x 22.9 cm)
 Private collection



Space saucer with dents, 1995-1996
 Painted wood
 separates into 2 parts: 7"h x 12"diam. and 3"h x 8" diam
 Component: 3 x 8" (7.6 x 20.3 cm)
 Component: 7 x 12" (17.8 x 30.5 cm)
 Private collection



TIM BURTON American, born 1958
Untitled (Corpse Bride), 1995-1998
 Pen and ink on paper
 11 x 9" (27.9 x 22.9 cm)
 Private collection



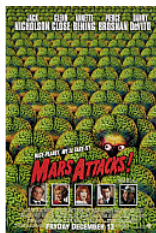
TIM BURTON American, born 1958
Untitled (Corpse Bride), 1995-1998
 Pen and ink, watercolor, crayon and correction fluid on paper
 11 x 14" (27.9 x 35.6 cm)
 Private collection



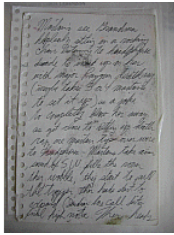
TIM BURTON American, born 1958
Untitled (Corpse Bride), 1995-1998
 Pen and ink and colored pencil on paper
 12 x 8" (30.5 x 20.3 cm)
 Private collection



TIM BURTON American, born 1958
Untitled (I'll Never Forget Her Face...on Hotel BelAir notepad), c. 1995
 Pen and ink and watercolor on paper
 5 1/2 x 4" (14 x 10.2 cm)
 Private collection



Designer: BEMIS BALKIND
Mars Attacks!, 1996
 Poster
 40 x 27" (101.6 x 68.6 cm)
 The Museum of Modern Art, New York



TIM BURTON American, born 1958
Mars Attacks! notes, 1996
 Ink on paper
 8 1/2 x 5 1/2" (21.6 x 14 cm)
 Private collection



TIM BURTON American, born 1958
Surrounded, 1996
 Oil and acrylic on canvas
 36 x 48" (91.4 x 121.9 cm)
 Private collection



TIM BURTON American, born 1958
Untitled (Girl Series), 1996
 Pen and ink, watercolor and colored pencil on paper
 17 x 14" (43.2 x 35.6 cm)
 Private collection



TIM BURTON American, born 1958
Untitled (Mars Attacks! Martian Robot), 1996
 Pen and ink on paper
 8 x 5 1/2" (20.3 x 14 cm)
 Private collection



TIM BURTON American, born 1958
Untitled (Mars Attacks!), 1996
 Pastel and acrylic on paper
 11 x 8" (27.9 x 20.3 cm)
 Private collection



TIM BURTON American, born 1958
Untitled (Mars Attacks!), 1996
 Watercolor and black crayon on paper
 Image: 14 x 17" (35.6 x 43.2 cm)
 Mat: 18 1/2 x 21 1/2" (47 x 54.6 cm)
 Private collection



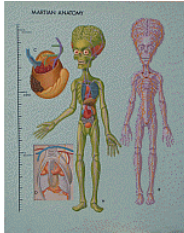
TIM BURTON American, born 1958
Untitled (Mars Attacks!), 1996
 Watercolor wash and glitter on paper
 13 x 10" (33 x 25.4 cm)
 Private collection



TIM BURTON American, born 1958
Untitled (Mars Attacks!), 1996
 Watercolor, glitter and crayon on paper
 17 x 14" (43.2 x 35.6 cm)
 Private collection



TIM BURTON American, born 1958
Untitled (Poppy Dog), 1996
 Oil on canvas
 8 x 10" (20.3 x 25.4 cm)
 Private collection



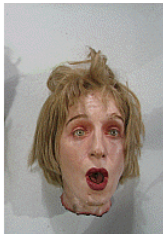
JULES KMETZKO American, born 1957
Martian Anatomy painting, 1996
 Acrylic on fabric
 60 x 48 x 5/8" (152.4 x 121.9 x 1.6 cm)
 Courtesy of Warner Bros. Entertainment Inc.



MACKINNON & SAUNDERS
Donald Kessler Head, 1996
 Foam rubber
 16 x 16 x 16" (40.6 x 40.6 x 40.6 cm)
 Courtesy of Warner Bros. Entertainment Inc.



MACKINNON & SAUNDERS
Naked Martian puppet, 1996
 Metal, resin, foam latex and glass eyes
 14 x 6 x 3" (35.6 x 15.2 x 7.6 cm)
 Courtesy of Warner Bros. Entertainment Inc.



MACKINNON & SAUNDERS
Nathalie Lake head, 1996
 Foam rubber
 16 x 16 x 16" (40.6 x 40.6 x 40.6 cm)
 Courtesy of Warner Bros. Entertainment Inc.



MACKINNON & SAUNDERS
Space-suited Martian puppet, 1996
 Metal, plastic, resin, foam latex, silicone and glass eyes
 16 x 8 x 4" (40.6 x 20.3 x 10.2 cm)
 Courtesy of Mackinnon & Saunders, Manchester, UK



UNKNOWN ARTIST
Mars Attacks!, 1996
 Poster
 29 x 20" (73.7 x 50.8 cm)
 The Museum of Modern Art, New York



UNKNOWN ARTIST
Mars Attacks! Lobby card, 1996
 Lobby card
 8 1/4 x 11 3/4" (21 x 29.8 cm)
 The Museum of Modern Art, New York



UNKNOWN ARTIST
Mars Attacks! Lobby card, 1996
 Lobby card
 11 3/4 x 16 1/2" (29.8 x 41.9 cm)
 The Museum of Modern Art, New York



UNKNOWN ARTIST
Puppet (James and the Giant Peach), 1996
 Foam latex, aluminum and steel
 17 x 10 x 6" (43.2 x 25.4 x 15.2 cm)
 Courtesy of Walt Disney Archives



UNKNOWN ARTIST
Puppet (James and the Giant Peach), 1996
 Foam latex, aluminum and steel
 17 x 5 x 5" (43.2 x 12.7 x 12.7 cm)
 Courtesy of Walt Disney Archives



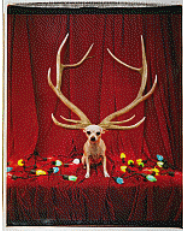
TIM BURTON American, born 1958
Untitled (The Melancholy Death of Oyster Boy and Other Stories), 1996-1997
 Ink and watercolor on paper
 16 1/4 x 13 1/4" (41.3 x 33.7 cm)
 Private collection



TIM BURTON American, born 1958
The Green Man, 1996-1998
 Oil and acrylic on canvas
 10 x 8" (25.4 x 20.3 cm)
 Private collection



TIM BURTON American, born 1958
Brain with coiled feelers, 1997
 Plastic and metal
 3 Brains, each approx.: 12 x 8 x 8" (30.5 x 20.3 x 20.3 cm)
 Private collection



TIM BURTON American, born 1958
Untitled (Christmas), 1997
 Polaroid
 33 x 22" (83.8 x 55.9 cm)
 Private collection



TIM BURTON American, born 1958
Untitled (Christmas), 1997
 Polaroid
 33 x 22" (83.8 x 55.9 cm)
 Private collection



TIM BURTON American, born 1958
Untitled (Christmas), 1997
 Polaroid
 33 x 22" (83.8 x 55.9 cm)
 Private collection



TIM BURTON American, born 1958
Untitled (Clown Series), 1997
 Watercolor and pastel on paper
 10 x 6" (25.4 x 15.2 cm)
 Private collection



TIM BURTON American, born 1958
Untitled (Corpse Bride), 1997
 Pen and ink and watercolor wash on paper
 8 x 5" (20.3 x 12.7 cm)
 Private collection



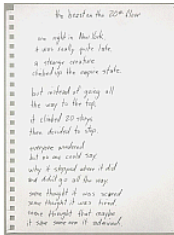
TIM BURTON American, born 1958
Untitled (The Melancholy Death of Oyster Boy and Other Stories Drawing - Staring Girl), 1997
 Pen and ink on paper
 8 x 5" (20.3 x 12.7 cm)
 Private collection



TIM BURTON American, born 1958
Untitled (The Melancholy Death of Oyster Boy and Other Stories), 1997
 Pen and ink on paper
 8 x 5" (20.3 x 12.7 cm)
 Private collection



TIM BURTON American, born 1958
Untitled (The Melancholy Death of Oyster Boy and Other Stories), 1997
 Pen and ink on paper
 8 x 5" (20.3 x 12.7 cm)
 Private collection



TIM BURTON American, born 1958
Untitled (The Melancholy Death of Oyster Boy and Other Stories), 1997
 Pen and ink on paper
 12 x 9" (30.5 x 22.9 cm)
 Private collection



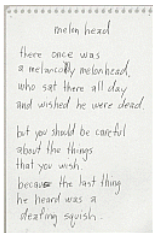
TIM BURTON American, born 1958
Untitled (The Melancholy Death of Oyster Boy and Other Stories), 1997
 Pen and ink on paper
 12 x 9" (30.5 x 22.9 cm)
 Private collection



TIM BURTON American, born 1958
Untitled (The Melancholy Death of Oyster Boy and Other Stories), 1997
 Pen and ink on paper
 12 x 9" (30.5 x 22.9 cm)
 Private collection



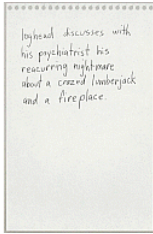
TIM BURTON American, born 1958
Untitled (The Melancholy Death of Oyster Boy and Other Stories), 1997
 Pen and ink on paper
 12 x 9" (30.5 x 22.9)
 Private collection



TIM BURTON American, born 1958
Untitled (The Melancholy Death of Oyster Boy and Other Stories), 1997
 Pen and ink on paper
 8 x 5" (20.3 x 12.7 cm)
 Private collection



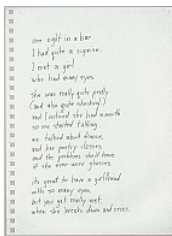
TIM BURTON American, born 1958
Untitled (The Melancholy Death of Oyster Boy and Other Stories), 1997
 Pen and ink on paper
 8 x 5" (20.3 x 12.7 cm)
 Private collection



TIM BURTON American, born 1958
Untitled (The Melancholy Death of Oyster Boy and Other Stories), 1997
 Pen and ink on paper
 8 x 5" (20.3 x 12.7 cm)
 Private collection



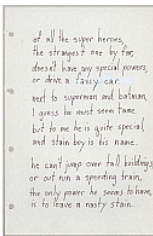
TIM BURTON American, born 1958
Untitled (The Melancholy Death of Oyster Boy and Other Stories), 1997
 Pen and ink, watercolor and pastel on paper
 8 x 5" (20.3 x 12.7 cm)
 Private collection



TIM BURTON American, born 1958
Untitled (The Melancholy Death of Oyster Boy and Other Stories), 1997
 Pen and ink on paper
 12 x 9" (30.5 x 22.9 cm)
 Private collection



TIM BURTON American, born 1958
Untitled (The Melancholy Death of Oyster Boy and Other Stories), 1997
 Pen and ink on paper
 8 x 5" (20.3 x 12.7 cm)
 Private collection



TIM BURTON American, born 1958
Untitled (The Melancholy Death of Oyster Boy and Other Stories), 1997
 Pen and ink on paper
 9 x 6" (22.9 x 15.2 cm)
 Private collection



TIM BURTON American, born 1958
Untitled (The Melancholy Death of Oyster Boy and Other Stories), 1997
 Pen and ink and watercolor wash on paper
 7 x 5" (17.8 x 12.7 cm)
 Private collection



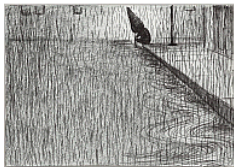
TIM BURTON American, born 1958
Untitled (The Melancholy Death of Oyster Boy and Other Stories), 1997
 Ink, watercolor, marker, and colored pencil on paper
 7 x 5" (17.8 x 12.7 cm)
 Private collection



TIM BURTON American, born 1958
Untitled (The Melancholy Death of Oyster Boy and Other Stories), 1997
 Pen and ink, colored pencil, silver and gold ink on paper
 7 x 6" (17.8 x 15.2 cm)
 Private collection



TIM BURTON American, born 1958
Untitled (The Melancholy Death of Oyster Boy and Other Stories), 1997
 Pen and ink and watercolor on paper
 Image: 14 x 7" (35.6 x 17.8 cm)
 Mat: 18 1/2 x 11 1/2" (47 x 29.2 cm)
 Private collection



TIM BURTON American, born 1958
Untitled (The Melancholy Death of Oyster Boy and Other Stories), 1997
 Pen, ink and pastel on paper
 5 x 7" (12.7 x 17.8 cm)
 Private collection



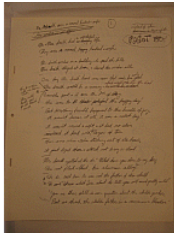
TIM BURTON American, born 1958
Untitled (Creature Series), 1997-1998
 Pastel on paper
 14 x 11" (35.6 x 27.9 cm)
 Private collection



TIM BURTON American, born 1958
Untitled (Girl Series), 1997-1998
 Watercolor and pastel on paper
 14 x 17" (35.6 x 43.2 cm)
 Private collection



TIM BURTON American, born 1958
Blue Girl with Wine, c. 1997
 Oil on canvas
 28 x 22" (71.1 x 55.9 cm)
 Private collection



TIM BURTON American, born 1958
Robot Boy handwritten notes, c. 1997
 Pen and ink on paper
 10 x 8" (25.4 x 20.3 cm)
 Private collection



TIM BURTON American, born 1958
Hollywood Gum commercial
Timex commercials
"Bones" music video, 1998, 2000, 2006
 Digital video (color, sound), approx. 6 min. total
 Private collection



TIM BURTON American, born 1958
Untitled (Creature Series), 1998
 Pen and ink on paper
 12 x 9" (30.5 x 22.9 cm)
 Private collection



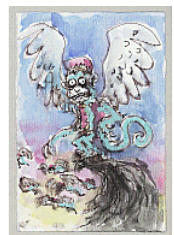
TIM BURTON American, born 1958
Untitled (Creature Series), 1998
 Pen and ink on paper
 12 x 9" (30.5 x 22.9 cm)
 Private collection



TIM BURTON American, born 1958
Untitled (Creature Series), 1998
 Pen and ink on paper
 12 x 9" (30.5 x 22.9 cm)
 Private collection



TIM BURTON American, born 1958
Untitled (Lost in Oz), 1998
 Watercolor and colored pencil on paper
 9 x 6" (22.9 x 15.2 cm)
 Private collection



TIM BURTON American, born 1958
Untitled (Lost in Oz), 1998
 Pen and ink and watercolor on paper
 6 x 4" (15.2 x 10.2 cm)
 Private collection



TIM BURTON American, born 1958
Untitled (Sleepy Hollow), 1998
 Pen and ink on paper
 12 x 9" (30.5 x 22.9 cm)
 Private collection



TIM BURTON American, born 1958
Untitled (Stitched Bride), 1998
 Watercolor and pastel on paper
 14 x 11" (35.6 x 27.9 cm)
 Private collection



TIM BURTON American, born 1958
Untitled (Superman Lives!), 1998
 Pen and ink on paper
 14 x 11" (35.6 x 27.9 cm)
 Private collection



TIM BURTON American, born 1958
Untitled (Superman Lives!), 1998
 Pen and ink on paper
 12 x 9" (30.5 x 22.9 cm)
 Private collection



TIM BURTON American, born 1958
Untitled (Superman Lives!), 1998
 Pen and ink, watercolor and pastel on paper
 14 x 11" (35.6 x 27.9 cm)
 Private collection



TIM BURTON American, born 1958
Untitled (Superman Lives!), 1998
 Pen and ink, watercolor and pastel on paper
 12 x 9" (30.5 x 22.9 cm)
 Private collection



TIM BURTON American, born 1958
Untitled (The Melancholy Death of Oyster Boy and Other Stories), 1998
 Pen and ink and watercolor on paper
 11 x 14" (27.9 x 35.6 cm)
 Private collection



MICHAEL ANTHONY JACKSON American, born 1958
 Additions by TIM BURTON American, born 1958
Gnome (Hollywood Gum), 1998
 Pencil and crayon on paper
 11 x 9" (27.9 x 22.9 cm)
 Private collection



MICHAEL ANTHONY JACKSON American, born 1958
 Additions by TIM BURTON American, born 1958
Gnome (Hollywood Gum), 1998
 Watercolor and pencil on paper
 11 x 9" (27.9 x 22.9 cm)
 Private collection



MICHAEL ANTHONY JACKSON American, born 1958
 Additions by TIM BURTON American, born 1958
Gnome (Hollywood Gum), 1998
 Watercolor, pencil and crayon on paper
 11 x 9" (27.9 x 22.9 cm)
 Private collection



MICHAEL ANTHONY JACKSON American, born 1958
 Additions by TIM BURTON American, born 1958
Gnome (Hollywood Gum), 1998
 Acrylic on photograph
 5 x 7" (12.7 x 17.8 cm)
 Private collection



TIM BURTON American, born 1958
Untitled (Sleepy Hollow), 1998-1999
 Pen and ink on paper
 6 x 9" (15.2 x 22.9 cm)
 Private collection



TIM BURTON American, born 1958
Untitled (Sleepy Hollow), 1998-1999
 Pen and ink on paper
 6 x 4" (15.2 x 10.2 cm)
 Private collection



COLLEEN ATWOOD American
Sleepy Hollow cape, 1999
 Mixed mediums
 108 x 36", 10 lb. (274.3 x 91.4 cm, 4.5 kg)
 Colleen Atwood



MANUFACTURER: BLT AND ASSOCIATES
Sleepy Hollow, 1999
 Poster
 40 x 27" (101.6 x 68.6 cm)
 The Museum of Modern Art, New York



UNKNOWN ARTIST
Sleepy Hollow lobby card, 1999
 Lobby card
 11 x 14 1/4" (27.9 x 36.2 cm)
 The Museum of Modern Art, New York



UNKNOWN ARTIST
Sleepy Hollow lobby card, 1999
 Lobby card
 11 x 14 1/4" (27.9 x 36.2 cm)
 The Museum of Modern Art, New York



Sleepy Hollow scarecrow, 1999
 Mixed mediums
 103 x 40 x 36" (261.6 x 101.6 x 91.4 cm)
 Private collection



TIM BURTON American, born 1958
Untitled (Planet of the Apes), 1999-2001
 Pastel on paper
 11 x 9" (27.9 x 22.9 cm)
 Private collection



TIM BURTON American, born 1958
Untitled (Planet of the Apes), 1999-2001
 Ink on paper
 12 x 9" (30.5 x 22.9 cm)
 Private collection



TIM BURTON American, born 1958
Untitled (Planet of the Apes), 1999-2001
 Ink, watercolor and pastel on paper
 8 x 9" (20.3 x 22.9 cm)
 Private collection



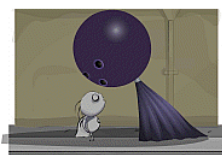
DOUG BRODE
[Doll], 2000
Planet of the Apes
 Human toy prop concept
 Pencil on paper
 17 x 11" (43.2 x 27.9 cm)
 On loan from the Twentieth Century Fox Archives



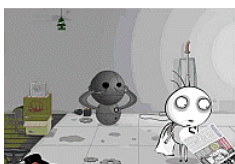
Written and directed by TIM BURTON American, born 1958
The World of Stainboy, Episode #1, 2000
 Macromedia Flash files transferred to DVD (color, sound), 3 min. 49 sec.
 3:49 min.
 Private collection



Written and directed by TIM BURTON American, born 1958
The World of Stainboy, Episode #2, 2000
 Macromedia Flash files transferred to DVD (color, sound), 4 min.
 4:00 min.
 Private collection



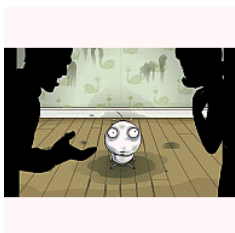
Written and directed by TIM BURTON American, born 1958
The World of Stainboy, Episode #3, 2000
 Macromedia Flash files transferred to DVD (color, sound), 4 min. 50 sec.
 4:50 min.
 Private collection



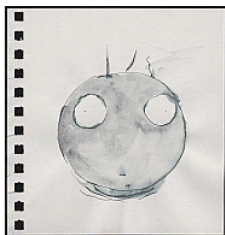
Written and directed by TIM BURTON American, born 1958
The World of Stainboy, Episode #4, 2000
 Macromedia Flash files transferred to DVD (color, sound), 3 min. 48 sec.
 3:48 min.
 Private collection



Written and directed by TIM BURTON American, born 1958
The World of Stainboy, Episode #5, 2000
 Macromedia Flash files transferred to DVD (color, sound), 2 min. 51 sec.
 2:51 min.
 Private collection



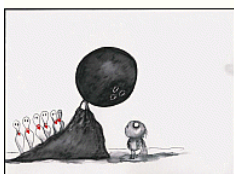
Written and directed by TIM BURTON American, born 1958
The World of Stainboy, Episode #6, 2000
 Macromedia Flash files transferred to DVD (color, sound), 5 min. 29 sec..
 5:29 min.
 Private collection



TIM BURTON American, born 1958
Untitled (The World of Stainboy), 2000
 Watercolor wash and pen and ink on paper
 6 x 6" (15.2 x 15.2 cm)
 Private collection



TIM BURTON American, born 1958
Untitled (The World of Stainboy), 2000
 Watercolor wash and pen and ink on paper
 9 x 12" (22.9 x 30.5 cm)
 Private collection



TIM BURTON American, born 1958
Untitled (The World of Stainboy), 2000
 Pen and ink, watercolor wash and colored pencil on paper
 9 x 12" (22.9 x 30.5 cm)
 Private collection



TIM BURTON American, born 1958
Untitled (The World of Stainboy), 2000
 Pen and ink, watercolor wash and colored pencil on paper
 5 x 7" (12.7 x 17.8 cm)
 Private collection



TIM BURTON American, born 1958
Untitled (The World of Stainboy), 2000
 Pen and ink, watercolor wash and colored pencil on paper
 9 x 12" (22.9 x 30.5 cm)
 Private collection



TIM BURTON American, born 1958
Untitled (The World of Stainboy), 2000
 Pencil on paper
 4 x 6" (10.2 x 15.2 cm)
 Private collection



TIM BURTON American, born 1958
Untitled (The World of Stainboy), 2000
 Watercolor wash and pen and ink on paper
 6 x 6" (15.2 x 15.2 cm)
 Private collection



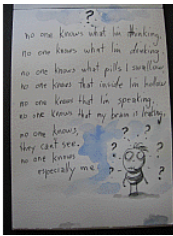
TIM BURTON American, born 1958
Untitled (The World of Stainboy), 2000
 Watercolor wash and pen and ink on paper
 6 x 6" (15.2 x 15.2 cm)
 Private collection



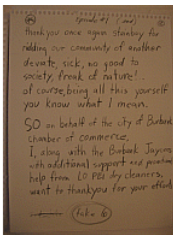
JOHN PUGLISI Italian-American, born 1969
Medical Lab - Mobile - Sheet 13, 2000
Planet of the Apes
 Pencil on paper
 14 x 8 1/2" (35.6 x 21.6 cm)
 On loan from the Twentieth Century Fox Archives



TIM BURTON American, born 1958
A Full Bottle. . ., 2000-2005
 Pen and ink and watercolor on paper
 7 x 5" (17.8 x 12.7 cm)
 Private collection



TIM BURTON American, born 1958
No one knows..., c. 2000-2005
 Sketchbook
 7 x 5" (17.8 x 12.7 cm)
 Private collection



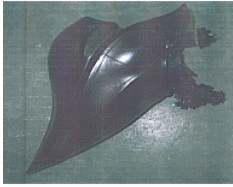
TIM BURTON American, born 1958
The World of Stainboy, c. 2000
 Pencil on paper
 10 x 8" (25.4 x 20.3 cm)
 Private collection



TIM BURTON American, born 1958
Untitled (The World of Stainboy), c. 2000
 Pencil on paper
 8 x 10" (20.3 x 25.4 cm)
 Private collection



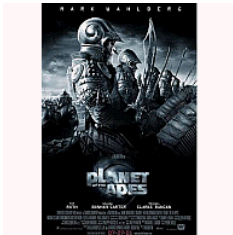
Helmet (Planet of the Apes), 2001
 Plastic
 15 x 15 x 15" (38.1 x 38.1 x 38.1 cm)
 Private collection



COLLEEN ATWOOD American
Helmet (Planet of the Apes), 2001
 Plastic
 20 X 15 X 15"
 Private collection



Planet of the Apes scarecrow head, 2001
 Wood, plastic, metal and papier mache
 42 x 30 x 40", 60 lb. (106.7 x 76.2 x 101.6 cm, 27.2 kg)
 Collection of Ron, Naomi, and Harrison Magid, and Jeff Spielberg



UNKNOWN ARTIST
Planet of the Apes, 2001
 Poster
 40 x 27" (101.6 x 68.6 cm)
 The Museum of Modern Art, New York



COLLEEN ATWOOD American
 Sketch: FELIPE SANCHEZ American
Big Fish caveman costume sketch, 2002
 Tempera paint on paper
 17 x 11" (43.2 x 27.9 cm) mount: black
 Colleen Atwood



COLLEEN ATWOOD American
 Sketch: FELIPE SANCHEZ American
Big Fish Ewan McGregor body cast costume sketch, 2002
 Pencil on paper
 11 x 17" (27.9 x 43.2 cm)
 Colleen Atwood



COLLEEN ATWOOD American
 Sketch: FELIPE SANCHEZ American
Big Fish Mr. Soggy Bottom costume sketch, 2002
 Tempera paint on paper
 11 x 8 1/2" (27.9 x 21.6 cm)
 mount: black
 Colleen Atwood



COLLEEN ATWOOD American
 Sketch: FELIPE SANCHEZ American
Big Fish Ping and Jing costume sketch, 2002
 Tempera paint on paper
 17 x 11" (43.2 x 27.9 cm) mount: black
 Colleen Atwood



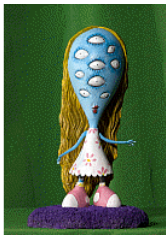
TIM BURTON American, born 1958
Untitled (The Melancholy Death of Oyster Boy and Other Stories Drawing - Toxic Boy), 2002
 Ink and watercolor on paper
 12 x 9" (30.5 x 22.9 cm)
 Private collection



GENTLE GIANT
Boy with Nails in Eyes, 2002
 Ink, watercolor, marker, colored pencil, and silver ink on paper
 9 x 5 x 6" (22.9 x 12.7 x 15.2 cm)
 Gentle Giant



GENTLE GIANT
Charred Girl, 2002
 Two-part resin casting from clay original
 11 x 6 x 4" (27.9 x 15.2 x 10.2 cm)
 Gentle Giant



GENTLE GIANT
Girl with Many Eyes, 2002
 Two-part resin casting from clay original
 10 x 6 x 5 1/2" (25.4 x 15.2 x 14 cm)
 Gentle Giant



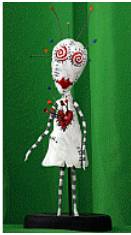
GENTLE GIANT
Jimmy Penguin, 2002
 Two-part resin casting from clay original
 6 1/2 x 7 x 6" (16.5 x 17.8 x 15.2 cm)
 Gentle Giant



GENTLE GIANT
Mummy Boy, 2002
 Two-part resin casting from clay original
 7 1/2 x 5 1/2 x 4 1/2" (19.1 x 14 x 11.4 cm)
 Gentle Giant



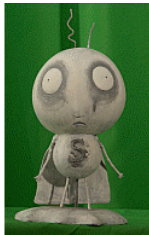
GENTLE GIANT
Oyster Boy, 2002
 Two-part resin casting from clay original
 11 x 9 x 6" (27.9 x 22.9 x 15.2 cm)
 Gentle Giant



GENTLE GIANT
Pin Cushion Queen, 2002
 Two-part resin casting from clay original
 12 x 4 1/2 x 4 1/2" (30.5 x 11.4 x 11.4 cm)
 Gentle Giant



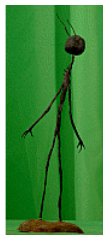
GENTLE GIANT
Robot Boy, 2002
 Two-part resin casting from clay original
 8 x 6 1/2 x 4 1/2" (20.3 x 16.5 x 11.4 cm)
 Gentle Giant



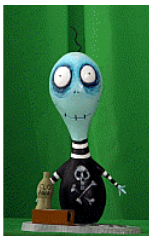
GENTLE GIANT
Stain Boy, 2002
 Two-part resin casting from clay original
 9 x 5 x 5" (22.9 x 12.7 x 12.7 cm)
 Gentle Giant



GENTLE GIANT
Staring Girl, 2002
 Two-part resin casting from clay original
 8 x 6 x 5" (20.3 x 15.2 x 12.7 cm)
 Gentle Giant



GENTLE GIANT
Stick Boy, 2002
 Two-part resin casting from clay original
 11 x 3 x 3", 1 lb. (27.9 x 7.6 x 7.6 cm, 0.5 kg)
 Gentle Giant



GENTLE GIANT
Toxic Boy, 2002
 Two-part resin casting from clay original
 10 x 5 1/2 x 5 1/2" (25.4 x 14 x 14 cm)
 Gentle Giant



MANUFACTURER: BLT AND ASSOCIATES
Big Fish, 2003
 Poster
 29 x 20" (73.7 x 50.8 cm)
 The Museum of Modern Art, New York



MANUFACTURER: BLT AND ASSOCIATES
Big Fish, 2003
 Poster
 39 3/4 x 26 3/4" (101 x 67.9 cm)
 The Museum of Modern Art, New York



MANUFACTURER: BLT AND ASSOCIATES
Big Fish lobby card, 2003
 Lobby card
 8 1/4 x 10 13/16" (21 x 27.5 cm)
 The Museum of Modern Art, New York



MANUFACTURER: BLT AND ASSOCIATES
Big Fish lobby card, 2003
 Lobby card
 8 1/4 x 10 13/16" (21 x 27.5 cm)
 The Museum of Modern Art, New York



TIM BURTON American, born 1958
Untitled (Big Fish), 2003
 Pencil on paper
 8 x 12" (20.3 x 30.5 cm)
 Private collection



TIM BURTON American, born 1958
Untitled (Big Fish), 2003
 Pen and ink on paper
 6 x 4" (15.2 x 10.2 cm)
 Private collection



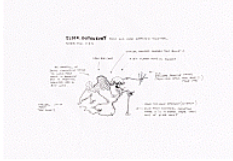
TIM BURTON American, born 1958
Untitled (Big Fish), 2003
 Pen and ink and watercolor on paper
 11 1/8 x 9 3/4" (28.3 x 24.8 cm)
 Private collection



TIM BURTON American, born 1958
Untitled (Big Fish), 2003
 Pen and ink and watercolor wash on paper
 12 1/4 x 9" (31.1 x 22.9 cm)
 Private collection



Drawings and Inking: CARLOS GRANGEL Spanish, born 1963
 Drawings and Inking: JORDI GRANGEL Spanish, born 1968
 Titles and Calligraphy: CARLES BURGÈS MAÑES Spanish, born 1941
Corpse Bride characters line-up, 2003
 Black indian ink and fine point black marker on top of rose mallow color cardboard on paper
 11 1/8 x 47 1/8" (28.2 x 119.7 cm)
 Grangel Studio, Barcelona, Copyright Warner Bros.



CARLOS GRANGEL Spanish, born 1963
 JORDI GRANGEL Spanish, born 1968
Corpse Bride design of Elder Gutknecht with notes addressed to sculptors, 2003
 Black fine point marker on top of animation paper
 11 x 17" (27.9 x 43.2 cm)
 Grangel Studio, Barcelona, Copyright Warner Bros.



CARLOS GRANGEL Spanish, born 1963
Corpse Bride design studies for the Land of the Living characters, 2003
 Black brush marker on top of animation paper
 11 x 17" (27.9 x 43.2 cm)
 Grangel Studio, Barcelona, Copyright Warner Bros.



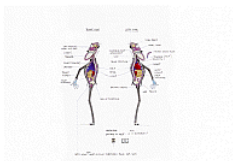
CARLOS GRANGEL Spanish, born 1963
Corpse Bride Napo and Welling, 2003
 Orange pencil and black ink on breakfast cereal cardboard box (interior)
 11 x 17" (27.9 x 43.2 cm)
 Grangel Studio, Barcelona, Copyright Warner Bros.



Drawings: CARLOS GRANGEL Spanish, born 1963
 Title: CARLES BURGÈS MAÑES Spanish, born 1941
Corpse Bride Skeleton Band suggestions, 2003
 Black fine point marker on top of animation paper
 11 x 17" (27.9 x 43.2 cm)
 Grangel Studio, Barcelona, Copyright Warner Bros.



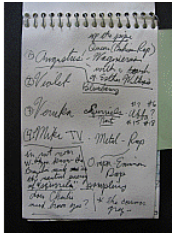
TIM BURTON American, born 1958
Sketchbook, 2004
 Sketchbook
 7 x 5" (17.8 x 12.7 cm)
 Private collection



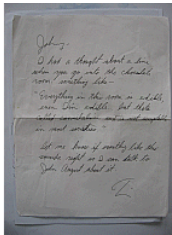
CARLOS GRANGEL Spanish, born 1963
Corpse Bride Half and Half, 2004
 Black fine point marker, colored pencil and marker on top of white paper
 17 x 11" (43.2 x 27.9 cm)
 Grangel Studio, Barcelona, Copyright Warner Bros.



MANUFACTURER: BLT AND ASSOCIATES
Corpse Bride, 2005
 Poster
 40 x 27" (101.6 x 68.6 cm)
 The Museum of Modern Art, New York



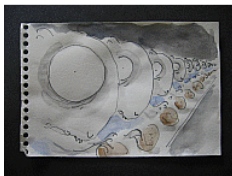
TIM BURTON American, born 1958
Charlie and the Chocolate Factory notes, 2005
 Sketchbook
 6 x 4" (15.2 x 10.2 cm)
 Private collection



TIM BURTON American, born 1958
Letter to Johnny Depp, 2005
 Ink on paper
 8 x 10" (20.3 x 25.4 cm)
 Private collection



TIM BURTON American, born 1958
Untitled (Charlie and the Chocolate Factory - Augustus Gloop Going Up the Tube), 2005
 Pen and ink and watercolor on paper
 4 x 6" (10.2 x 15.2 cm)
 Private collection



TIM BURTON American, born 1958
Untitled (Charlie and the Chocolate Factory - Squirrel Assembly Line Drawing), 2005
 Pen and ink and watercolor on paper
 4 x 6" (10.2 x 15.2 cm)
 Private collection



TIM BURTON American, born 1958
Untitled (Charlie and the Chocolate Factory drawing), 2005
 Pen and ink and watercolor wash on paper
 14 x 11" (35.6 x 27.9 cm)
 Private collection



TIM BURTON American, born 1958
Untitled (Charlie and the Chocolate Factory), 2005
 Pen and ink and watercolor on paper
 4 x 6" (10.2 x 15.2 cm)
 Private collection



TIM BURTON American, born 1958
Untitled (Charlie and the Chocolate Factory), 2005
 Pen and ink and watercolor wash on paper
 9 x 12" (22.9 x 30.5 cm)
 Private collection



TIM BURTON American, born 1958
Untitled (Charlie and the Chocolate Factory), 2005
 Pen and ink and watercolor wash on paper
 6 x 4" (15.2 x 10.2 cm)
 Private collection



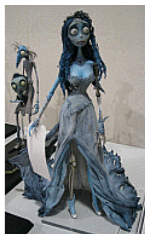
TIM BURTON American, born 1958
Untitled (Charlie and the Chocolate Factory), 2005
 Pen and ink and watercolor wash on paper
 6 1/2 x 4 1/2" (16.5 x 11.4 cm)
 Private collection



TIM BURTON American, born 1958
Untitled (Charlie and the Chocolate Factory), 2005
 Ink and marker on paper
 Approx.: 7 x 5" (17.8 x 12.7 cm)
 Private collection



TIM BURTON American, born 1958
Untitled (Charlie and the Chocolate Factory), 2005
 Ink and watercolor wash on paper
 6 x 4" (15.2 x 10.2 cm)
 Private collection



MACKINNON & SAUNDERS
Corpse Bride (Emily) puppet, 2005
 Metal, cloth, resin, foam latex and silicone
 15 x 15 x 12" (38.1 x 38.1 x 30.5 cm)
 Courtesy of Warner Bros. Entertainment Inc.



MACKINNON & SAUNDERS
Elder Gutznecht puppet, 2005
 Metal, resin and silicone
 With base: 10 3/16 x 7 x 7" (25.9 x 17.8 x 17.8 cm)
 Courtesy of Mackinnon & Saunders, Manchester, UK



MACKINNON & SAUNDERS
Finis Everglot puppet, 2005
 Metal, cloth, resin, foam latex and silicone
 12 x 9 1/2" (30.5 x 24.1 cm)
 Courtesy of Warner Bros. Entertainment Inc.



MACKINNON & SAUNDERS
General Bonesapart puppet, 2005
 Metal, cloth, resin, foam latex and silicone
 8 1/2" wide on side- leans back, 7" across front w/ base, 16 1/2" tall
 Courtesy of Warner Bros. Entertainment Inc.



MACKINNON & SAUNDERS
General Welling with Cannonball hole puppet, 2005
 Metal, cloth, resin, foam latex and silicone
 22" tall w/ base, 7 x 7" wide at base
 Courtesy of Warner Bros. Entertainment Inc.



MACKINNON & SAUNDERS
Half and Half puppet, 2005
 Metal, resin, cloth and silicone
 He stands 17" tall and is 6" wide from hand to hand.
 Courtesy of Warner Bros. Entertainment Inc.



MACKINNON & SAUNDERS
Maudeline Everglot puppet, 2005
 Metal, cloth, resin, foam latex and silicone
 15" wide w/ train, 23" tall, 8 1/2" wide
 Courtesy of Warner Bros. Entertainment Inc.



MACKINNON & SAUNDERS
Pastor Galswell puppet, 2005
 Metal, cloth, resin, foam latex and silicone
 15 1/2" wide w/ train and staff, 19 1/2" tall w/ base, 10 1/2" wide w/staff
 Courtesy of Warner Bros. Entertainment Inc.



MACKINNON & SAUNDERS
Paul the Head Waiter, 2005
 Metal, resin and silicone
 12 x 10 x 10" (30.5 x 25.4 x 25.4 cm)
 Courtesy of Warner Bros. Entertainment Inc.



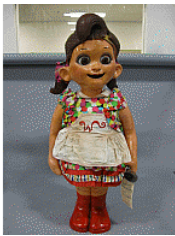
MACKINNON & SAUNDERS
Victor Van Dort puppet, 2005
 Metal, cloth, resin, foam latex and silicone
 18 x 4 1/2 x 4" (45.7 x 11.4 x 10.2 cm)
 Courtesy of Warner Bros. Entertainment Inc.



NEAL SCANLAN STUDIO
Charlie and the Chocolate Factory animatronic, 2005
 Rubber, cotton, foam, plastic and metal
 31 x 13 x 9" (78.7 x 33 x 22.9 cm)
 Courtesy of Warner Bros. Entertainment Inc.



NEAL SCANLAN STUDIO
Charlie and the Chocolate Factory animatronic, 2005
 Rubber, cotton, foam, plastic and metal
 36 x 14 x 10" (91.4 x 35.6 x 25.4 cm)
 Courtesy of Warner Bros. Entertainment Inc.



NEAL SCANLAN STUDIO
Charlie and the Chocolate Factory animatronic, 2005
 Rubber, cotton, foam, plastic and metal
 31 x 12 x 13" (78.7 x 30.5 x 33 cm)
 Courtesy of Warner Bros. Entertainment Inc.



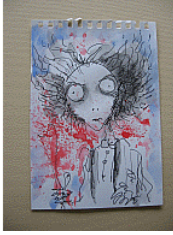
NEAL SCANLAN STUDIO
Charlie and the Chocolate Factory animatronic, 2005
 Rubber, cotton, foam, plastic and metal
 30 x 12 x 7" (76.2 x 30.5 x 17.8 cm)
 Courtesy of Warner Bros. Entertainment Inc.



Willy Wonka headgear and braces, 2005
 Metal
 12 x 11 x 10 1/2" (30.5 x 27.9 x 26.7 cm)
 Courtesy of Warner Bros. Entertainment Inc.



UNKNOWN ARTIST
Charlie and the Chocolate Factory, 2005
 Poster
 40 x 27" (101.6 x 68.6 cm)
 The Museum of Modern Art, New York



TIM BURTON American, born 1958
Untitled (Sweeney Todd), 2006
 Ink and watercolor on paper
 6 1/4 x 4 1/2" (15.9 x 11.4 cm)
 Private collection



TIM BURTON American, born 1958
Untitled, 2006-2007
 Pen and ink and watercolor on paper
 12 x 9" (30.5 x 22.9 cm)
 Private collection



COLLEEN ATWOOD American
 Sketch by WARREN HOLDER British
Sweeney Todd costume test, 2007
 Tempera paint on paper
 11 5/8 x 8 5/8" (29.5 x 21.9 cm)
 Colleen Atwood



COLLEEN ATWOOD American
 Sketch by WARREN HOLDER British
Sweeney Todd costume test, 2007
 Tempera paint on paper
 11 5/8 x 8 5/8" (29.5 x 21.9 cm)
 Colleen Atwood



COLLEEN ATWOOD American
 Sketch by WARREN HOLDER British
Sweeney Todd costume test, 2007
 Tempera paint on paper
 11 5/8 x 8 5/8" (29.5 x 21.9 cm)
 Colleen Atwood



COLLEEN ATWOOD American
 Sketch by WARREN HOLDER British
Sweeney Todd Mrs. Lovett skeleton costume test, 2007
 Pencil on paper
 11 5/8 x 8 3/8" (29.5 x 21.3 cm)
 Colleen Atwood



COLLEEN ATWOOD American
 Sketch by WARREN HOLDER British
Sweeney Todd Mrs. Lovett skeleton costume test, 2007
 Pencil on paper
 11 5/8 x 8 3/8" (29.5 x 21.3 cm)
 Colleen Atwood



COLLEEN ATWOOD American
Sketch by WARREN HOLDER British
Sweeney Todd Mrs. Lovett skeleton costume test, 2007
Pencil on paper
11 5/8 x 8 3/8" (29.5 x 21.3 cm)
Colleen Atwood



DAVID BALFOUR Scottish, born 1958
Sweeney Todd razors and case, 2007
Razors/Box are metal, wood and leather
Exterior box dimensions are 10" x 5" x 3".
Courtesy of Warner Bros. Entertainment Inc.



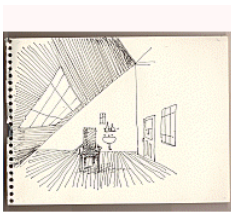
MANUFACTURER: BLT AND ASSOCIATES
Sweeney Todd, 2007
Poster
40 x 27" (101.6 x 68.6 cm)
The Museum of Modern Art, New York



TIM BURTON American, born 1958
Untitled (Sweeney Todd), 2007
Ink on paper
3 1/2 x 3 1/2" (8.9 x 8.9 cm)
Private collection



TIM BURTON American, born 1958
Untitled (Sweeney Todd), 2007
Ink on cocktail napkin
4 1/2 x 4 1/2" (11.4 x 11.4 cm)
Private collection



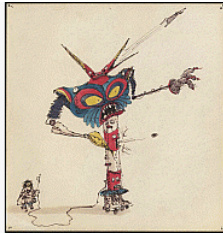
TIM BURTON American, born 1958
Untitled (Sweeney Todd), 2007
Ink on paper
~ 6 X 8"
Private collection



TIM BURTON American, born 1958
Stitched Boy, 2008
Oil and acrylic on canvas
4 x 3" (10.2 x 7.6 cm)
Private collection



Digital slideshow of Tim Burton art with reference to Polaroid photography, 2009
Digital slideshow, silent
Private collection



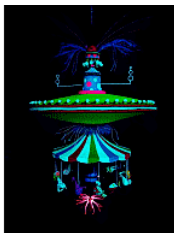
Digital slideshow of Tim Burton art, 1980s-2000s, 2009
Digital video, silent
Private collection



Selections from CalArts sketchbooks c. 1977-1979, 2009
Digital slideshow, silent
19" monitor
Private collection



TIM BURTON American, born 1958
Balloon Boy, 2009
Vinyl-coated nylon and electric motor
264 x 96 x 96", 45 lb. (670.6 x 243.8 x 243.8 cm, 20.4 kg)
Tim Burton, private collection



TIM BURTON American, born 1958
Carousel, 2009
Epoxy, polyester resin, plasma ball, muslin, fiberglass, electric motor, rigid foam, styrofoam, fluorescent paint, and plastic filagree
72 x 48 x 48", 30 lb. (182.9 x 121.9 x 121.9 cm, 13.6 kg)
Tim Burton, private collection



TIM BURTON American, born 1958
Robot Boy, 2009
Steel, cast aluminum, LEDs, Arduino programmers, blown glass, copper wire, rubber, electric motor, and paint
68 x 36 x 30", 75 lb. (172.7 x 91.4 x 76.2 cm, 34 kg)
Tim Burton, private collection



TIM BURTON American, born 1958
Stain Boy Diorama, 2009
Wood, paint, color blast 12 fleenor, 6-way power supply, urethane resin, acrylic carpet, tar roofing, Christmas lights, Christmas decorative balls, wire-wrapped mylar, steel, and plexi-glass
Diorama: 40 x 44 x 28 1/4" (101.6 x 111.8 x 71.8 cm)
Base: 16 x 44 x 29" (40.6 x 111.8 x 73.7 cm)
Tim Burton, private collection

TIM BURTON American, born 1958
Three Creatures (Creature #1), 2009
Steel, burlap, epoxy, polyester resin, paint, and rigid foam
94 x 48 x 48", 80 lb. (238.8 x 121.9 x 121.9 cm, 36.3 kg)
Tim Burton, private collection

TIM BURTON American, born 1958
Three Creatures (Creature #2), 2009
 Steel, burlap, epoxy, polyester resin, paint, and rigid foam
 84 x 48 x 37", 80 lb. (213.4 x 121.9 x 94 cm, 36.3 kg)
 Tim Burton, private collection

TIM BURTON American, born 1958
Three Creatures (Creature #3), 2009
 Steel, burlap, epoxy, polyester resin, paint, and rigid foam
 34 x 39 x 21", 40 lb. (86.4 x 99.1 x 53.3 cm, 18.1 kg)
 Tim Burton, private collection



TIM BURTON American, born 1958
 Produced by MACKINNON & SAUNDERS
 Music by DANNY ELFMAN American, born 1953
Tim Burton MoMA Spot, 2009
 Digital video (color, sound). 30 sec.
 Private collection



TIM BURTON American, born 1958
Untitled (Alice in Wonderland), 2009
 Pen and ink on sketchbook
 6 x 4" (15.2 x 10.2 cm)
 Private collection



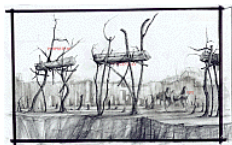
TIM BURTON American, born 1958
Untitled (Alice in Wonderland), 2009
 Pen and ink, colored pencil and pencil on paper
 5 x 8" (12.7 x 20.3 cm)
 Private collection



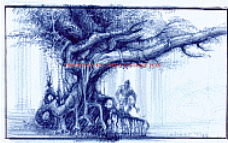
Replica constructed by KAREN ATTA STUDIO
Replica of Deer Topiary in Edward Scissorhands, 2009
 Mixed mediums
 139 x 101 x 60" (353.1 x 256.5 x 152.4 cm)



BILL BOES American, born 1963
Effigy with 4 mummies hanging, man underneath, n.d.
Planet of the Apes
 Black pencil on paper
 14 x 17" (35.6 x 43.2 cm)
 On loan from the Twentieth Century Fox Archives



MAURO BORRELLI American, born 1961
Cemetery - View from cliff/3 coffins/two men with body, n.d.
Planet of the Apes
 Black pencil on paper
 11 x 17" (27.9 x 43.2 cm)
 On loan from the Twentieth Century Fox Archives



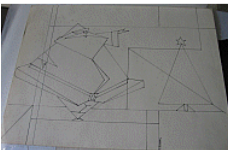
MAURO BORRELLI American, born 1961
Jungle - Elephant Tree with Vague Pod Placement, n.d.
Planet of the Apes
 Indigo pencil on paper
 11 x 17" (27.9 x 43.2 cm) framed with 2009.1308
 On loan from the Twentieth Century Fox Archives



MAURO BORRELLI American, born 1961
Jungle - Xmas Tree, n.d.
Planet of the Apes
 Indigo pencil on paper
 11 x 17" (27.9 x 43.2 cm) framed with 2009.1307
 On loan from the Twentieth Century Fox Archives



TIM BURTON American, born 1958
Untitled (Creature Series), n.d.
 Pencil Sketch on paper
 12 x 9" (30.5 x 22.9 cm)
 Private collection



TIM BURTON American, born 1958
Untitled (Geometric Santa and tree), n.d.
 Pen and ink on paper
 8 1/2 x 11" (21.6 x 27.9 cm)
 Private collection